

THE COSENZA II | Exterior Designs



THE COSENZA II

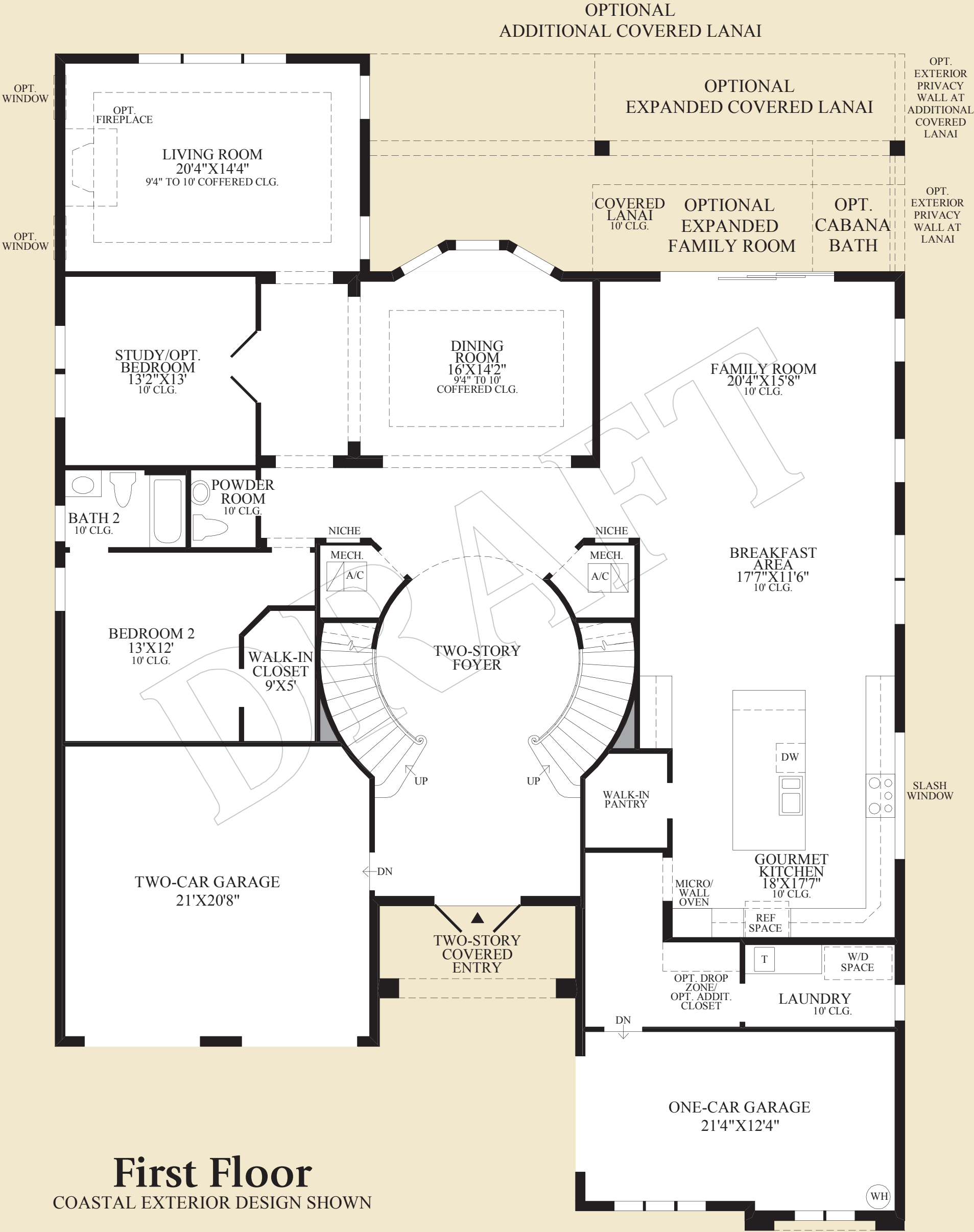
DRAFT



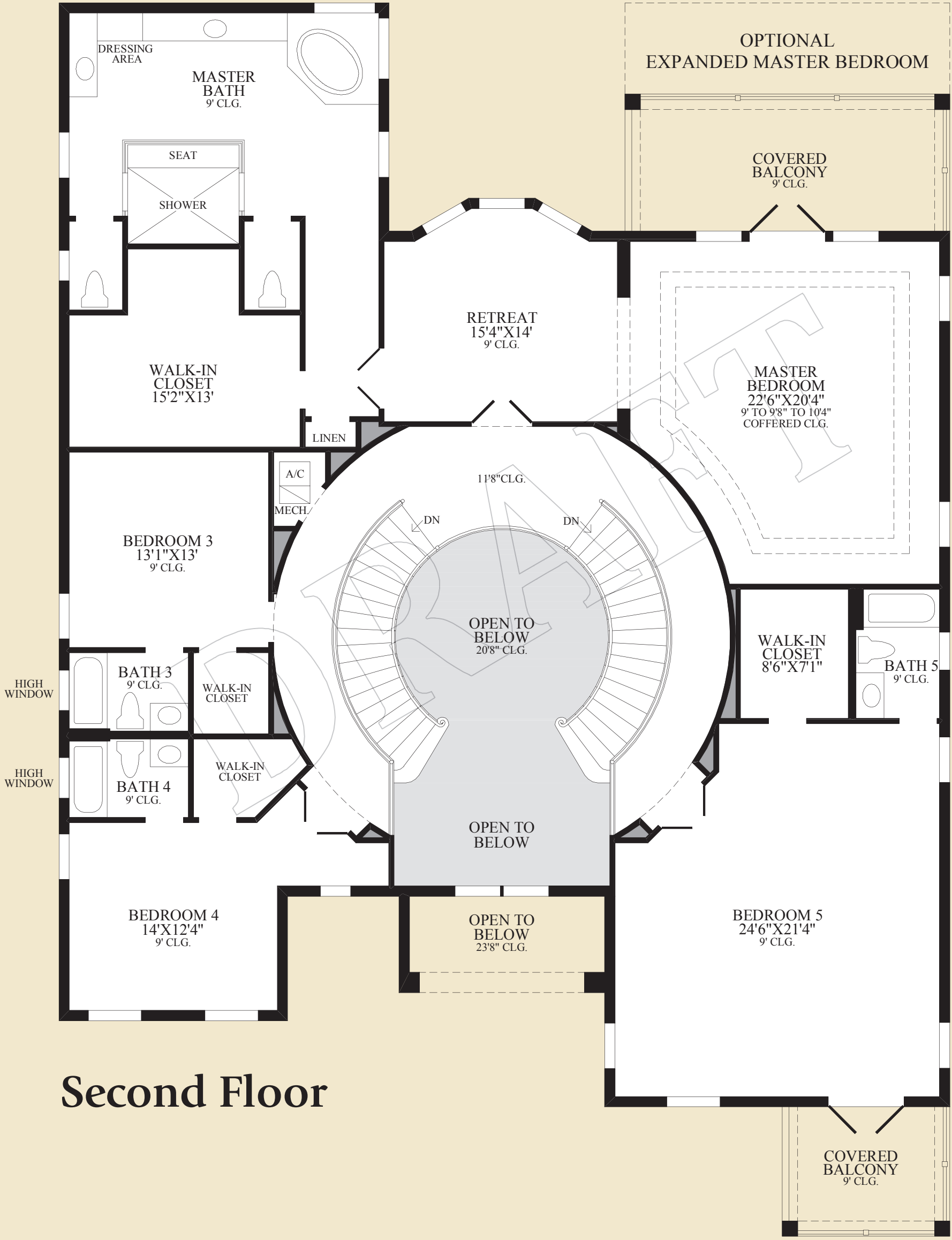
*Toll Brothers*  
AMERICA'S LUXURY HOME BUILDER®







First Floor  
COASTAL EXTERIOR DESIGN SHOWN



Second Floor

THE COSENZA II HIGHLIGHTS

- The stunning two-story foyer boasts an elegantly curved dual staircase that leads to a formal dining room through beautifully-columned archways.
- The expansive gourmet kitchen includes a walk-in pantry, large center island, and an attached breakfast area, which are all open to the family room and feature stunning views of the covered lanai, perfect for entertaining.
- The gracious master bedroom suite with spacious retreat leads to the luxurious private bath with dual-sink vanity, dressing area, corner tub, separate shower, and two private water closets.
- Additional features of this home include a private study with french doors, and a space beside the generous laundry room for a bench, closet, or drop zone.

First Floor	2858 sq. ft.
Second Floor	2904 sq. ft.
Air Conditioned Living Area	5762 sq. ft.
Covered Lanai	314 sq. ft.
Covered Entry	86 sq. ft.
Covered Balcony	285 sq. ft.