

Craftsman



THE DAVENPORT | Exterior Designs

Heritage



Traditional



Country Manor



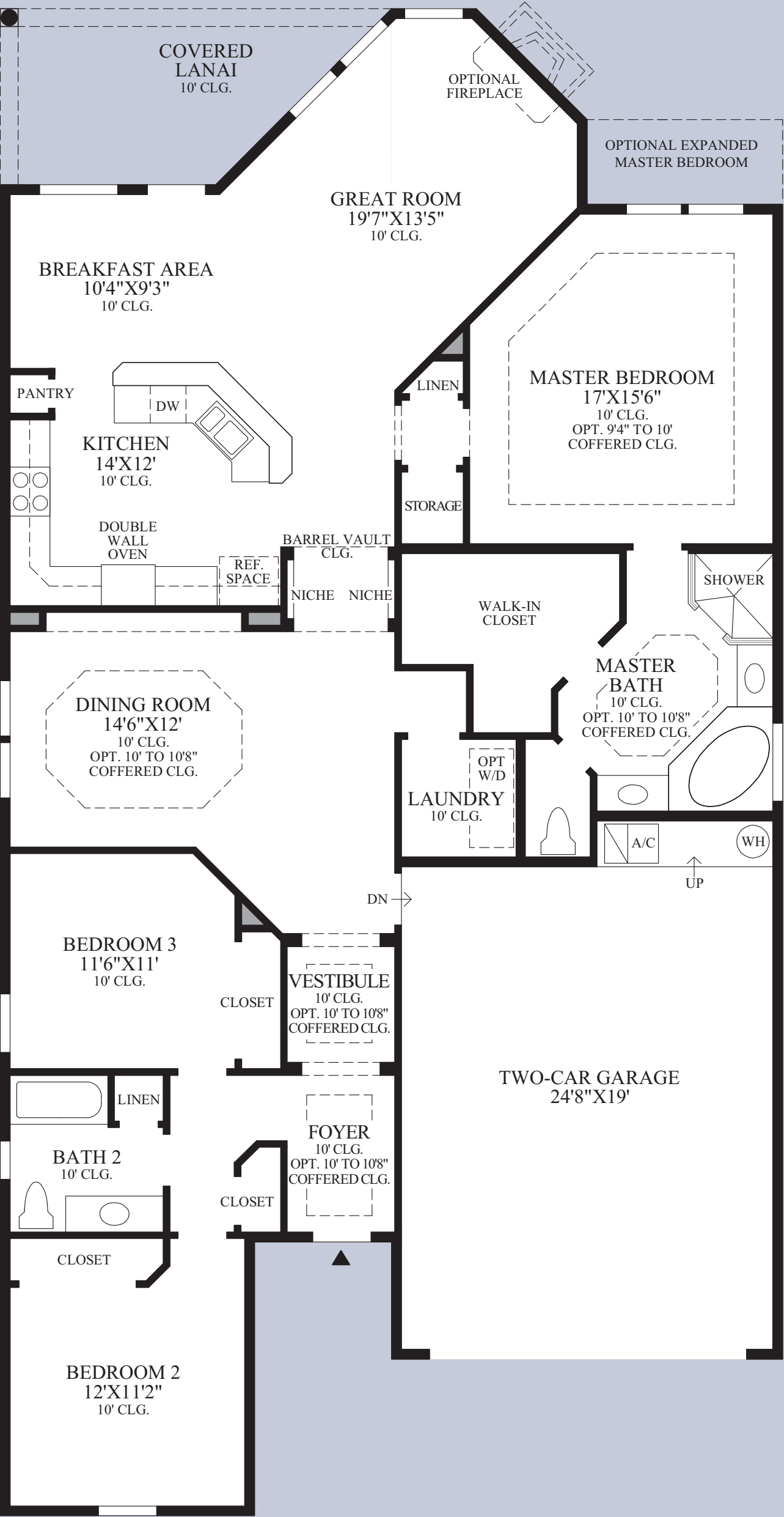
THE DAVENPORT

THE DAVENPORT | Interior



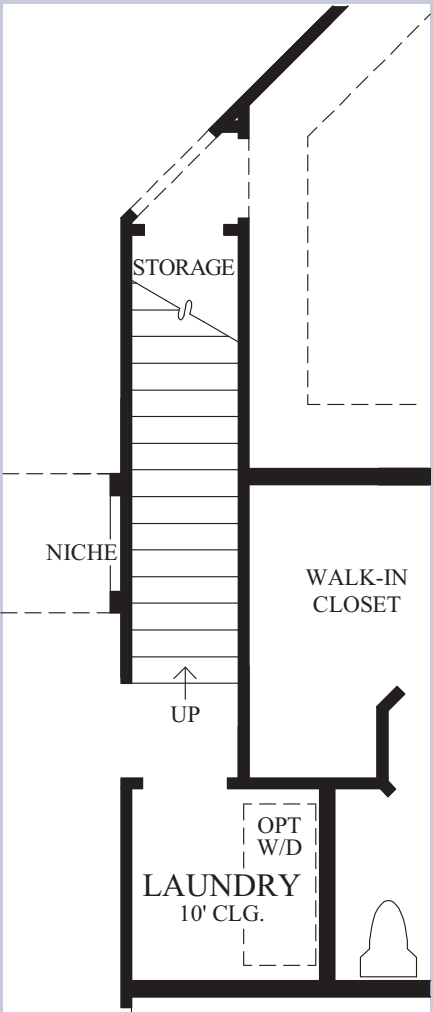
Master Bathroom

Great Room



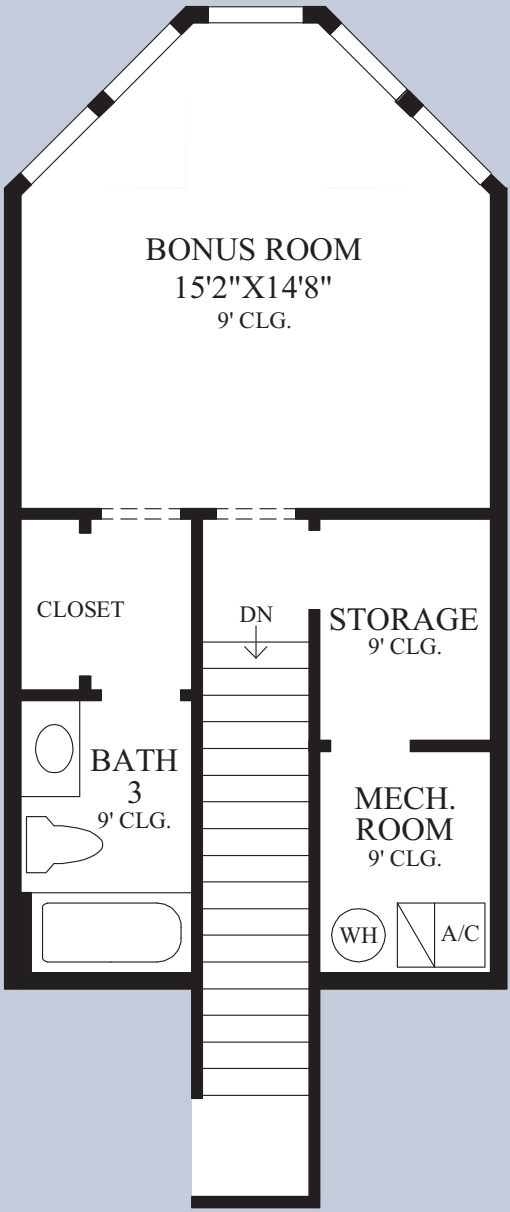
Floor Plan

COUNTRY MANOR ELEVATION SHOWN

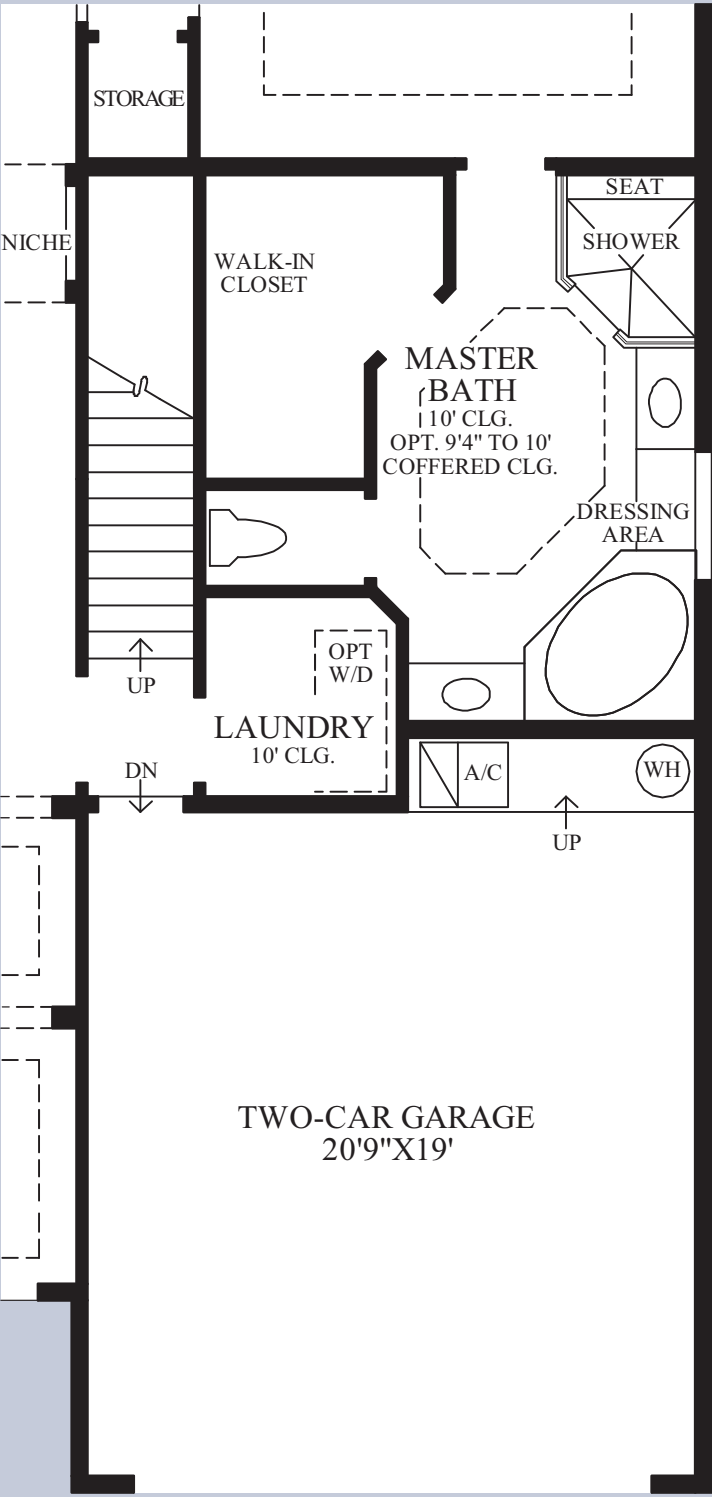


SHOWN WITH STAIRS TO
OPTIONAL BONUS ROOM

NOTE:
THIS OPTION FEATURES AN ADDITIONAL 412 SQ. FT.
OF AIR CONDITIONED LIVING AREA.

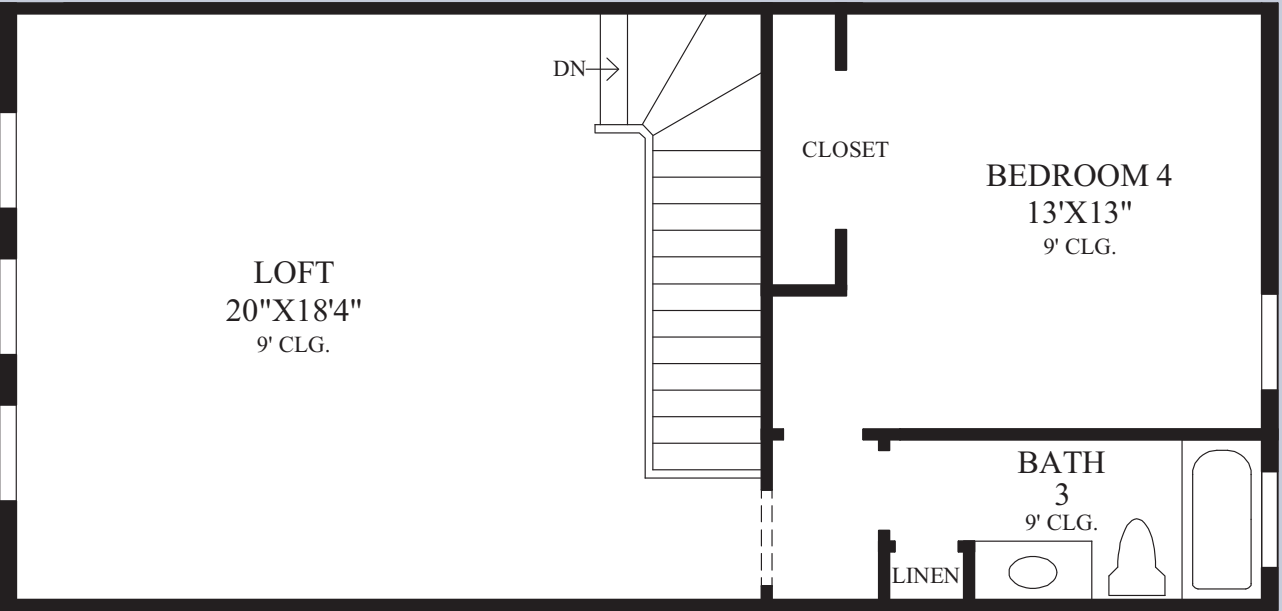


SHOWN WITH OPTIONAL
SECOND FLOOR BONUS ROOM



SHOWN WITH STAIRS TO OPTIONAL
FINISHED LOFT WITH BEDROOM AND BATH

NOTE:
THIS OPTION FEATURES AN ADDITIONAL 694 SQ. FT.
OF AIR CONDITIONED LIVING AREA.



SHOWN WITH OPTIONAL
FINISHED LOFT WITH BEDROOM AND BATH

THE DAVENPORT HIGHLIGHTS

- An expansive covered entry opens to an elegant foyer that leads to a formal dining room.
- The well-designed kitchen boasts a separate pantry and a raised snack bar that overlooks a sunlit breakfast area with direct access to the covered lanai and the large great room.
- The master bedroom suite features a luxurious master bath with a large walk-in closet, his-and-her vanities, a Roman tub, a separate shower and a private water closet.
- This thoughtfully designed home is further enhanced by two additional bedrooms, full bath, a separate laundry room and a two-car garage.
- An optional second floor bonus room may be added to create a guest suite or additional family space.

Air Conditioned Living Area	2050 sq. ft.
Covered Lanai	140 sq. ft.
Garage	516 sq. ft.
Total	2706 sq. ft.



Dining Room with Optional Coffered Ceiling