



Manor

# THE DENTON

THE DENTON | Exterior Designs



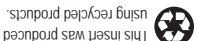
Bristol/Denton/Portman/Bucknell



Dining Room with Optional Tray Ceiling and Fireplace

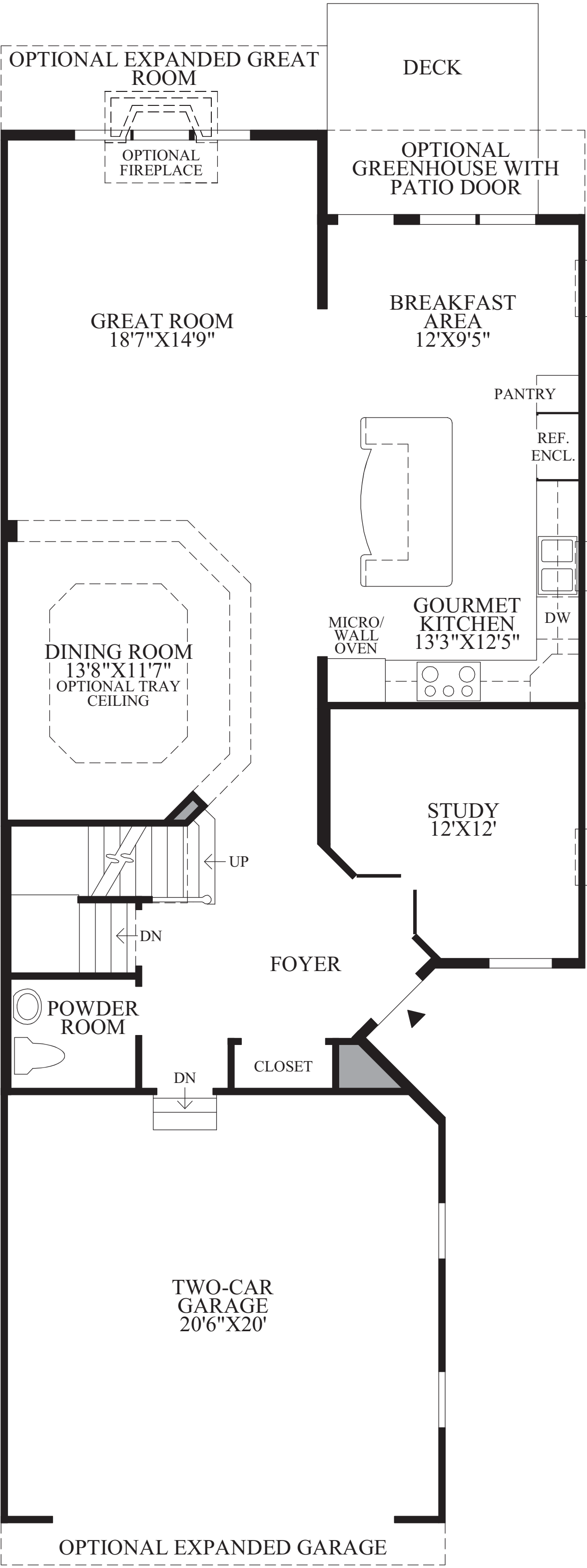
THE DENTON | Interior

Toll Brothers  
AMERICA'S LUXURY HOME BUILDER®



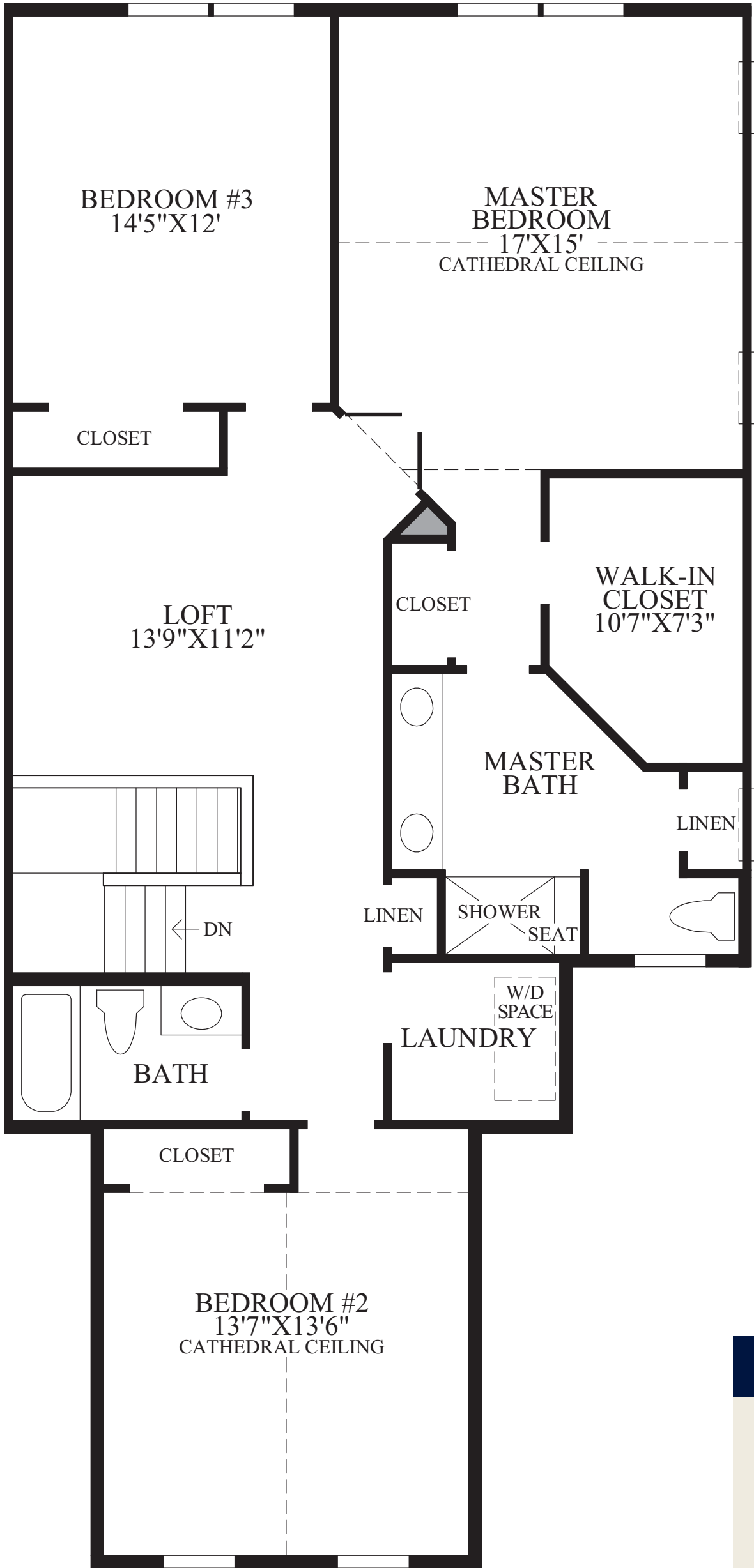
This model was produced using recycled products.





END RESIDENCES INCLUDE SIDE WINDOWS IN LOCATIONS SHOWN.

## First Floor



END RESIDENCES INCLUDE SIDE WINDOWS IN LOCATIONS SHOWN. WITH OPTION 032-ELITE OPTION, THE MASTER BATH LINEN CLOSET IS REMOVED.

## Second Floor

### THE DENTON HIGHLIGHTS

- The foyer with adjacent study leads to the formal dining room and the great room.
- The well-appointed kitchen is highlighted by a large island and an adjacent sunlit breakfast area.
- The master bedroom features a large walk-in closet and a private bath with a shower with a seat, a dual-sink vanity, and a private toilet area.
- Additional features of the second floor of this home include two secondary bedrooms, a hall bath, and a conveniently-located laundry.
- Nine-foot ceilings on the first floor.



Master Bedroom with Optional Box Beam Ceiling and Elite Option