

May be shown with optional features, including but not limited to flagstone front porch.  
Brick to belt (not shown) is included on all brick/stone exterior designs.



Fairview

## THE DUKE | Exterior Designs



Carolina

May be shown with optional features, including but not limited to brick front porch.  
Brick to belt (not shown) is included on all brick/stone exterior designs.

## THE DUKE | Interior



Optional Expanded Family Room with Greenhouse, Second Floor Overlook, and Fireplace with Facing



Aberdeen

May be shown with optional features, including but not limited to flagstone front porch.  
Brick to belt (not shown) is included on all brick/stone exterior designs.



Lexington

May be shown with optional features, including but not limited to brick front porch.  
Brick to belt (not shown) is included on all brick/stone exterior designs.



New England

May be shown with optional features, including but not limited to gothic portico and brick front porch.  
Brick to belt (not shown) is included on all brick/stone exterior designs.



Classic

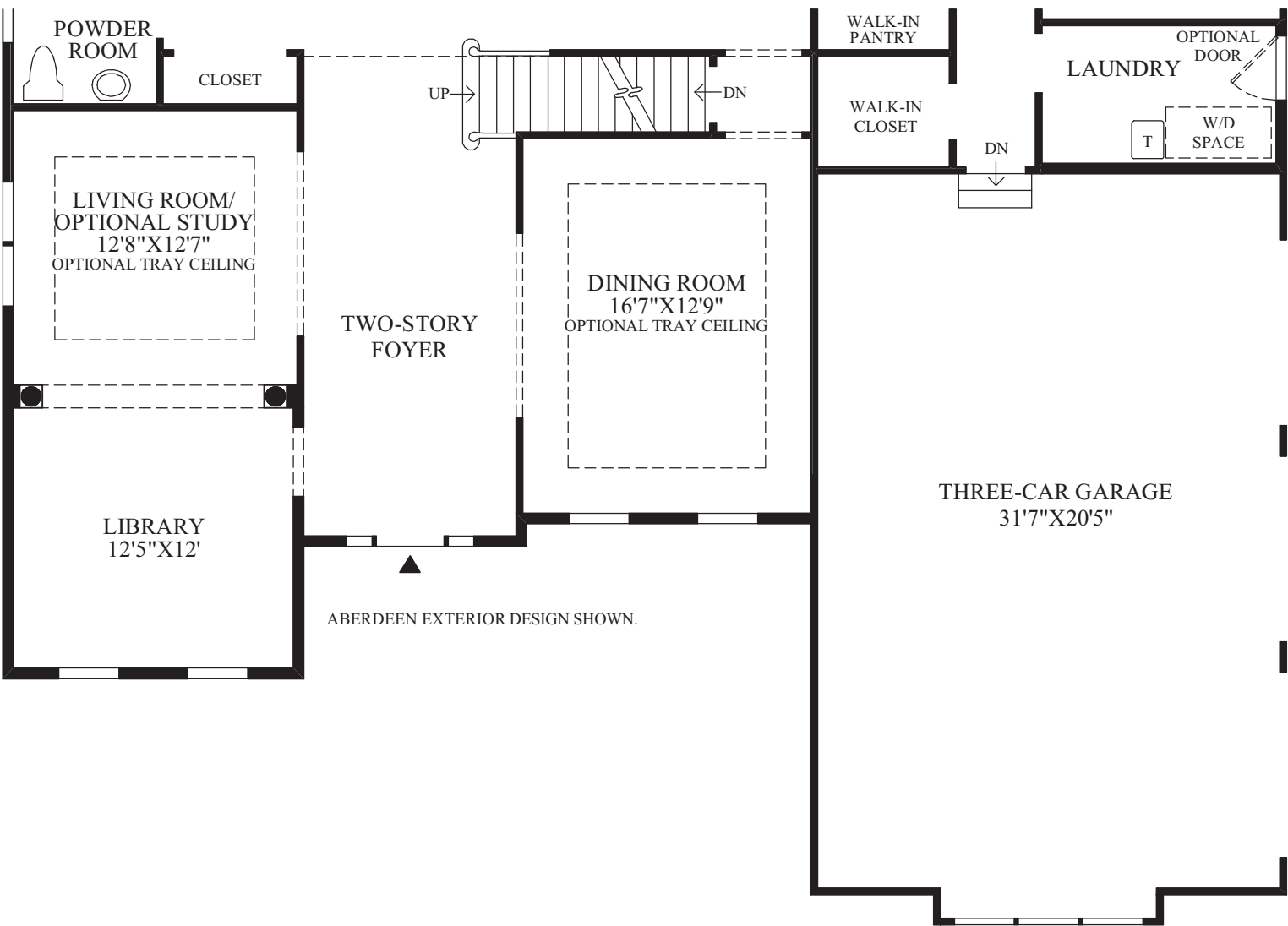
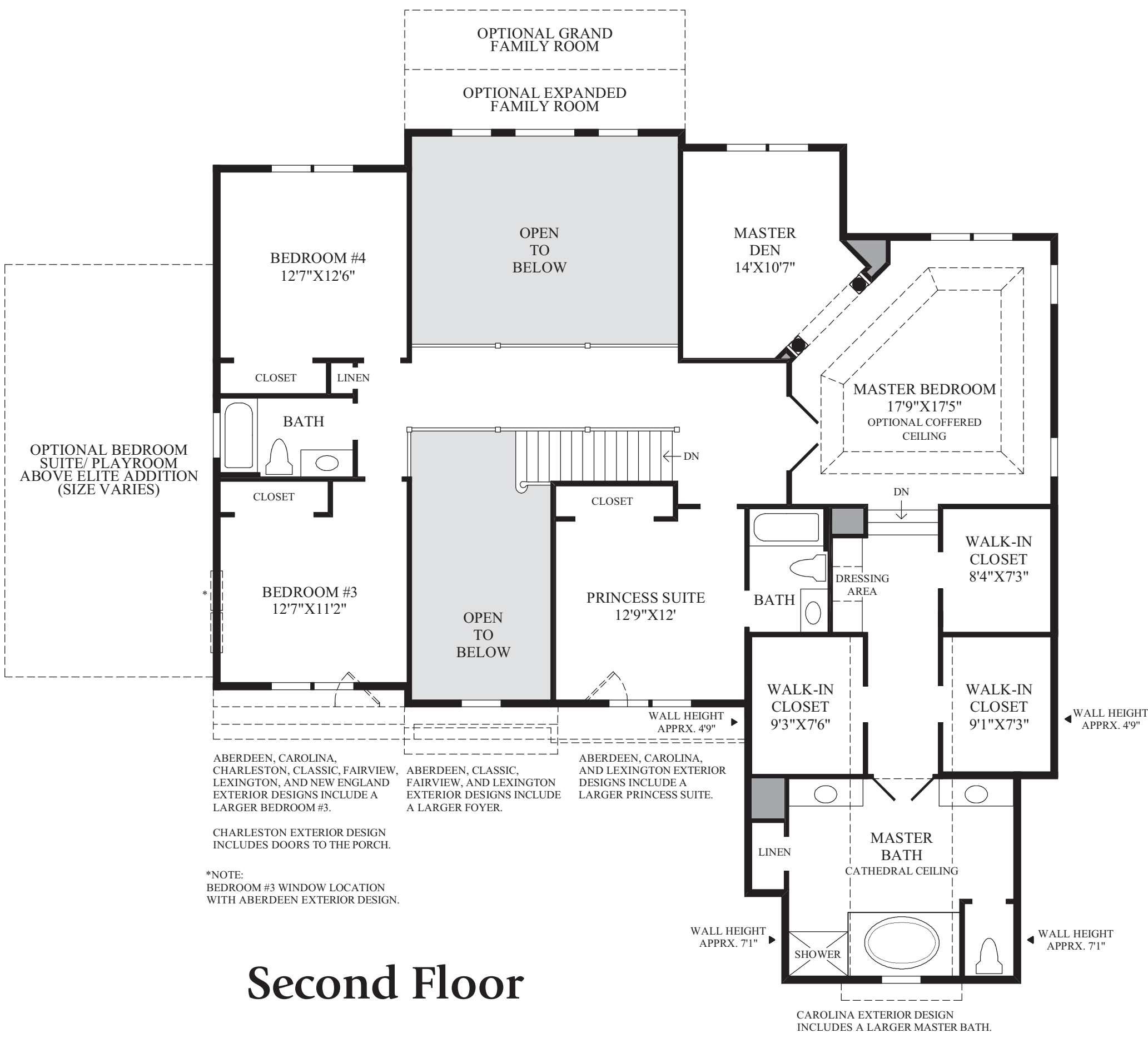
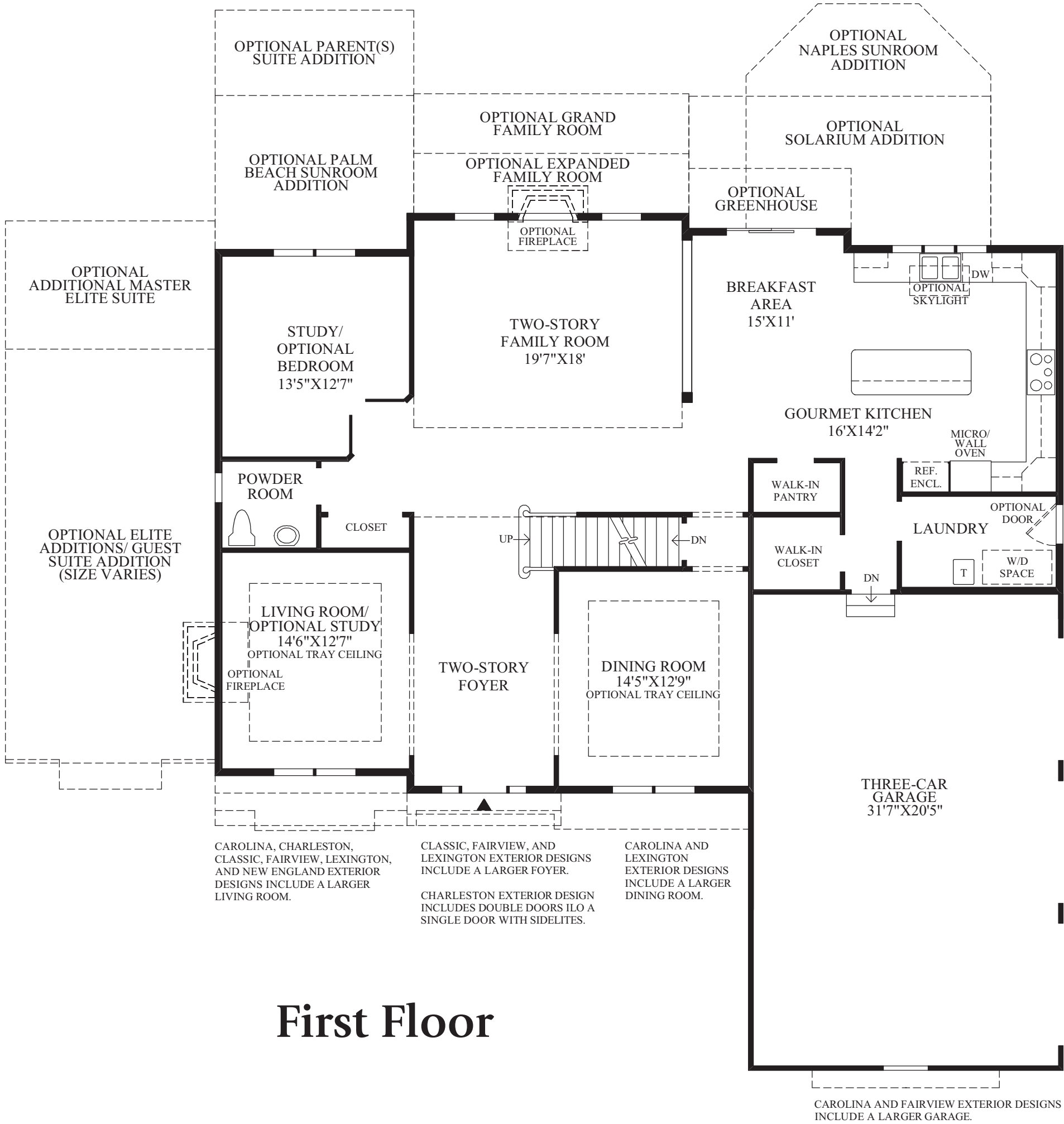
May be shown with optional features, including but not limited to brick front porch.  
Brick to belt (not shown) is included on all brick/stone exterior designs.



Charleston

May be shown with optional features, including but not limited to brick front porch.  
Brick to belt (not shown) is included on all brick/stone exterior designs.





THE DUKE HIGHLIGHTS

- From the two-story foyer the visitor is treated to welcoming views of the family room, the formal living room, and the spacious dining room.
- The spacious gourmet kitchen features a center island, a pantry, and is adjoined by a breakfast area.
- The large two-story family room is a beautiful area for family gatherings, while the study is convenient yet private.
- At the top of the graceful stair is the master bedroom suite, with a columned entry to the master den, a large dressing area, a large master bath with Roman tub, private toilet area, and dual vanities.
- The hallway to the second floor bedrooms is enhanced with charming views of rooms below.
- Nine-foot ceilings throughout the first and second floors.



Foyer with Optional Oak Curved Main Stair and Iron Balusters