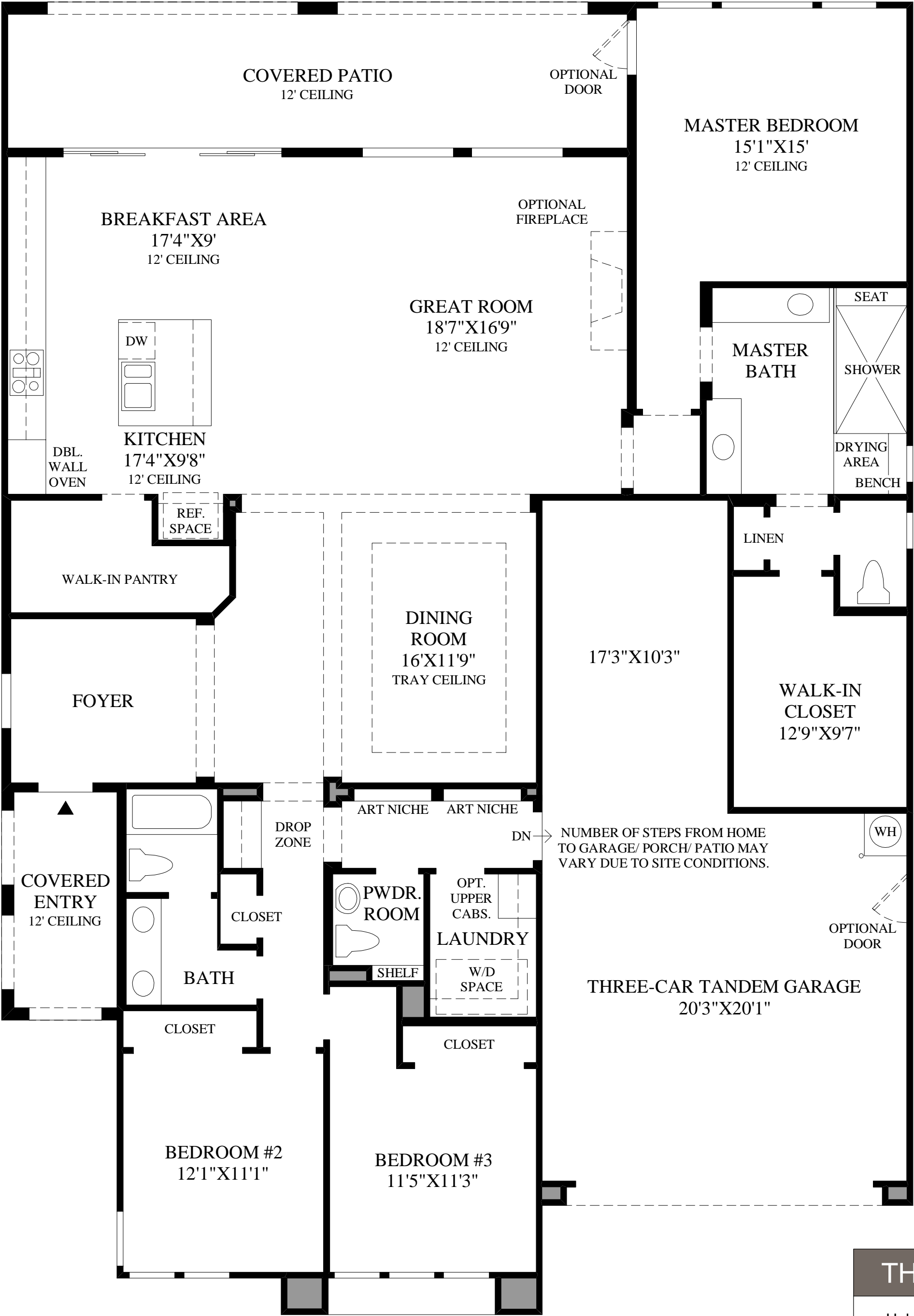


DRAFT



NUMBER OF STEPS FROM HOME TO GARAGE/ PORCH/ PATIO MAY VARY DUE TO SITE CONDITIONS.

THE ECLIPSE HIGHLIGHTS

- Helping to give an open and airy feel throughout the home are appealing 10' ceilings.
- The covered entry adds curb appeal before opening to a welcoming foyer.
- Soaring 12' ceilings unify the great room and kitchen creating an ideal space for entertaining.
- The appealing kitchen offers a spacious walk-in pantry, a center island with a breakfast bar, and a breakfast area perfect for casual dining.
- Expansive sliding doors open to the covered patio which offers an exceptional outdoor living space.
- A well-sized master bedroom with a 12' ceiling opens to a luxurious master bath which includes dual vanities, a large shower with a seat and a drying area, as well as a king-sized walk-in closet.

DRAFT

Floor Plan
DESERT PRAIRIE EXTERIOR DESIGN SHOWN