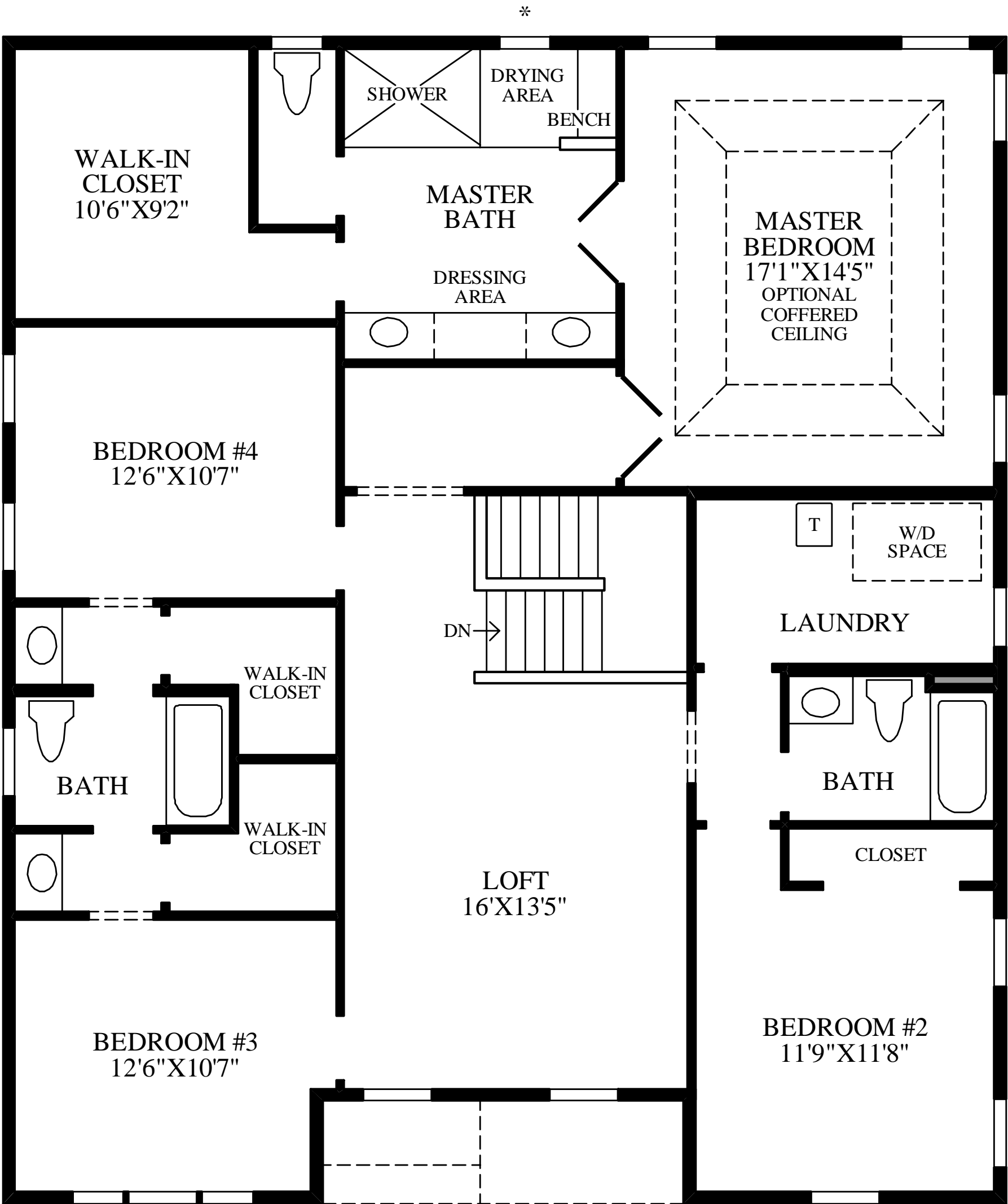


First Floor

BRANDYWINE, GLENSHIRE, FARMHOUSE, AND HERITAGE EXTERIOR DESIGNS INCLUDE A LARGER FOYER.



\* DENOTES HIGH WINDOW

BRANDYWINE, FARMHOUSE, GLENSHIRE, AND HERITAGE EXTERIOR DESIGNS INCLUDE A LARGER BEDROOM #3 AND LOFT.

DEVONSHIRE EXTERIOR DESIGN INCLUDES A LARGER LOFT.

Second Floor

THE EGERTON HIGHLIGHTS

- An inviting foyer with a tray ceiling is open to the flex space and leads to the great room beyond.
- A well-designed kitchen boasts a walk-in pantry and a large island that overlooks the adjacent casual dining space and the large great room that includes ample natural light through the triple sliding glass door.
- The master bedroom with double door entry boasts a walk-in closet and a private bath with a shower with drying area and bench, a private toilet area, and a dual-sink vanity with a dressing area.
- The second floor also features two bedrooms that share a Jack-and-Jill bath, an additional bedroom that has convenient access to the hall bath, a loft, and a convenient laundry.
- Other features of this home include a private study, a powder room, and a mud room with a walk-in closet.
- This home features nine-foot ceilings throughout the first and second floors.