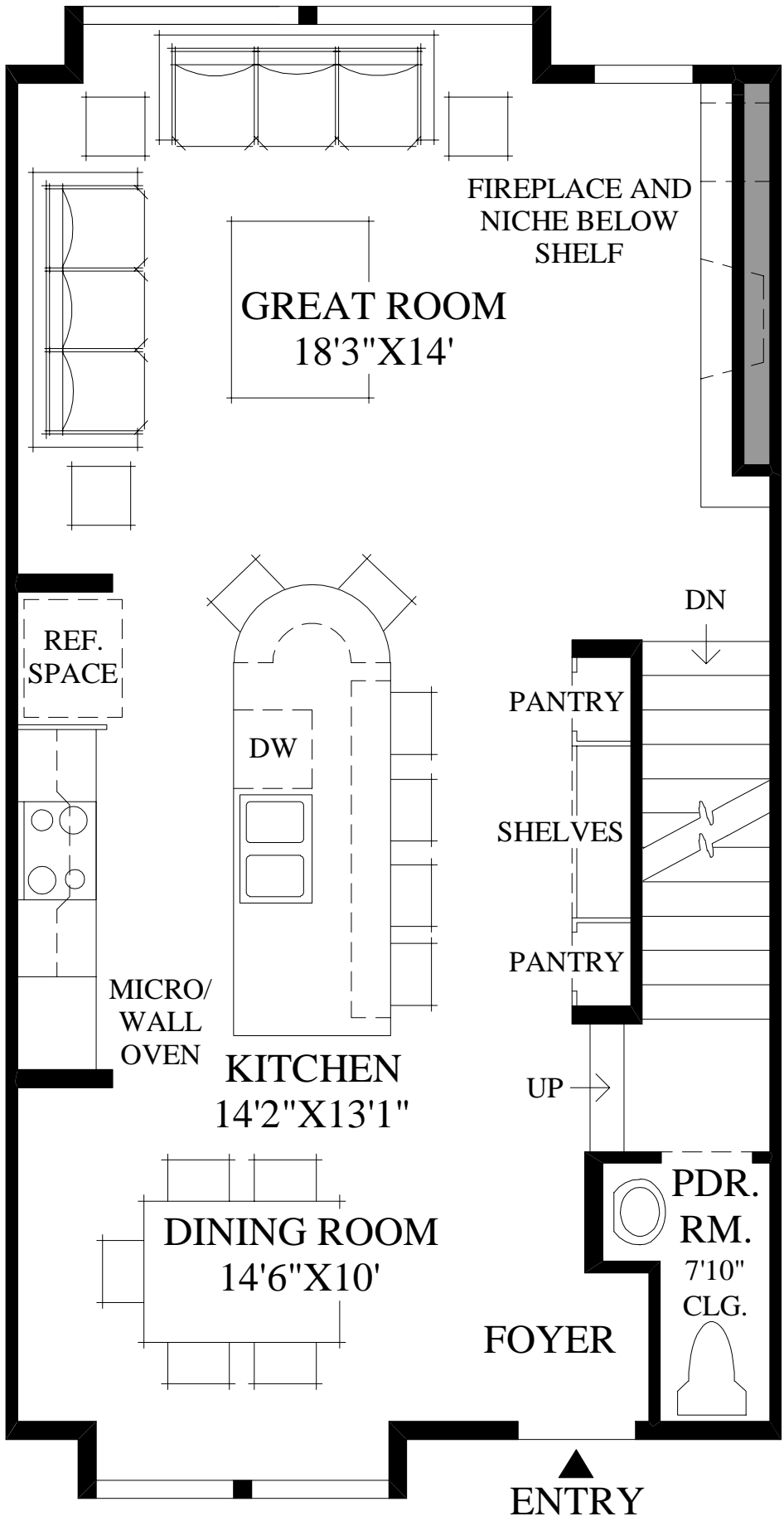
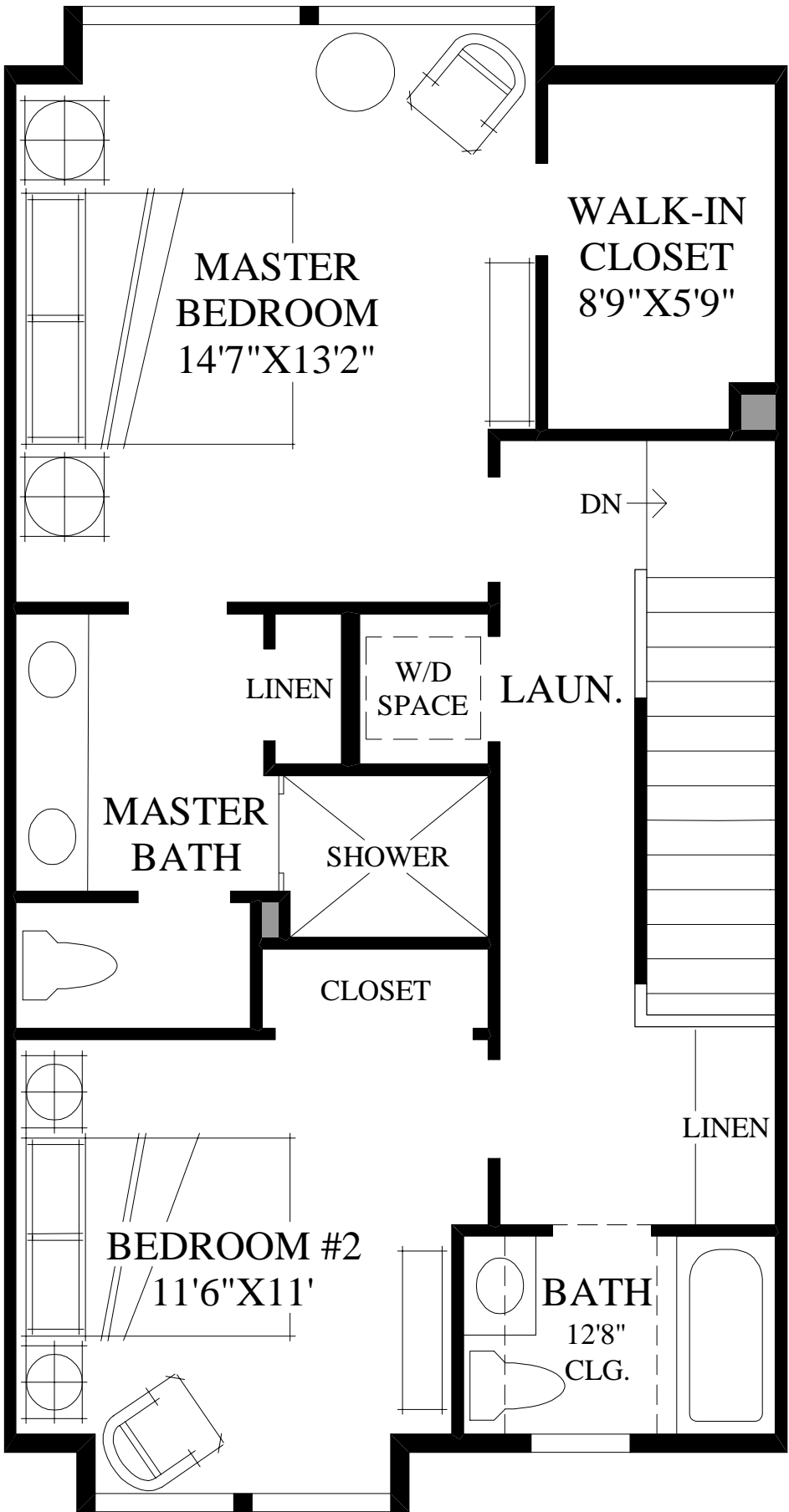


Basement

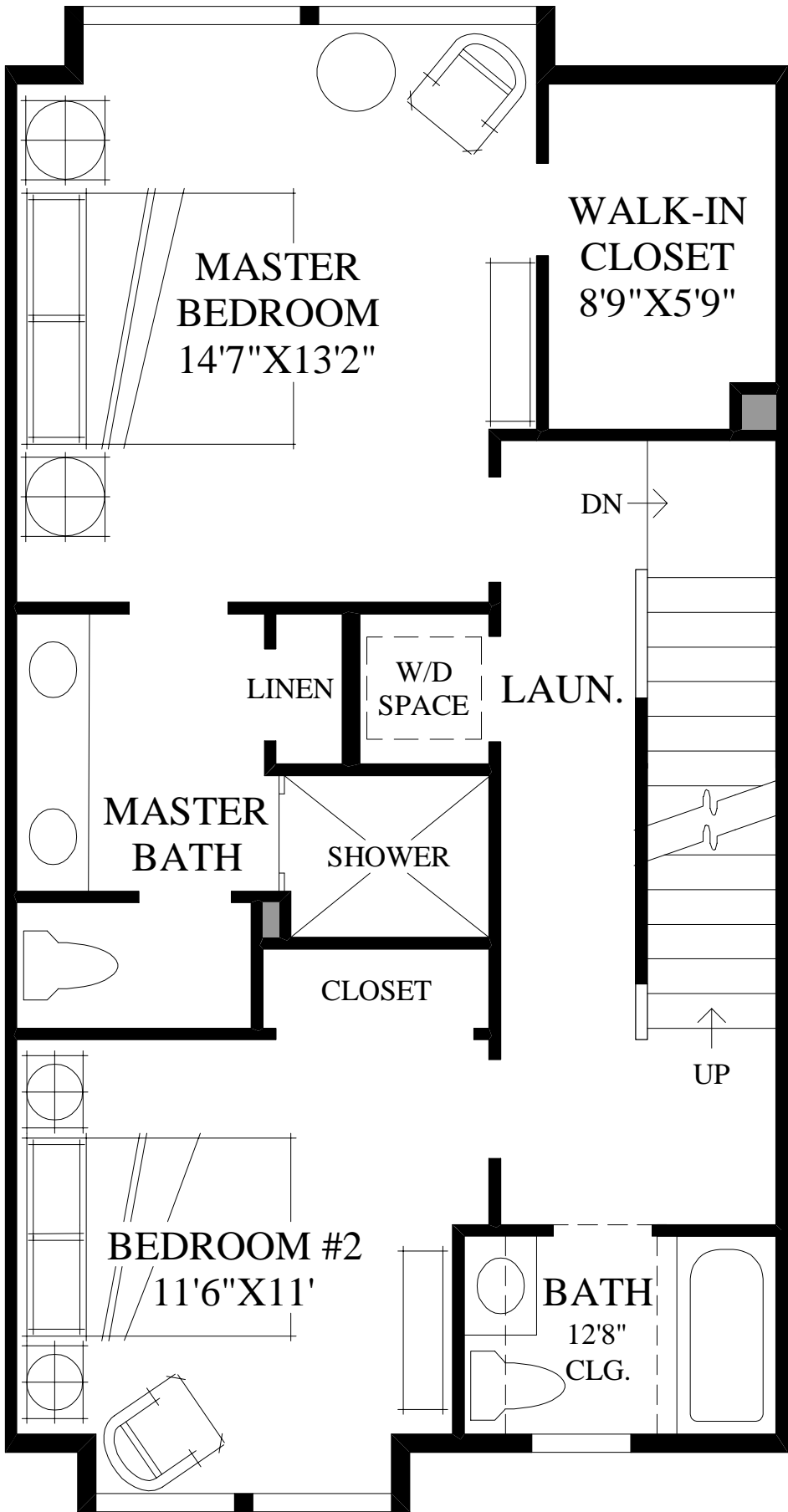


First Floor

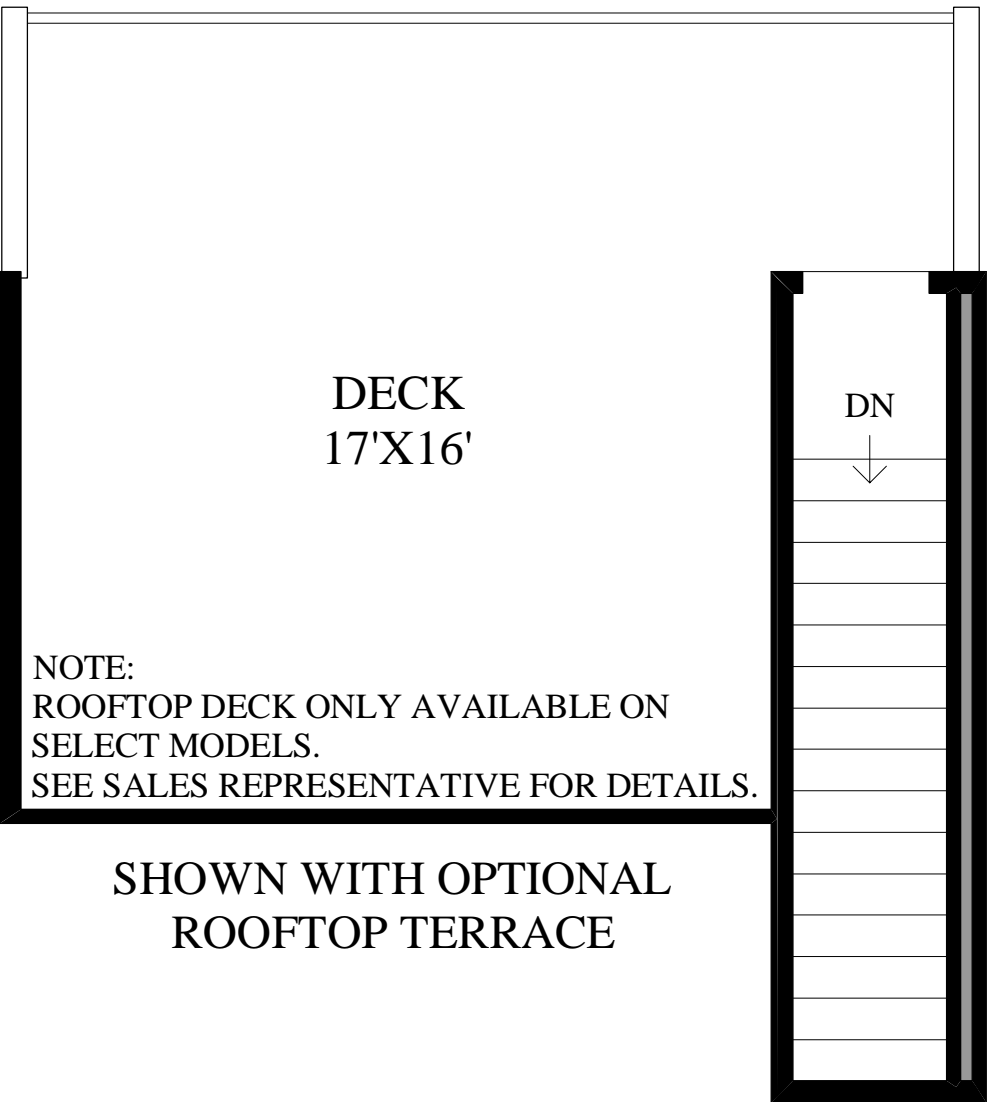
TRADITIONAL EXTERIOR DESIGN SHOWN



Second Floor



SHOWN WITH STAIRS TO  
OPTIONAL ROOFTOP TERRACE



NOTE:  
ROOFTOP DECK ONLY AVAILABLE ON  
SELECT MODELS.  
SEE SALES REPRESENTATIVE FOR DETAILS.

SHOWN WITH OPTIONAL  
ROOFTOP TERRACE

DRAFT

DRAFT

THE EMERSON HIGHLIGHTS

- Upon entering into the inviting foyer is the spacious dining room, which allows plenty of room for entertaining with elegance.
- This open floor plan unifies the main living spaces and boasts several sunny window displays that allow natural light to fill the home.
- A radiant fireplace completes the great room while adding warmth and comfort to the home, which is great for family gatherings.
- The luxurious master bedroom is paired with a large walk-in closet and a stylish master bath that includes a glass-enclosed shower.
- Both secondary bedrooms are well-proportioned and maintain a sense of separation from the main living spaces on the first floor.