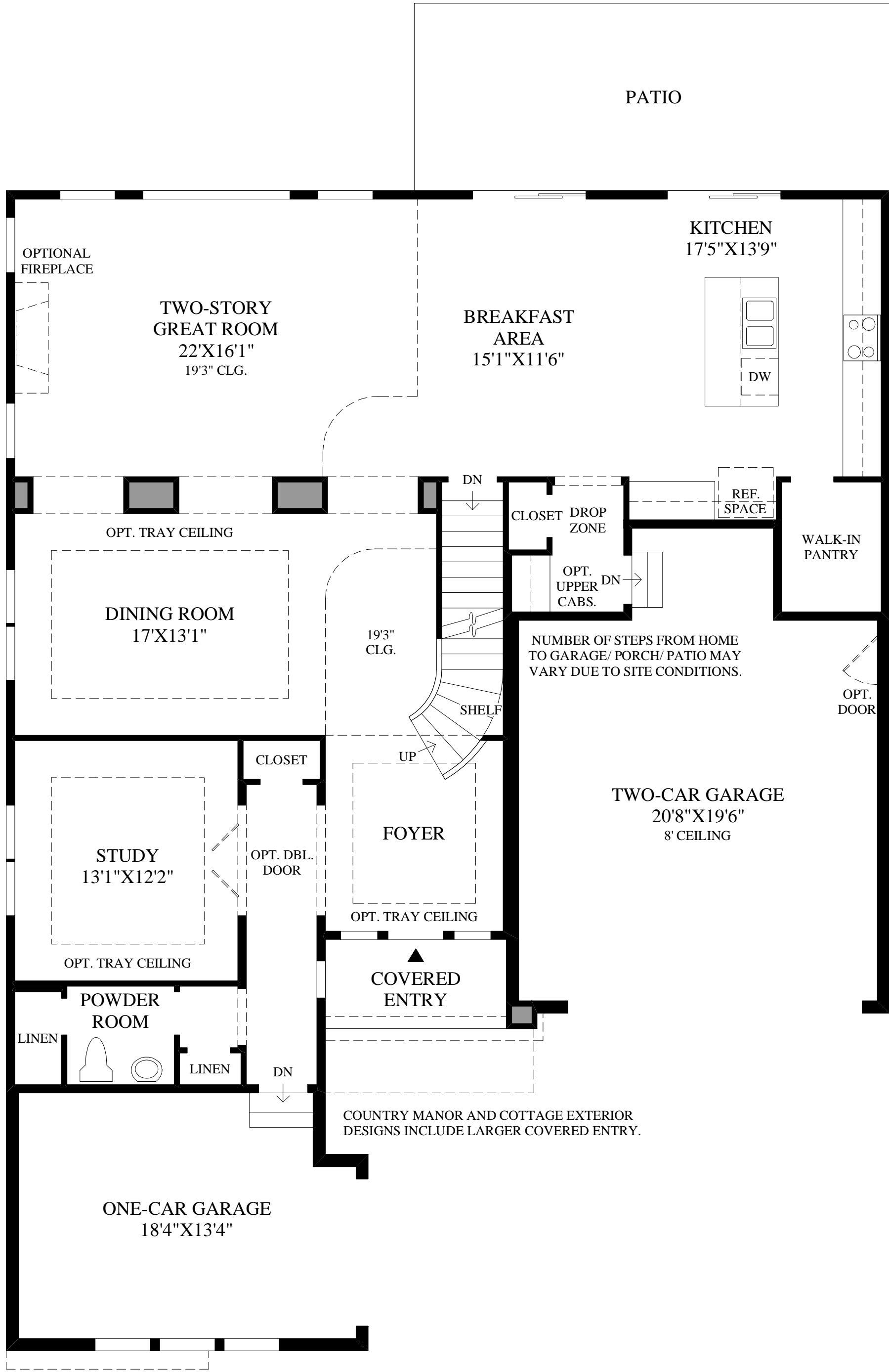
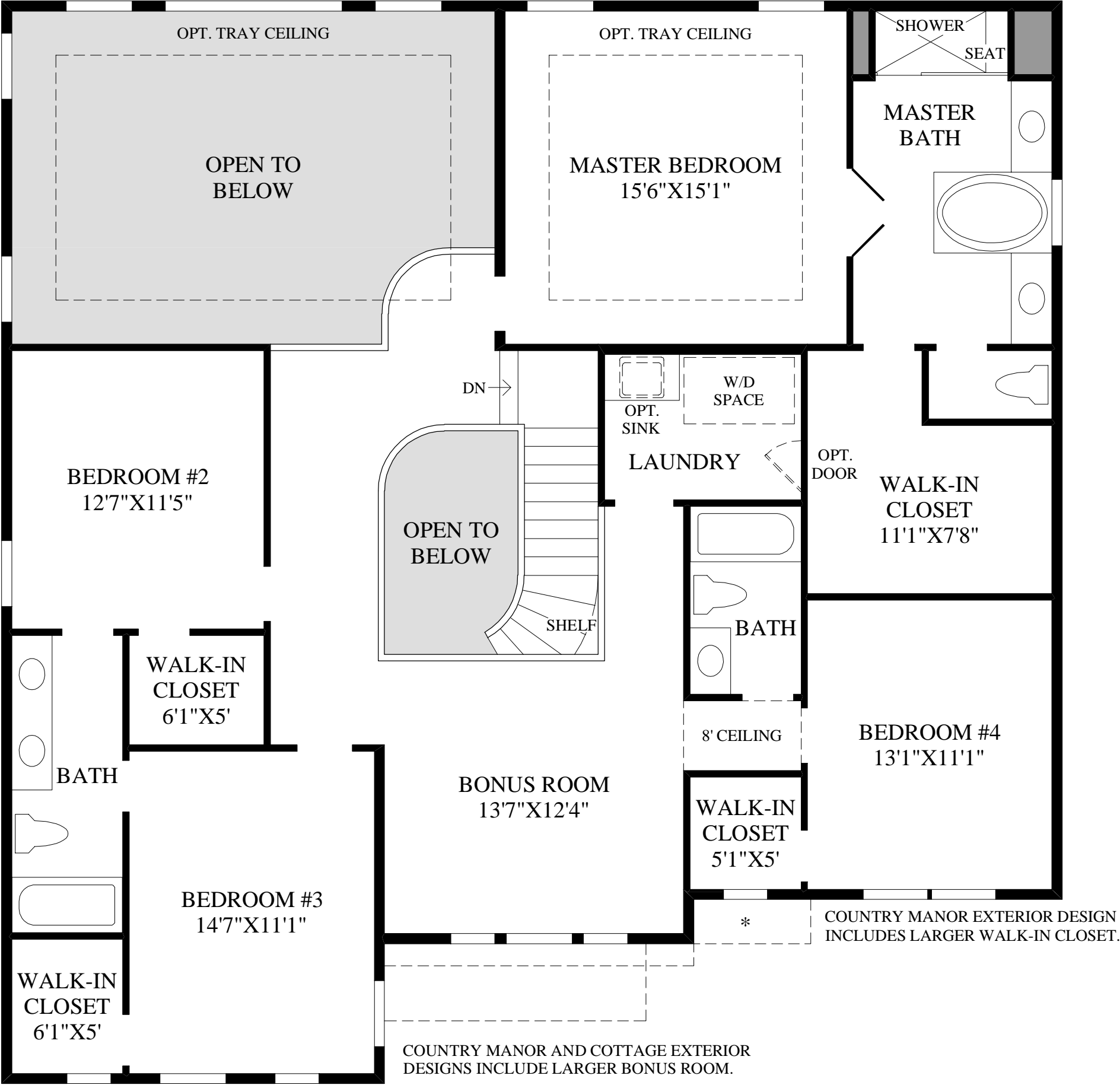


DRAFT



COTTAGE EXTERIOR DESIGN INCLUDES LARGER ONE-CAR GARAGE.

**First Floor**  
CRAFTSMAN EXTERIOR DESIGN SHOWN



\* DENOTES HIGH WINDOW

**Second Floor**

THE HAYDEN HIGHLIGHTS

- An inviting covered entry opens to a welcoming foyer with views towards a versatile study, an ornate staircase, and the elegant dining room beyond.
- The open great room, breakfast area, and kitchen are perfect for entertaining and hosting family events.
- This stylish kitchen features a center island with a breakfast bar, a walk-in pantry, ample counter space, and access to the patio.
- Featured in the desirable master bedroom is a generous walk-in closet and a luxurious master bath complete with a glass-enclosed shower with a seat and a soaking tub.
- Additional highlights include a convenient second-floor bonus room, a laundry within close proximity to the bedrooms, and a soaring two-story ceiling in the great room.

DRAFT