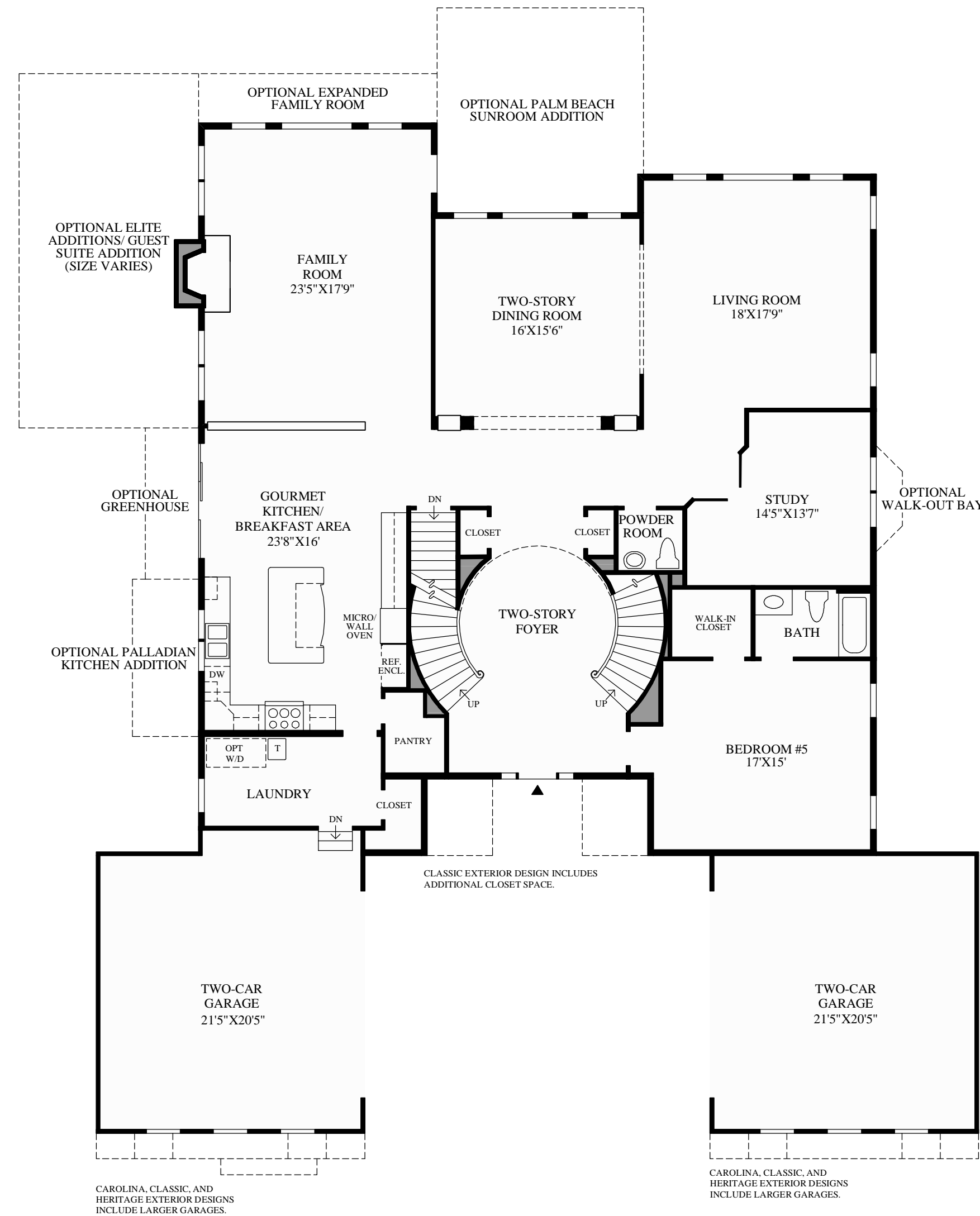


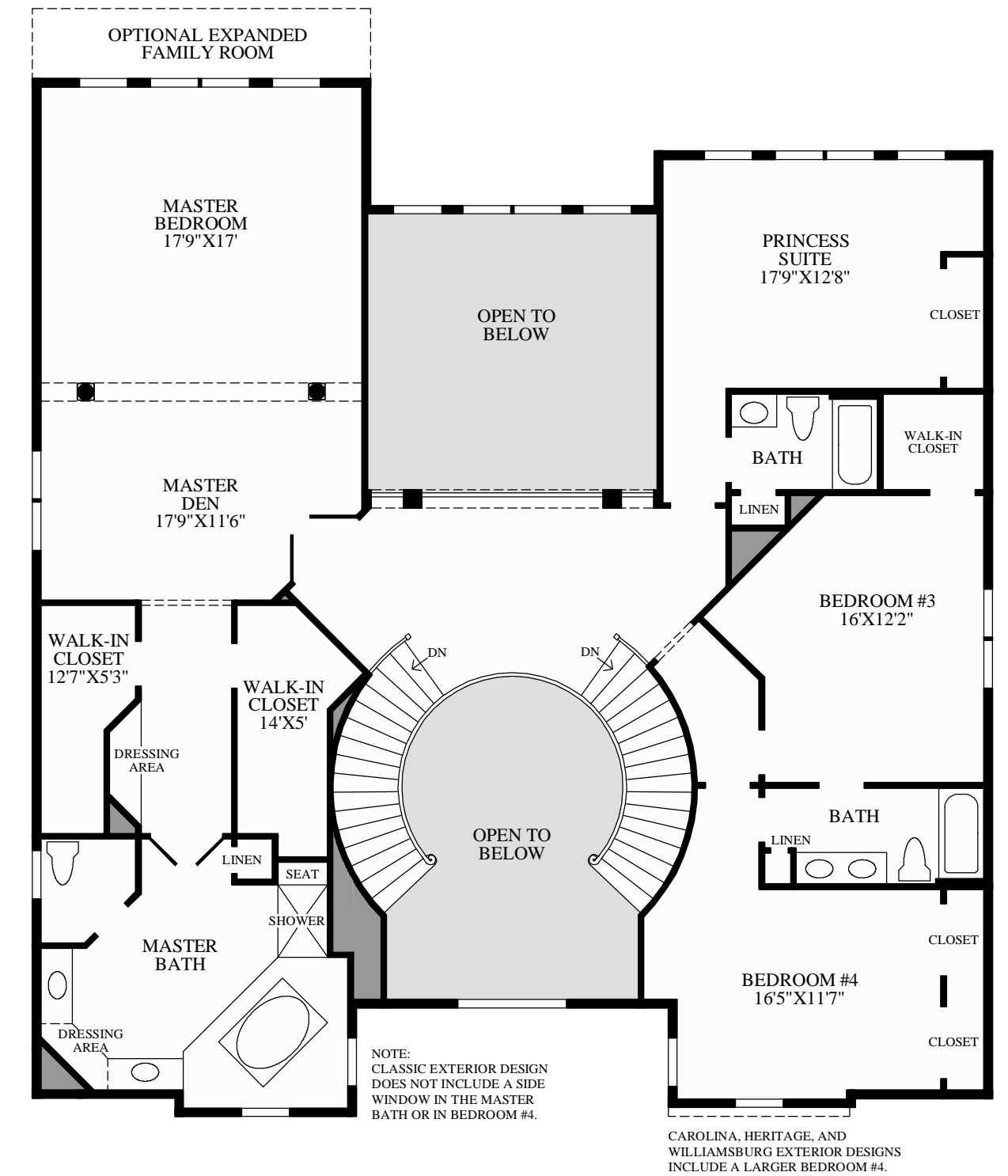
NOTE:  
DESIGNS ARE SUBJECT TO FIELD VARIATIONS DUE TO  
EXACT HOME ELEVATION, OPTIONS PURCHASED, AND  
LOCATION OF MECHANICAL AND SUMP PUMP  
EQUIPMENT, WHICH MAY ALSO VARY AMONG  
INDIVIDUAL LOTS AND COMMUNITIES.

● DENOTES STRUCTURAL STEEL LALLY COLUMNS THAT CAN NEVER BE REMOVED. OPTIONS MAY ADD ADDITIONAL COLUMNS. PLEASE CONSULT SALES REPRESENTATIVE FOR SPECIFIC DETAILS.

## Lower Level



## First Floor



**NOTE:**  
CLASSIC EXTERIOR DESIGN  
DOES NOT INCLUDE A SIDE  
WINDOW IN THE MASTER  
BATH OR IN BEDROOM #4.

CAROLINA, HERITAGE, AND WILLIAMSBURG EXTERIOR DESIGNS INCLUDE A LARGER BEDROOM #4.

## Second Floor

## THE MALVERN HIGHLIGHTS

- The two-story foyer shows off a dramatic stair and looks into the formal two-story dining room, with columned entry and large rear windows and is open to the formal living room.
- The kitchen is perfectly outfitted for creativity and efficiency, with a roomy center work island and adjacent breakfast area.
- The large family room offers a comfortable gathering space, with an included fireplace and ample windows and door.
- Private study and first floor bedroom suite are included.
- The spacious master suite includes a den, two large walk-in closets, and a master bath with a private toilet area, a separate shower, a Roman tub, and dual vanities.
- Ten-foot ceilings throughout the first floor and nine-foot ceilings throughout the second floor.



Foyer