

Anilles

THE MASSIANO | Exterior Designs



West Indies

THE MASSIANO

THE MASSIANO | Interior



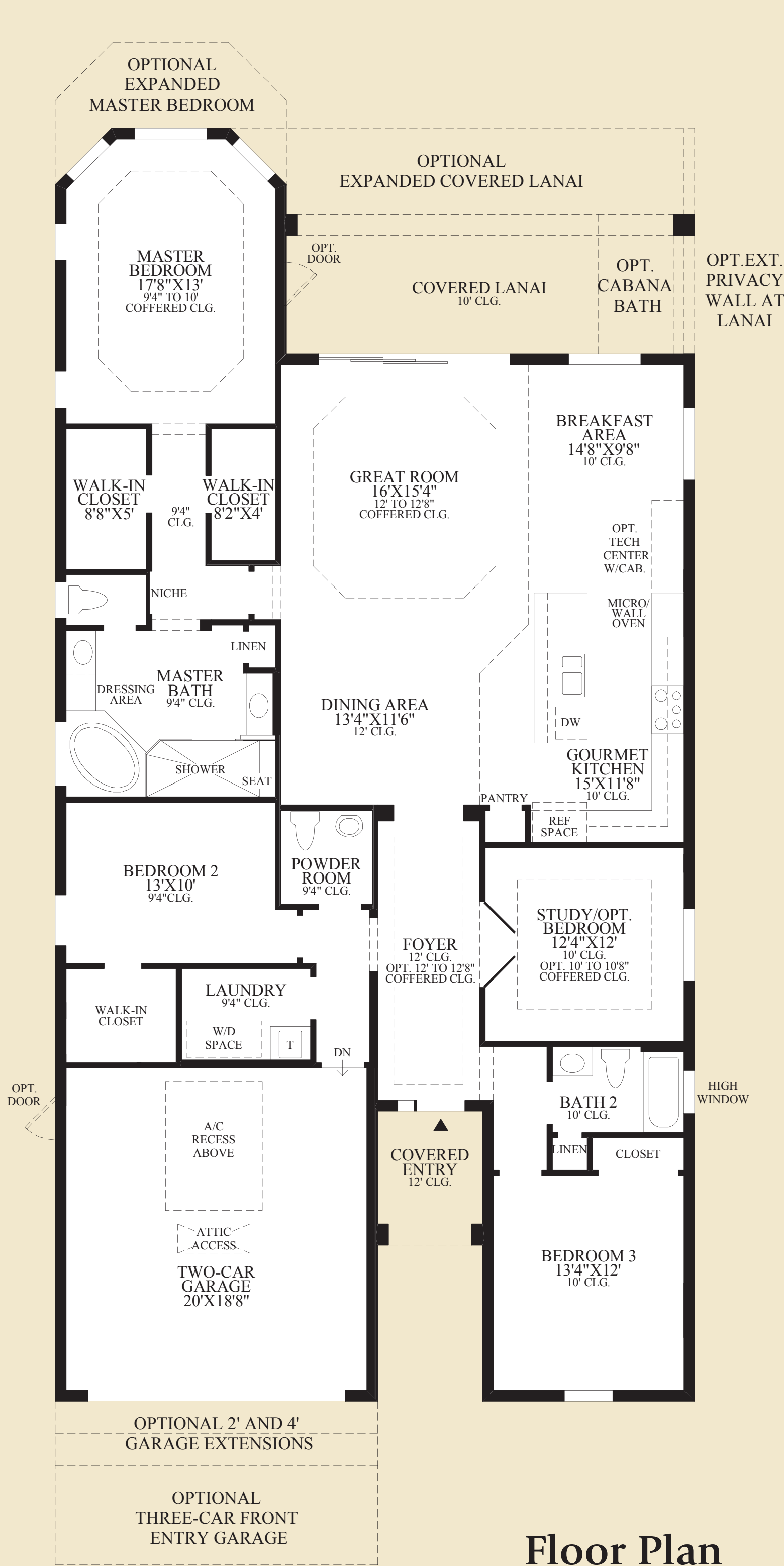
Master Bedroom With Optional Door



Island Colonial

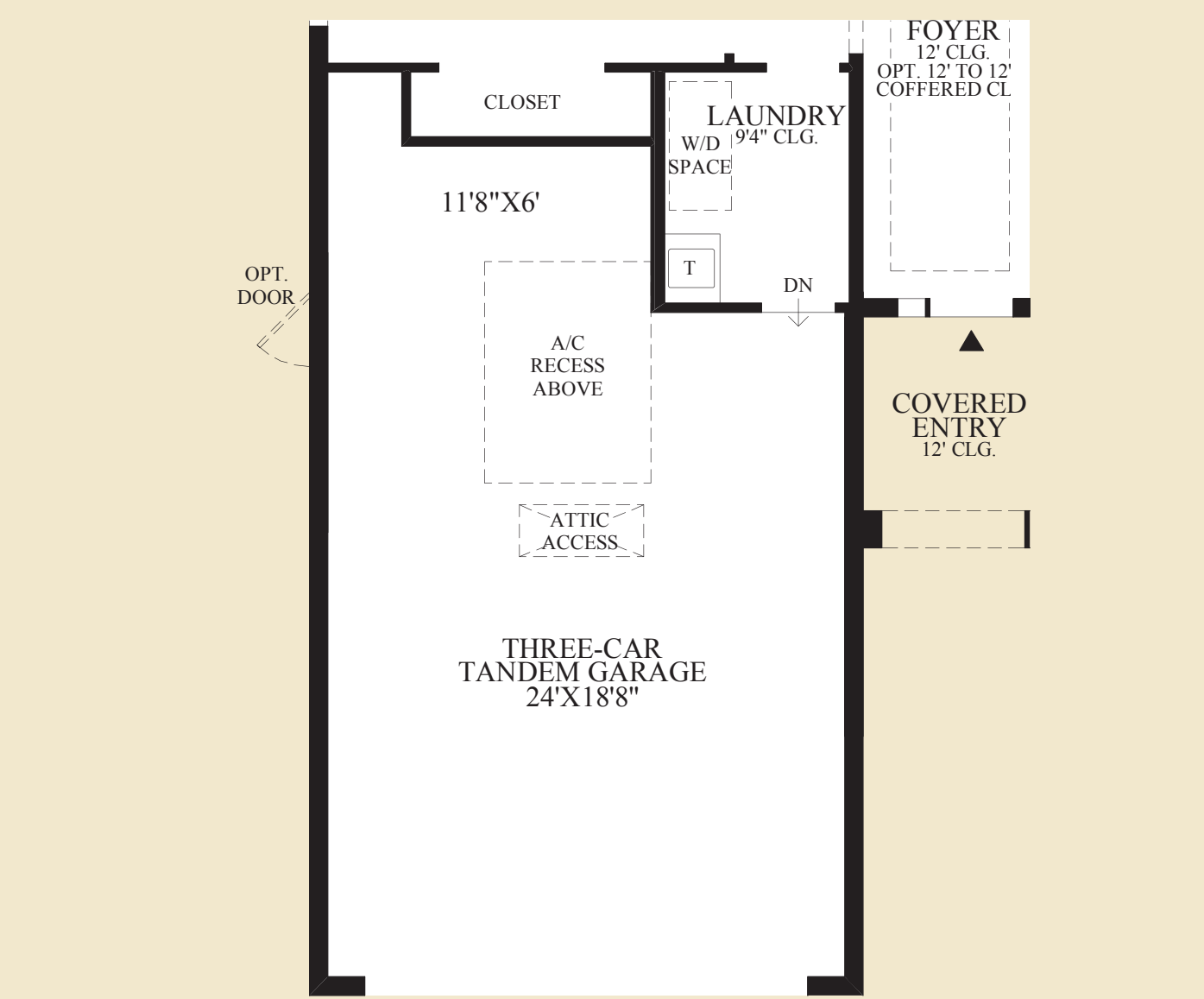


Caribbean



Floor Plan

ISLAND COLONIAL EXTERIOR DESIGN SHOWN



SHOWN WITH OPTIONAL THREE - CAR FRONT ENTRY GARAGE



SHOWN WITH STAIRS TO OPTIONAL FINISHED LOFT WITH BEDROOM AND BATHROOM

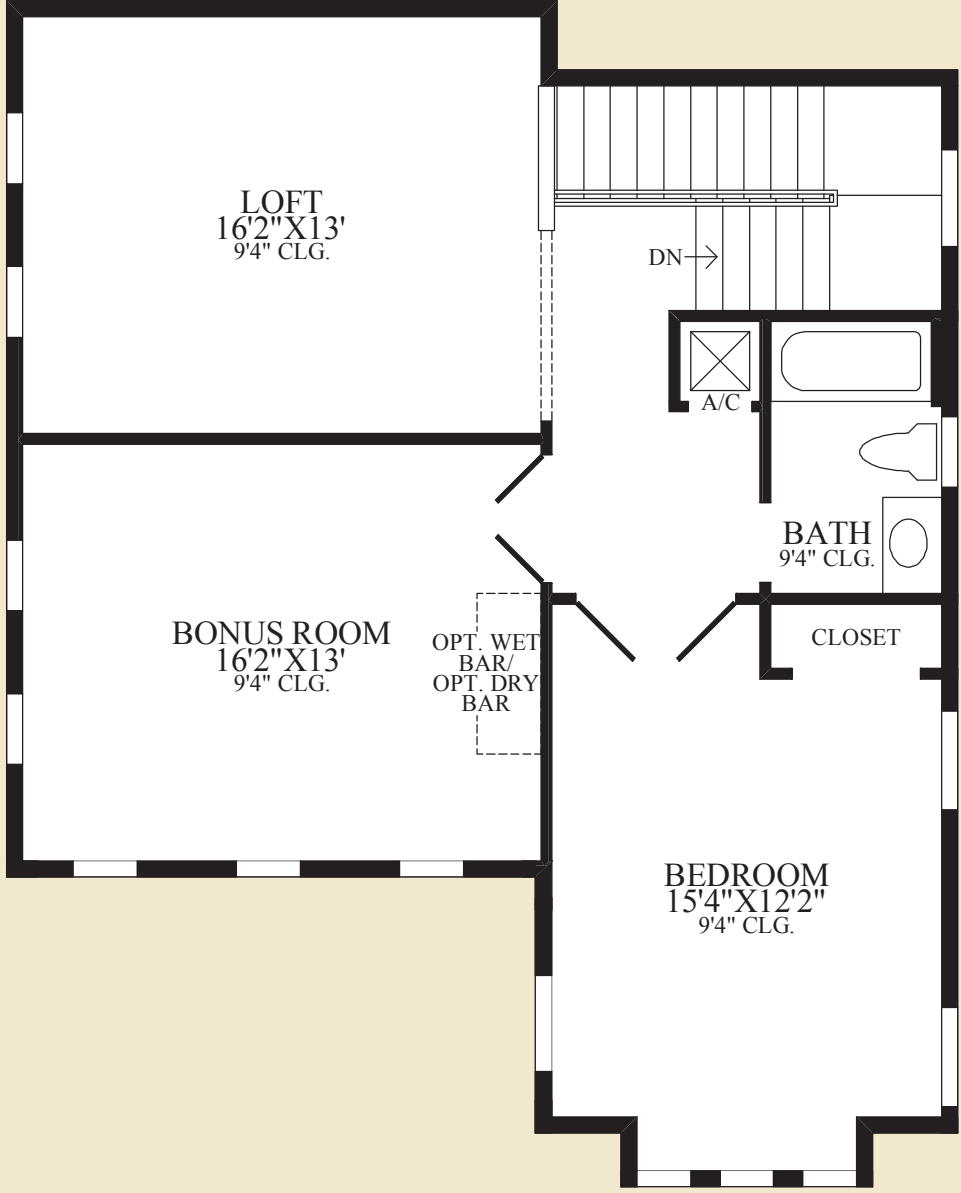
NOTE: THIS OPTION FEATURES AN ADDITIONAL 212 SQ. FT. OF AIR CONDITIONED LIVING AREA.

NOTE: OPTION 263025 FINISHED LOFT WITH BEDROOM AND BATHROOM MUST BE PURCHASED IN CONJUNCTION WITH THIS OPTION.

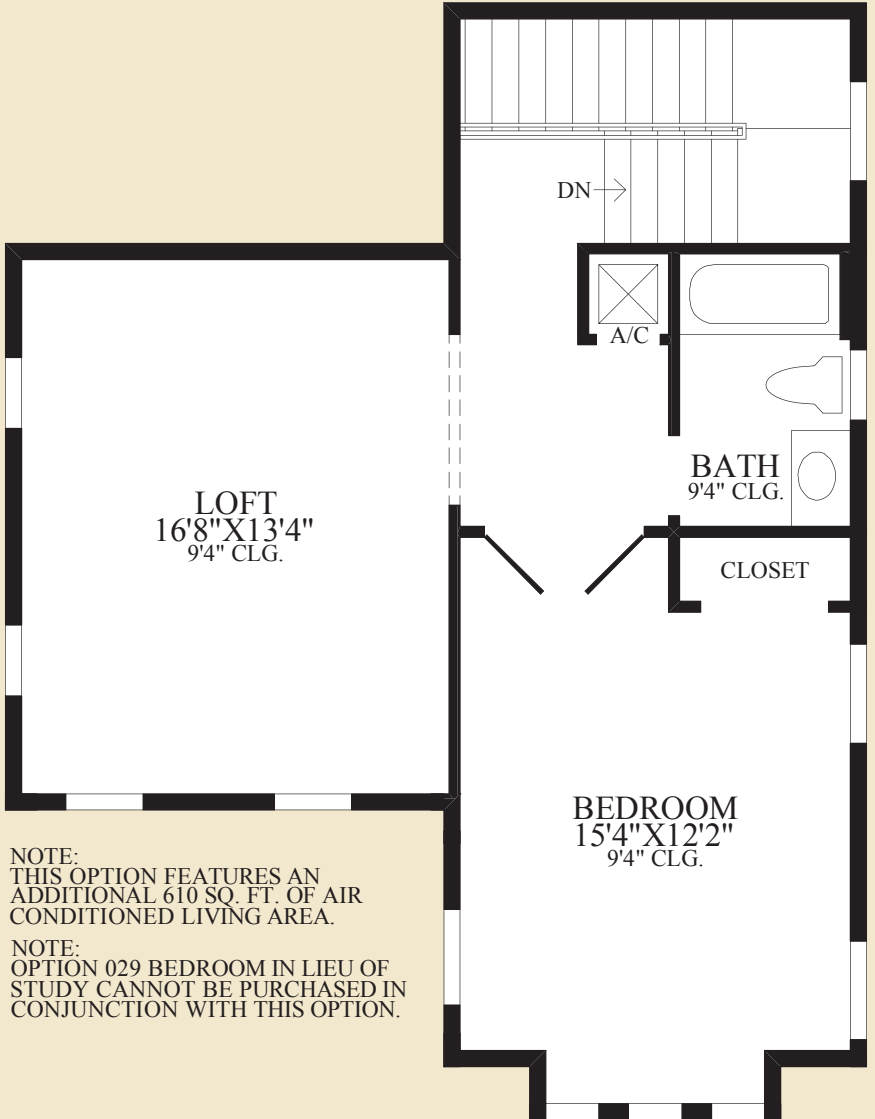
NOTE: OPTION 028 FIFTH BEDROOM, 032 ADDITIONAL BEDROOM WITH BATH AND 263041 EXTENDED LOFT CANNOT BE PURCHASED IN CONJUNCTION WITH THIS OPTION.

NOTE: OPTION 029 BEDROOM IN LIEU OF STUDY CANNOT BE PURCHASED IN CONJUNCTION WITH THIS OPTION.

NOTE: THIS OPTION FEATURES AN ADDITIONAL 610 SQ. FT. OF AIR CONDITIONED LIVING AREA.



SHOWN WITH OPTIONAL BONUS ROOM



SHOWN WITH OPTIONAL FINISHED LOFT WITH BEDROOM AND BATHROOM

THE MASSIANO HIGHLIGHTS

- This home features a covered entry that leads to the foyer and study with double-door entry.
- The living space of this home is conducive for entertaining with its open floor plan. The living area includes a formal dining room, gourmet kitchen with breakfast bar, sunlit breakfast area, expansive great room with coffered ceiling, and access to the covered lanai.
- The master bedroom is highlighted by an elegant coffered ceiling, dual walk-in closets and a private bath with dual vanities, corner tub, separate shower, and private water closet.

Air Conditioned Living Area	2229 sq. ft.
Covered Lanai	220 sq. ft.
Covered Entry	54 sq. ft.



Gourmet Kitchen With Optional Tech Center With Cabinetry