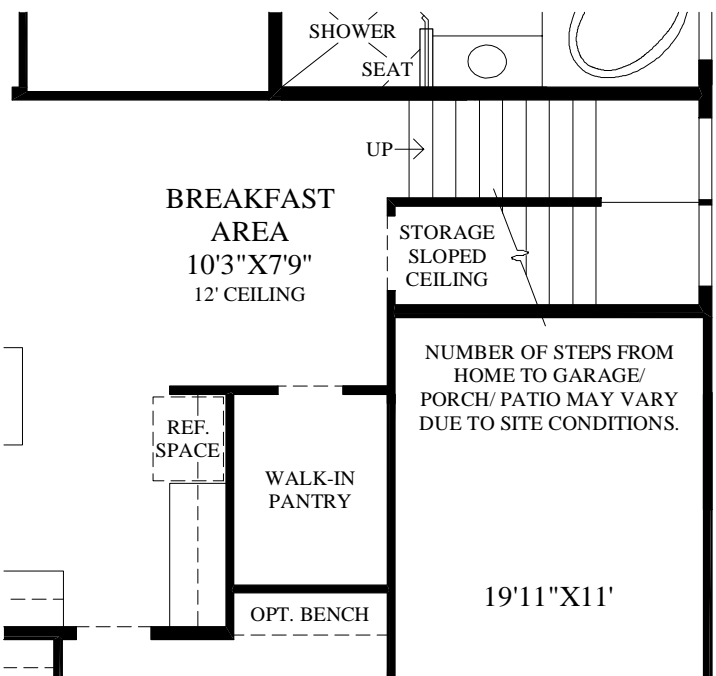
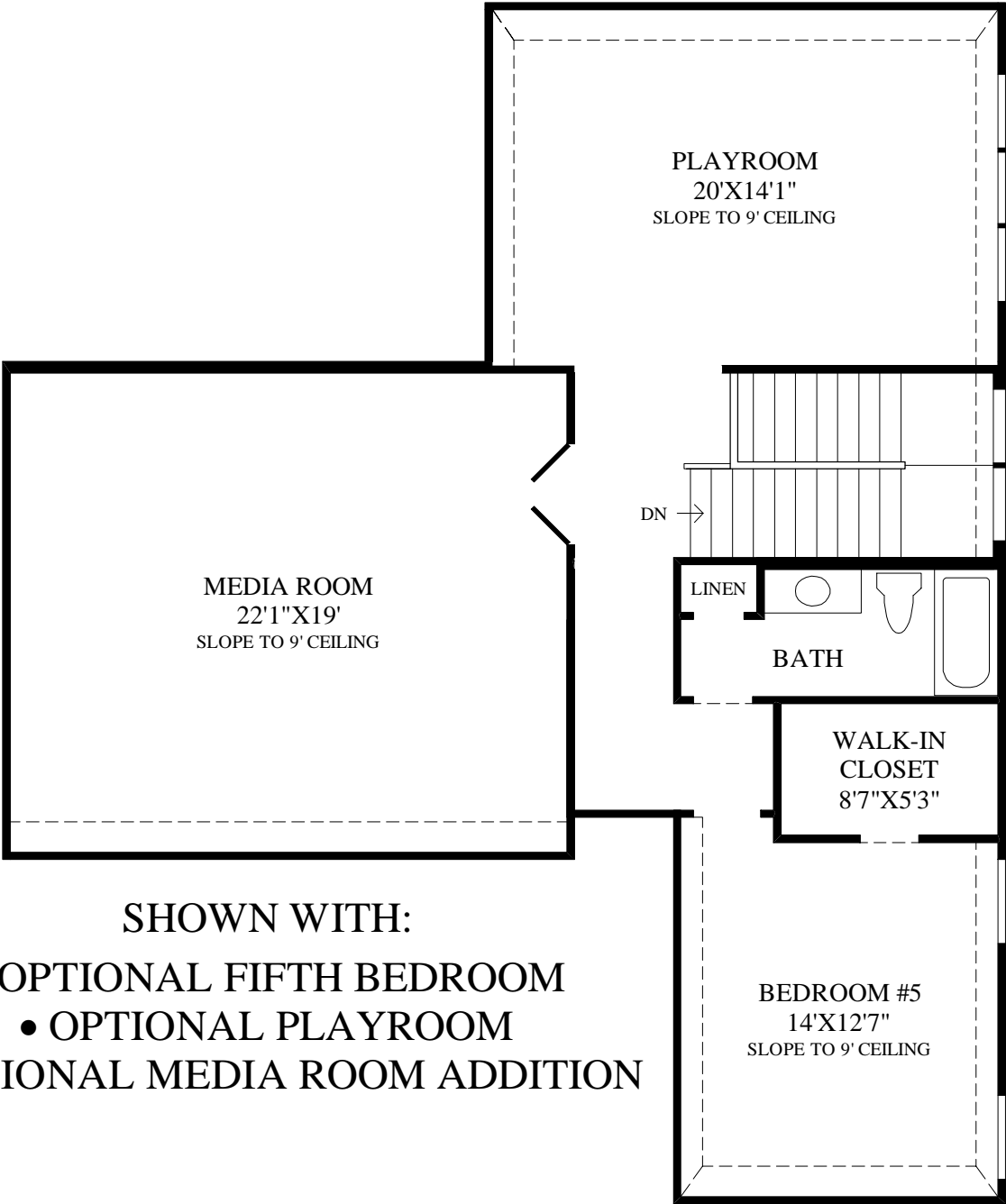


SHOWN WITH OPTIONAL
FOURTH BEDROOM



SHOWN WITH STAIRS TO
OPTIONAL SECOND FLOOR



SHOWN WITH:
• OPTIONAL FIFTH BEDROOM
• OPTIONAL PLAYROOM
• OPTIONAL MEDIA ROOM ADDITION

THE MIRABEL HIGHLIGHTS

- A picturesque foyer with an elegant tray ceiling leads to the classy dining room that is accentuated by a volume ceiling.
- The remarkable kitchen offers plenty of counter space, a large center island, a walk-in pantry, and an adjacent breakfast area.
- Perfect for entertaining, the captivating great room offers a cozy fireplace and an immense window display that is sure to impress.
- Enhancing the stunning master bedroom is a 13' tray ceiling, a stately bank of windows, and a luxurious master bath which includes dual vanities, a corner soaking tub, a glass-enclosed shower, and a generous walk-in closet.
- Additional highlights include a private courtyard, a desirable study, a formal dining room, an expansive rear patio, an additional covered porch just off the breakfast area, and elevated ceiling heights throughout the main living spaces.

Floor Plan
TRADITIONAL EXTERIOR DESIGN SHOWN