

THE MONTELENA | Exterior Designs



May be shown with optional features, including but not limited to tile roof.

THE MONTELENA

THE MONTELENA | Interior

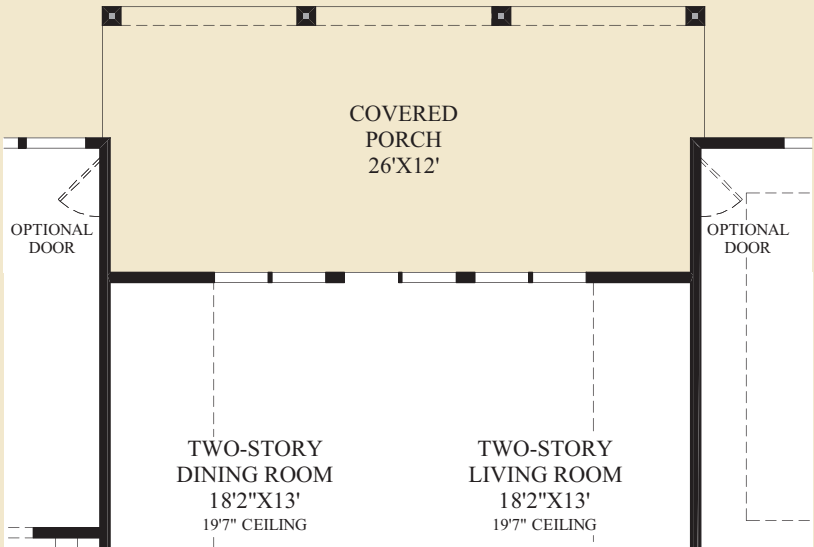


May be shown with optional features, including but not limited to tile roof.

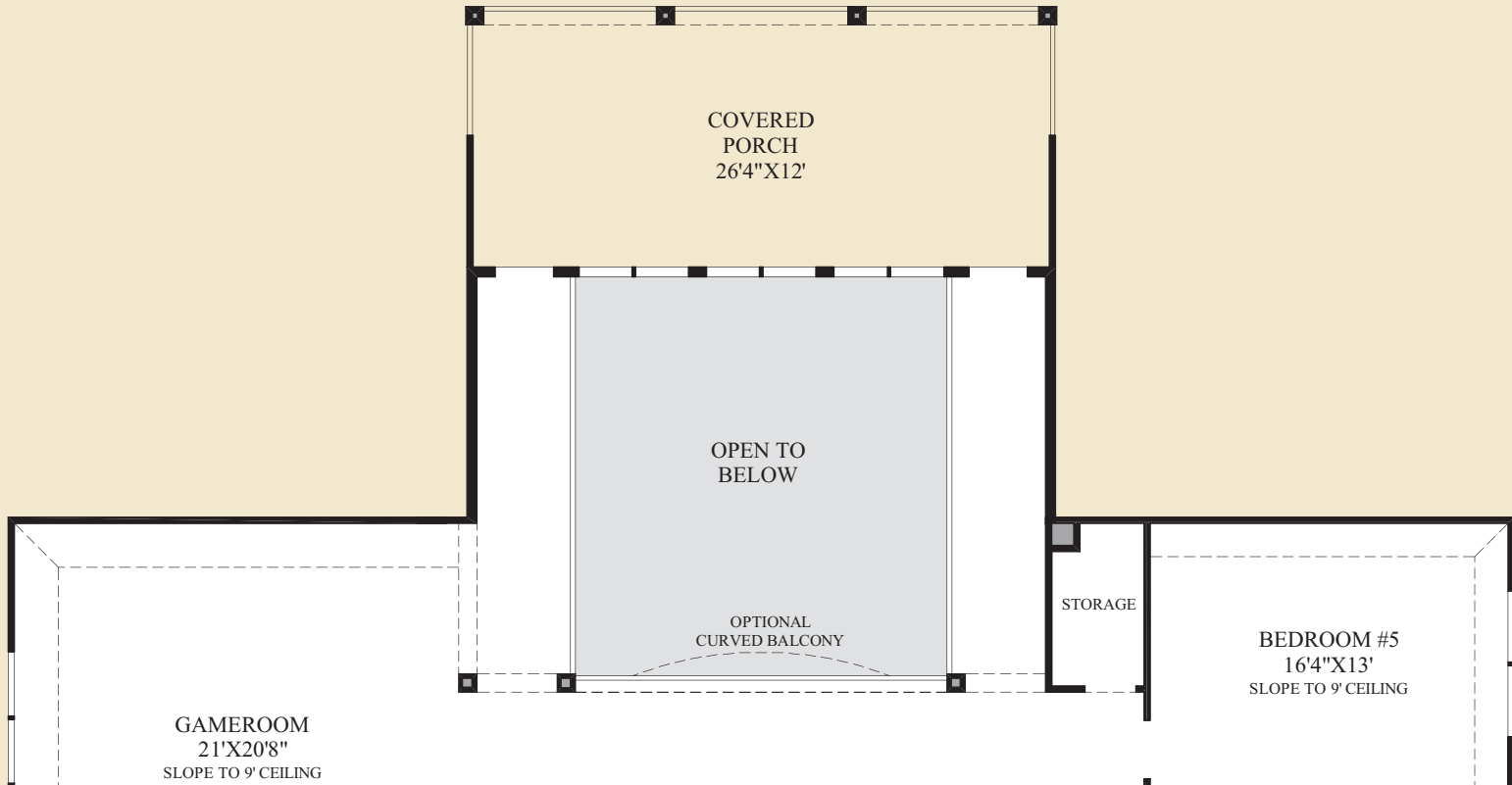


May be shown with optional features, including but not limited to metal roof, tile roof, and stone-front accents.

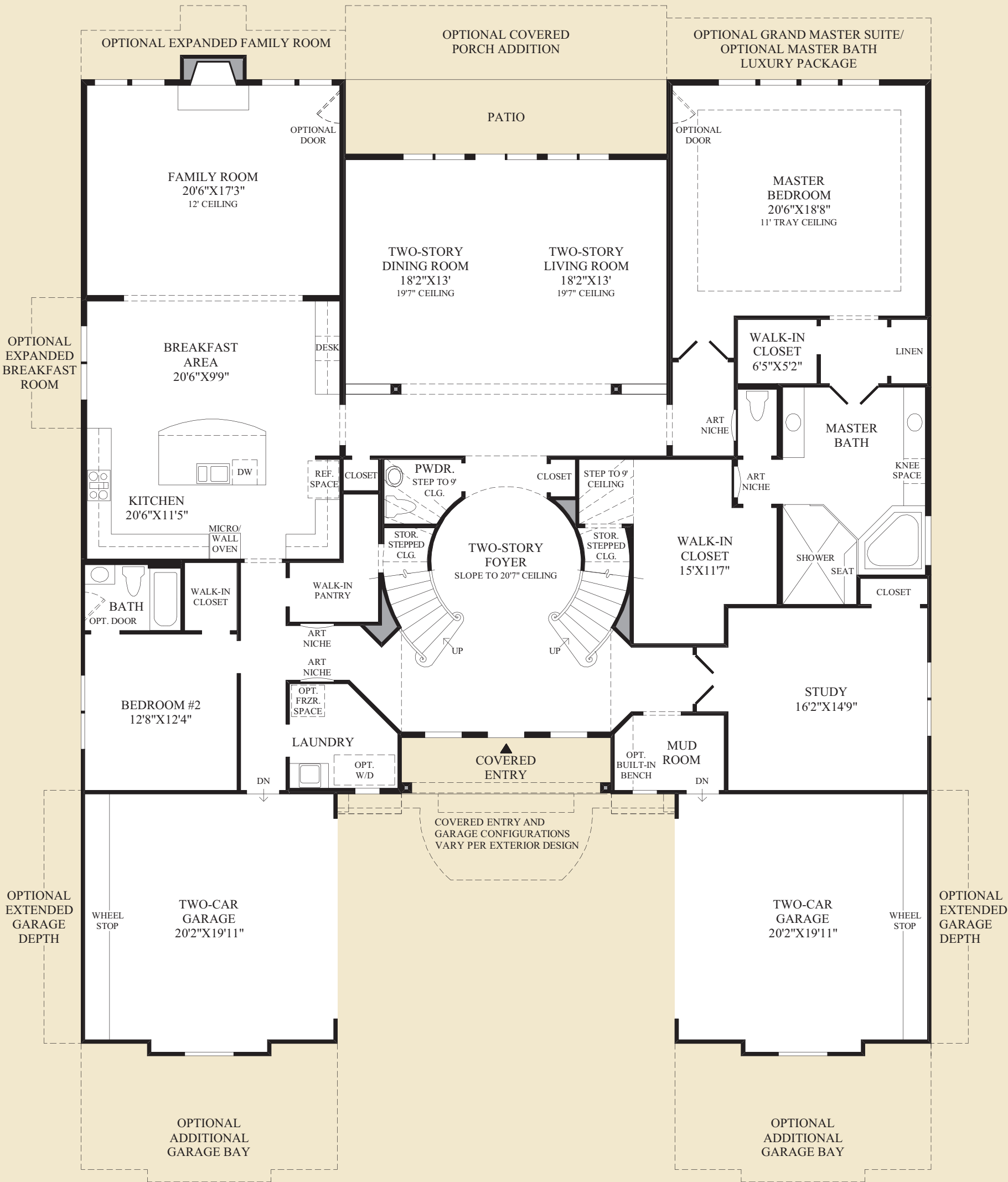
Two-Story Dining Room and Family Room



SHOWN WITH OPTIONAL
TWO-LEVEL COVERED PORCH

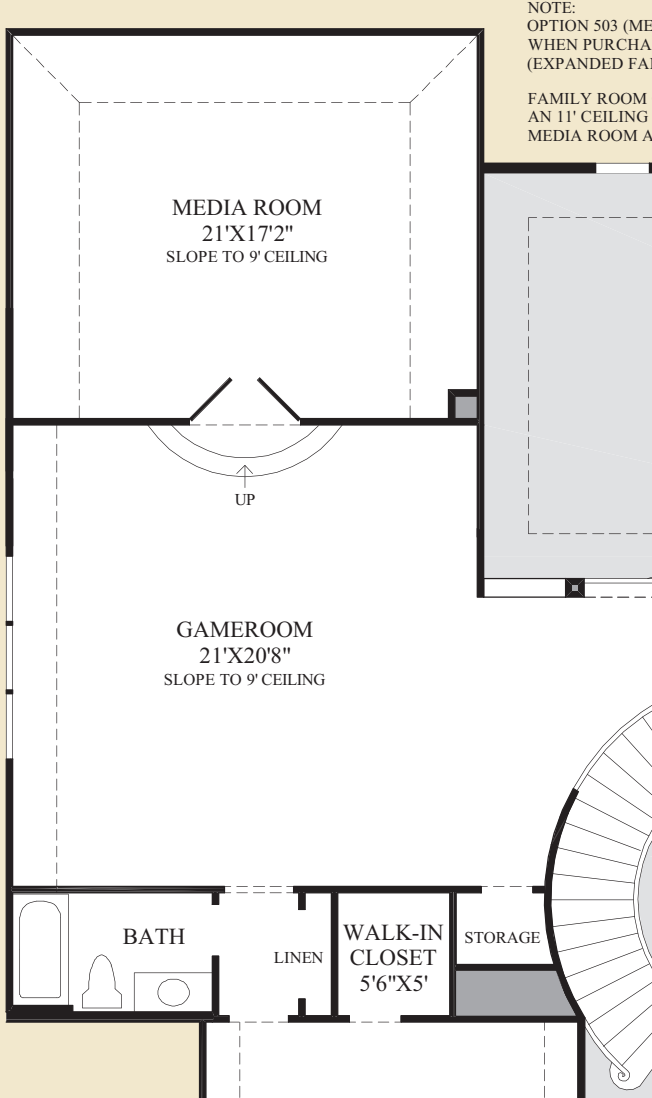


SHOWN WITH OPTIONAL
TWO-LEVEL COVERED PORCH

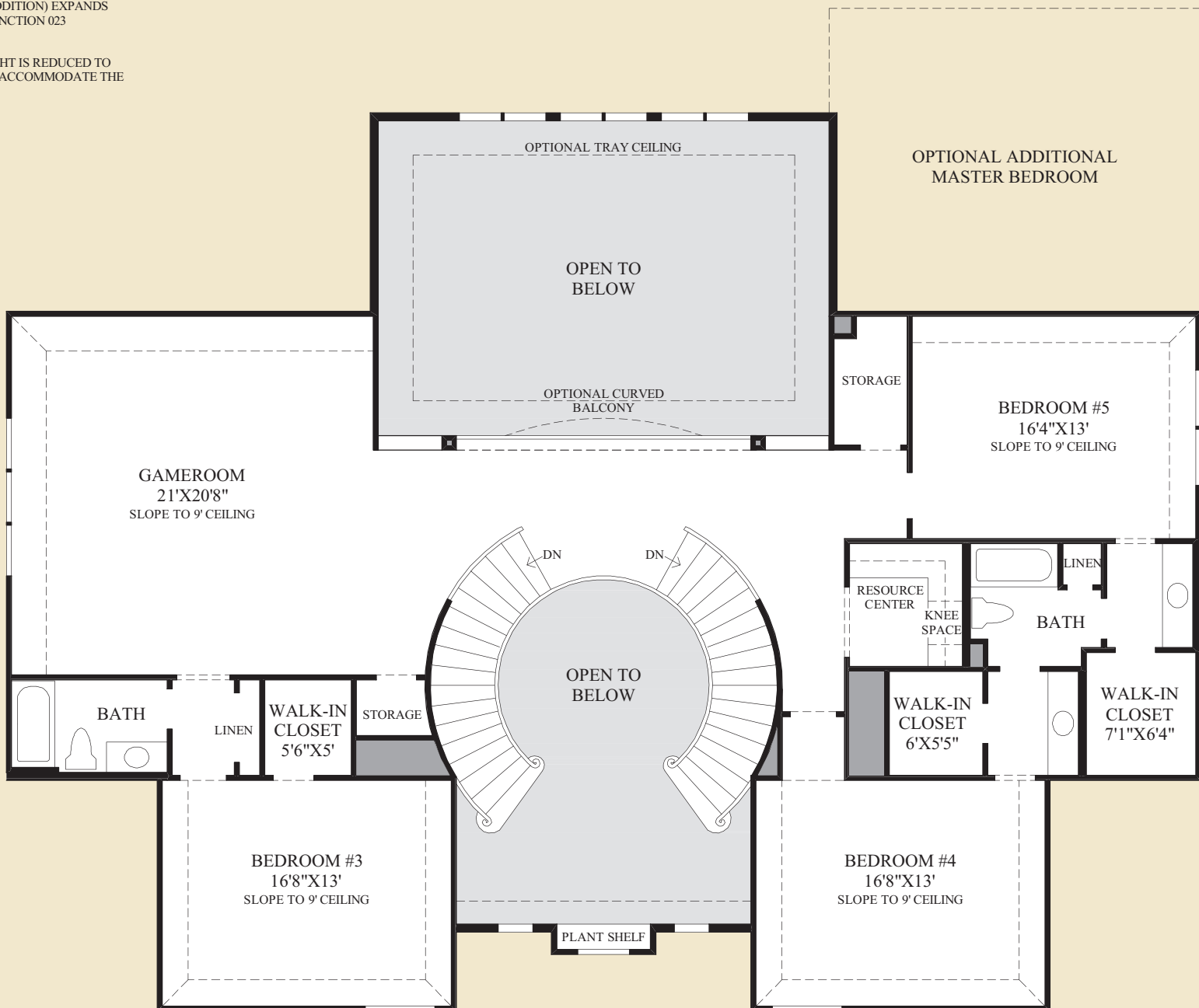


First Floor

TRADITIONAL EXTERIOR DESIGN SHOWN



SHOWN WITH OPTIONAL
MEDIA ROOM ADDITION



Second Floor

THE MONTELENA HIGHLIGHTS

- The magnificent two-story foyer proudly displays elegant circular staircases with a balcony overlook from above.
- Boasting a stunning array of windows and an atrium door, the breathtaking living and dining rooms are complemented by a two-story ceiling and a columned entry.
- A warm fireplace that is framed by radiant windows accentuates the delightful family room.
- Completing the well-equipped kitchen is a large center island, a walk-in pantry, and an adjoining sunlit breakfast area, both with views to the family room.
- The private study offers a grand double-door entry and is ideal for home office use.
- The distinguished master bedroom is enriched with an 11' tray ceiling, illuminating windows, sizable walk-in closets, and a lavish master bath.
- The expansive second floor includes a sensational gameroom, a magnificent resource center, and large secondary bedrooms.



Kitchen with Optional Walk-Out Bay