



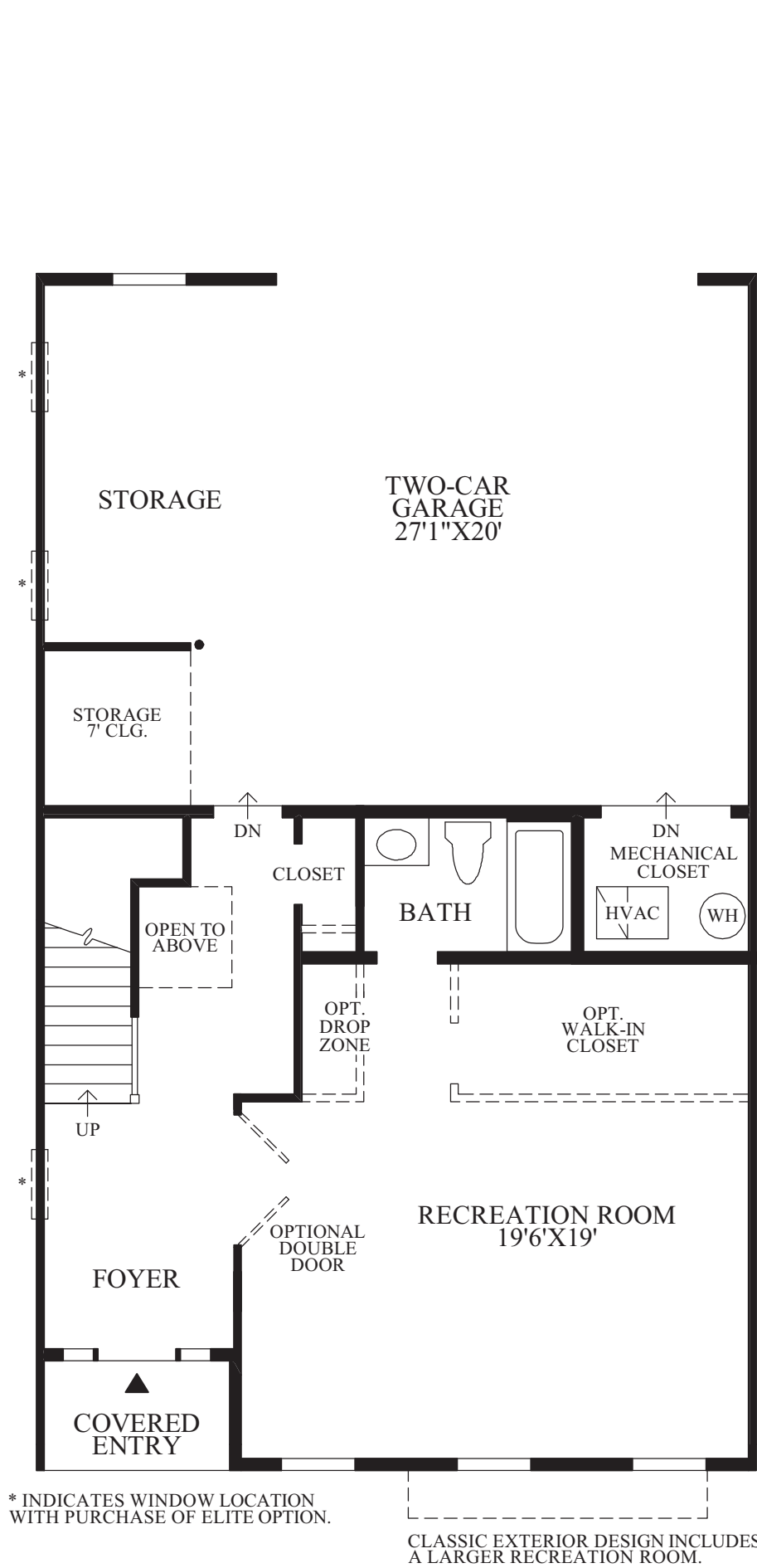
THE NEWMAN | Exterior Designs



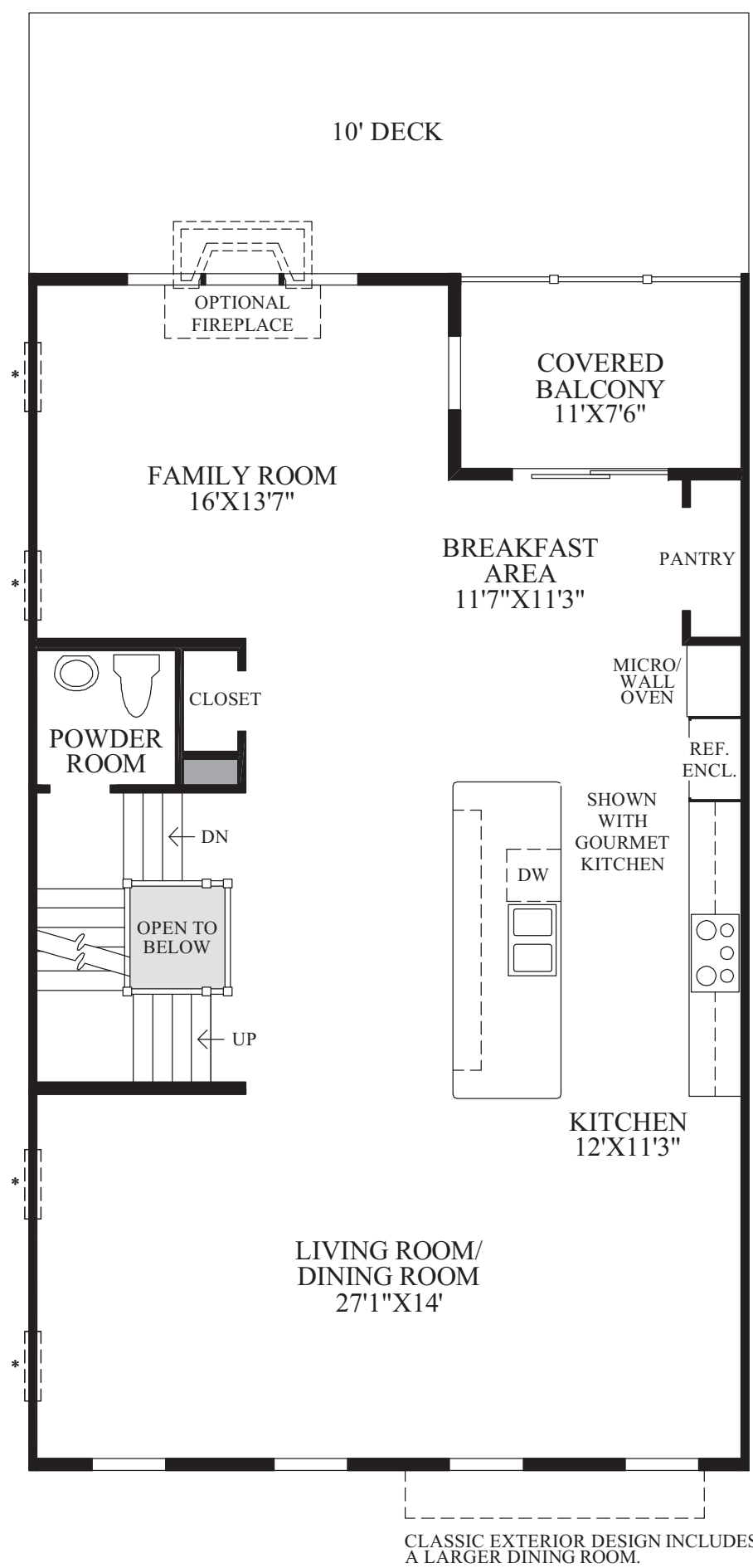
Toll Brothers  
AMERICA'S LUXURY HOME BUILDER

This house was produced using recycled products.

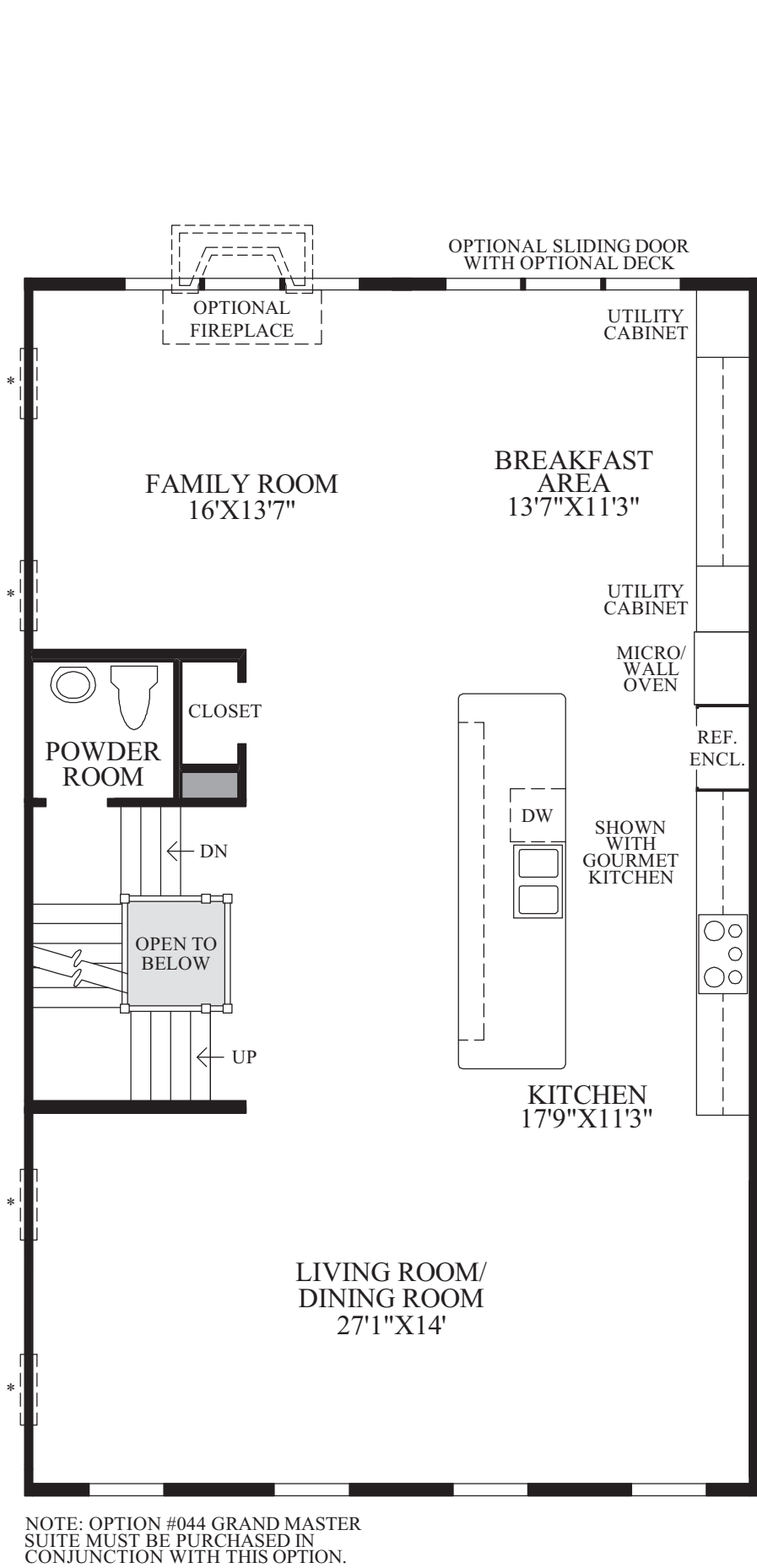




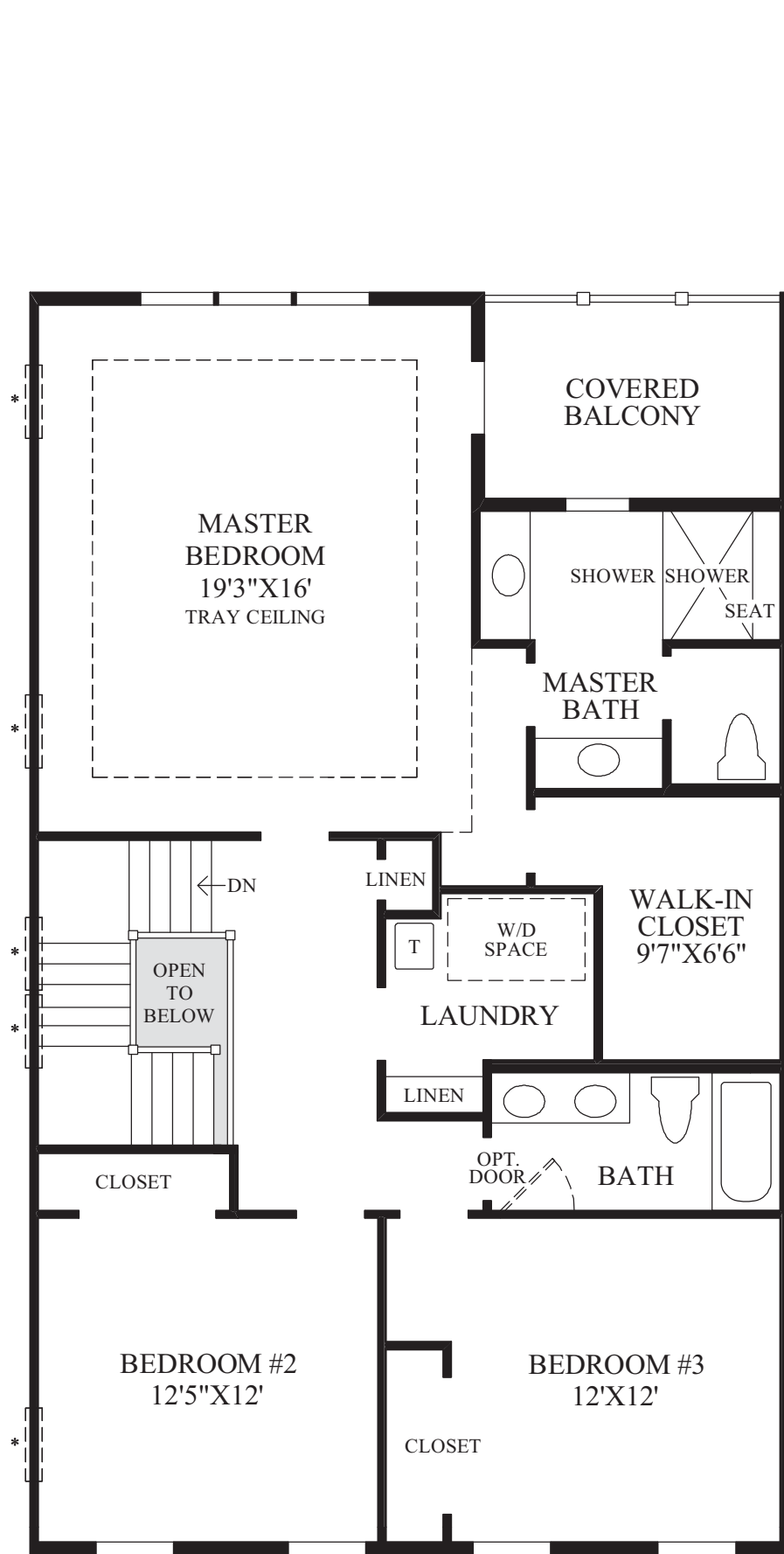
Lower Level



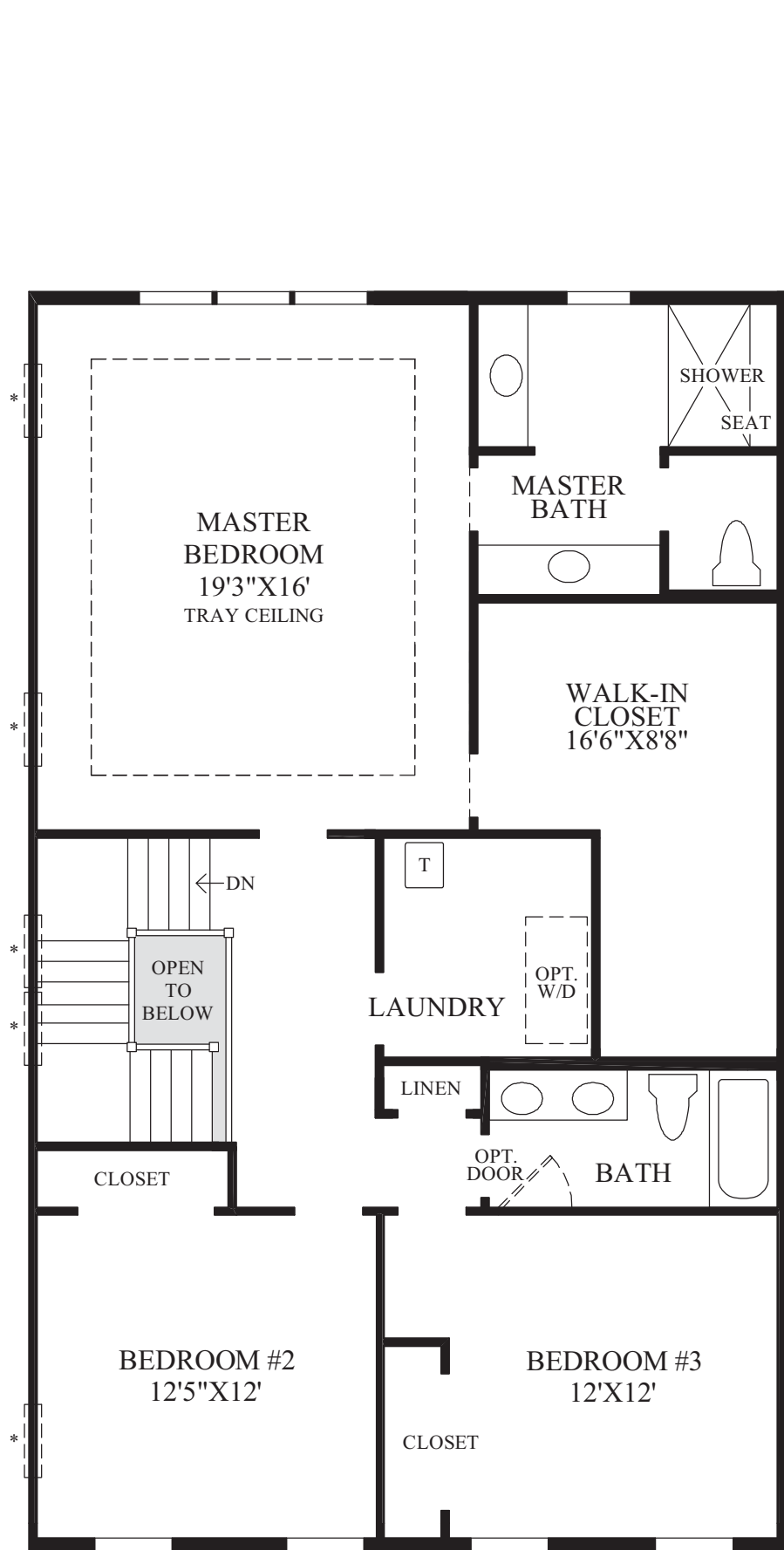
Living Level



SHOWN WITH OPTIONAL  
EXPANDED KITCHEN



Bedroom Level



SHOWN WITH OPTIONAL  
GRAND MASTER SUITE

THE NEWMAN HIGHLIGHTS

- The lower level of this home includes a foyer with stairs that lead to the living level, a two-car garage, and recreation room.
- The living level boasts an open floor plan that includes a combined living room and dining room, a well-designed kitchen with a large center island, a breakfast area, and a sunlit family room.
- The bedroom level is highlighted by the master bedroom which includes a tray ceiling, a large walk-in closet, and a private bath with dual vanities, a shower with a seat, and a private toilet area. The bedroom level also includes two additional bedrooms, a hall bath, and a convenient laundry.
- Nine-foot ceilings throughout the lower level, living level, and bedroom level.