



Santa Fe



Sonoran

# THE RIDGEWOOD

DRAFT

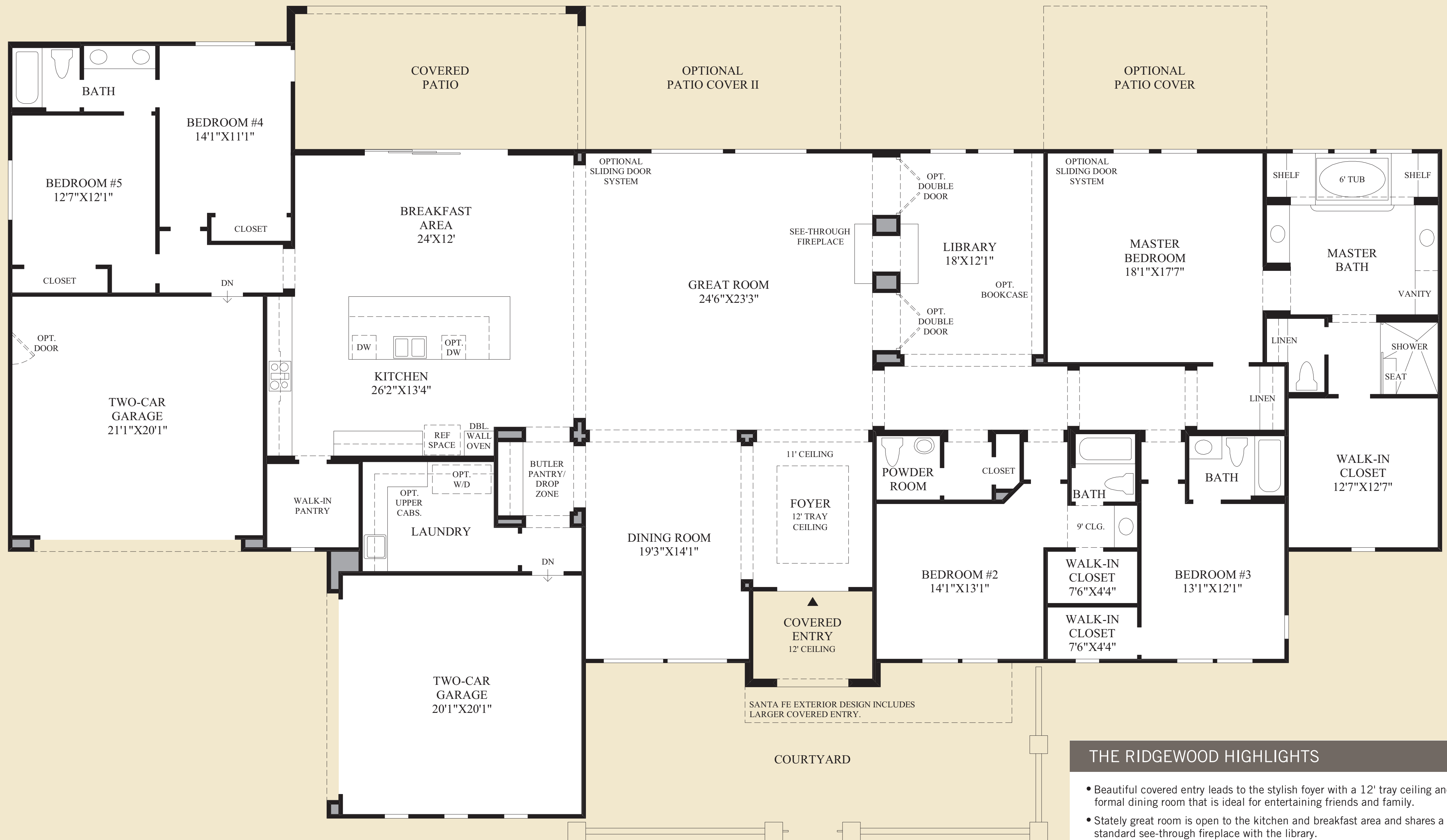
*Toll Brothers*  
America's Luxury Home Builder®



Tuscan



DRAFT



## THE RIDGEWOOD HIGHLIGHTS

- Beautiful covered entry leads to the stylish foyer with a 12' tray ceiling and formal dining room that is ideal for entertaining friends and family.
- Stately great room is open to the kitchen and breakfast area and shares a standard see-through fireplace with the library.
- Generous kitchen includes a center island with breakfast bar, walk-in pantry, and a breakfast area with 12' sliding doors to the standard covered patio.
- Elegant master bedroom features a luxurious master bath with dual vanities, six-foot soaking tub flanked by shelves, separate shower with seat, and an oversized walk-in closet.
- Additional highlights include a standard butler pantry and a generous laundry.

# Floor Plan

SONORAN EXTERIOR DESIGN SHOWN

DRAFT