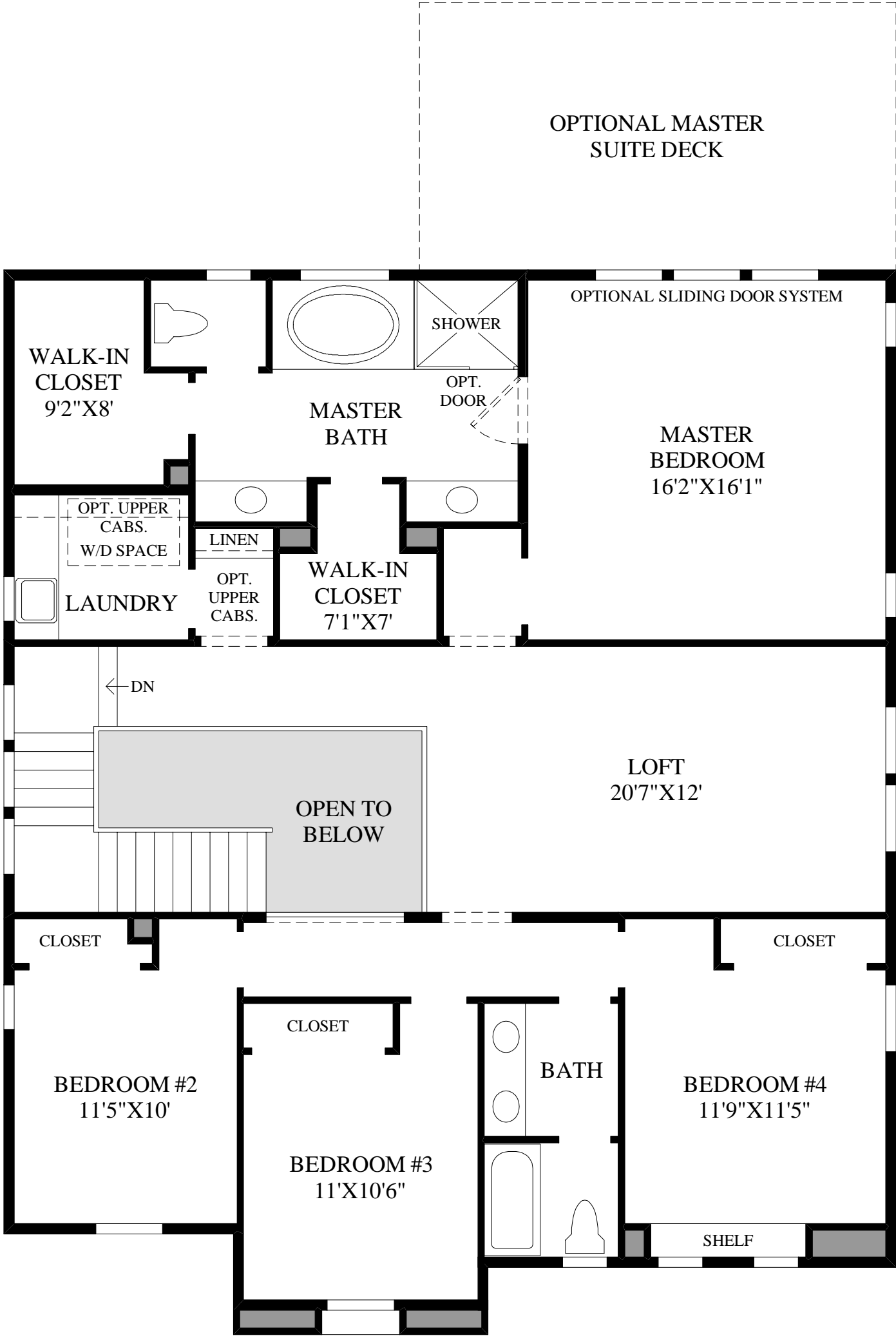
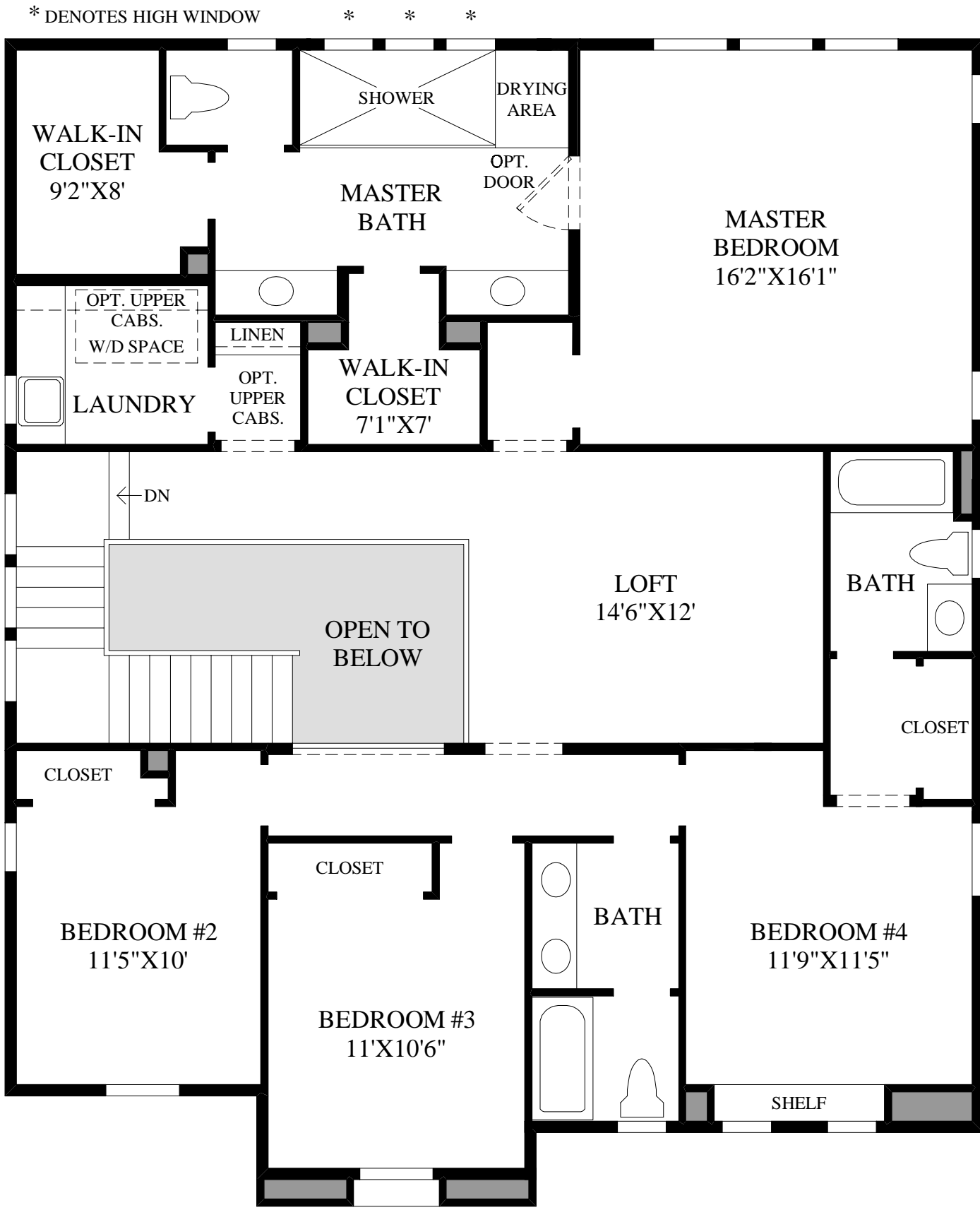


First Floor
SPANISH EXTERIOR DESIGN SHOWN



Second Floor



- SHOWN WITH:
- OPTIONAL LUXURIOUS MASTER BATH PACKAGE
 - OPTIONAL ADDITIONAL BATH

THE RIMINI HIGHLIGHTS

- A beautiful covered entry greets you upon arrival to this impressive home and opens up to an elegant foyer that reveals a desirable office.
- The superb kitchen offers a generous center island with a breakfast bar, a splendid walk-in pantry, and an adjacent dining room that is large enough to accommodate even the largest of family gatherings.
- Highlighting the spacious great room is a radiant array of windows that allows plenty of natural light to fill the home.
- An exquisite master bath that features a glass-enclosed shower, a soaking tub, separate vanities, a private water closet, and dual walk-in closets enhances the extravagant master bedroom.
- Additional highlights include a useful drop zone, a convenient powder room on the first floor, and a huge second-floor loft with overlooks to below.