

Tuscan

THE SAN AUGUSTINE

THE SAN AUGUSTINE | Interior



Kitchen

THE SAN AUGUSTINE | Exterior Designs



Berkshire

May be shown with optional features, including but not limited to stone-front accents.



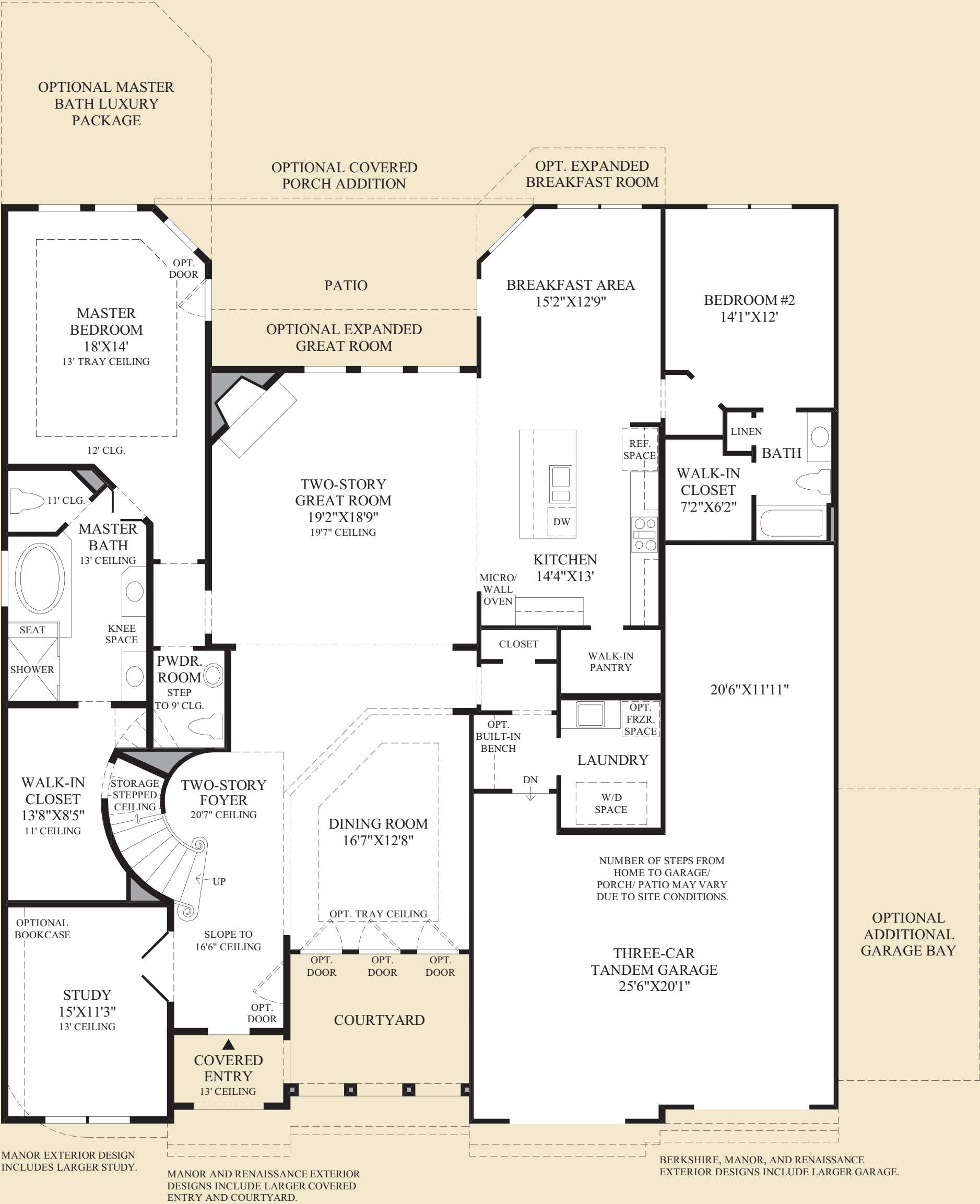
Manor

May be shown with optional features, including but not limited to stone-front accents.

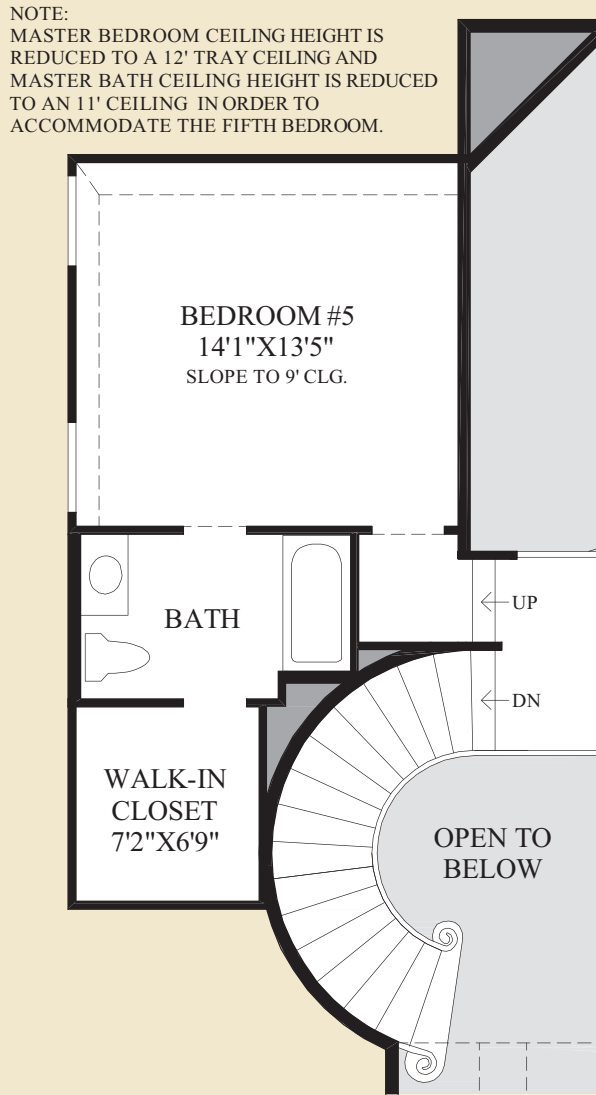


Renaissance

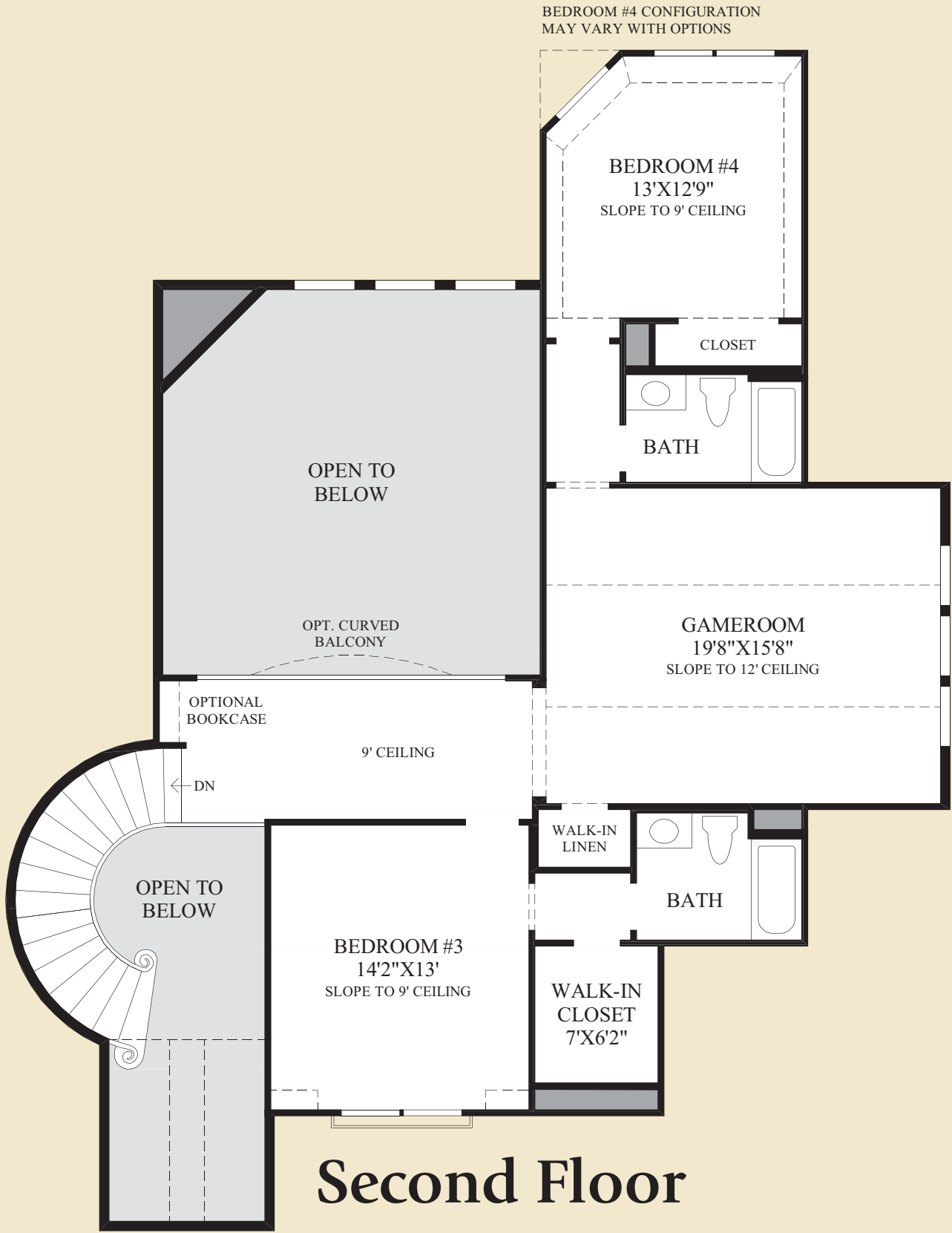
May be shown with optional features, including but not limited to stone-front accents.



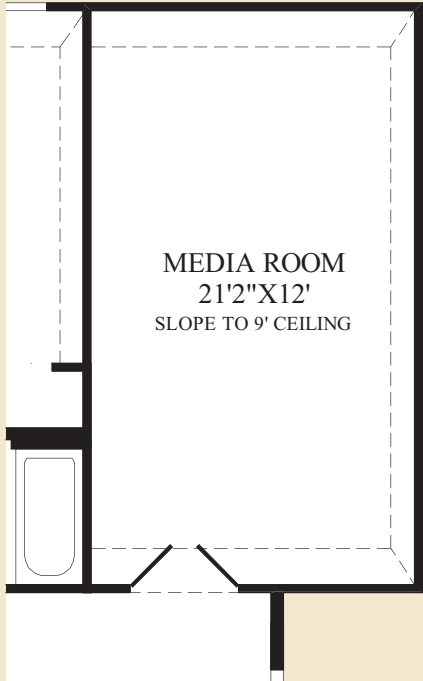
First Floor
TUSCAN EXTERIOR DESIGN SHOWN



SHOWN WITH OPTIONAL FIFTH BEDROOM



Second Floor



SHOWN WITH OPTIONAL MEDIA ROOM ADDITION

THE SAN AUGUSTINE HIGHLIGHTS

- The dramatic two-story foyer is accentuated by a stunning curved staircase and is open to the formal dining room.
- Enhancing the spacious great room is an elegant two-story ceiling, a radiant corner fireplace, and a beautiful bank of windows that overlooks the sizable patio.
- This beautifully designed kitchen includes an expansive center island with a breakfast bar, a large walk-in pantry, and an adjoining breakfast area.
- The extravagant master bedroom is highlighted by a graceful 13' tray ceiling, a remarkable walk-in closet, and a luxurious master bath including a dual-sink vanity, a glass-enclosed shower, a private water closet, and a luxurious soaking tub.
- Additional highlights include a generous second-floor gameroom, a desirable study with a double-door entry, and a secluded first-floor bedroom with a private bath and a walk-in closet.



Dining Room and Two-Story Foyer