



Caribbean

# THE SAN TROPEZ

## THE SAN TROPEZ | Interior



Family Room with Optional Fireplace and Niches

## THE SAN TROPEZ | Exterior Designs



Classic

All exterior color selections must be approved by the Architectural Review Board.



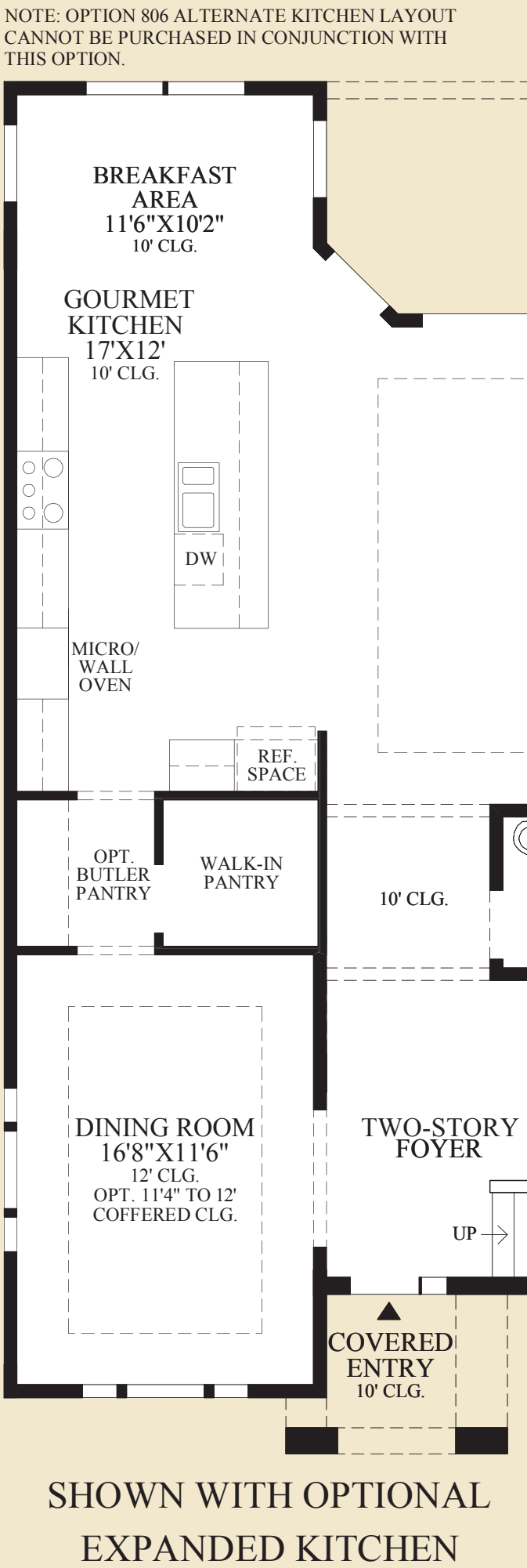
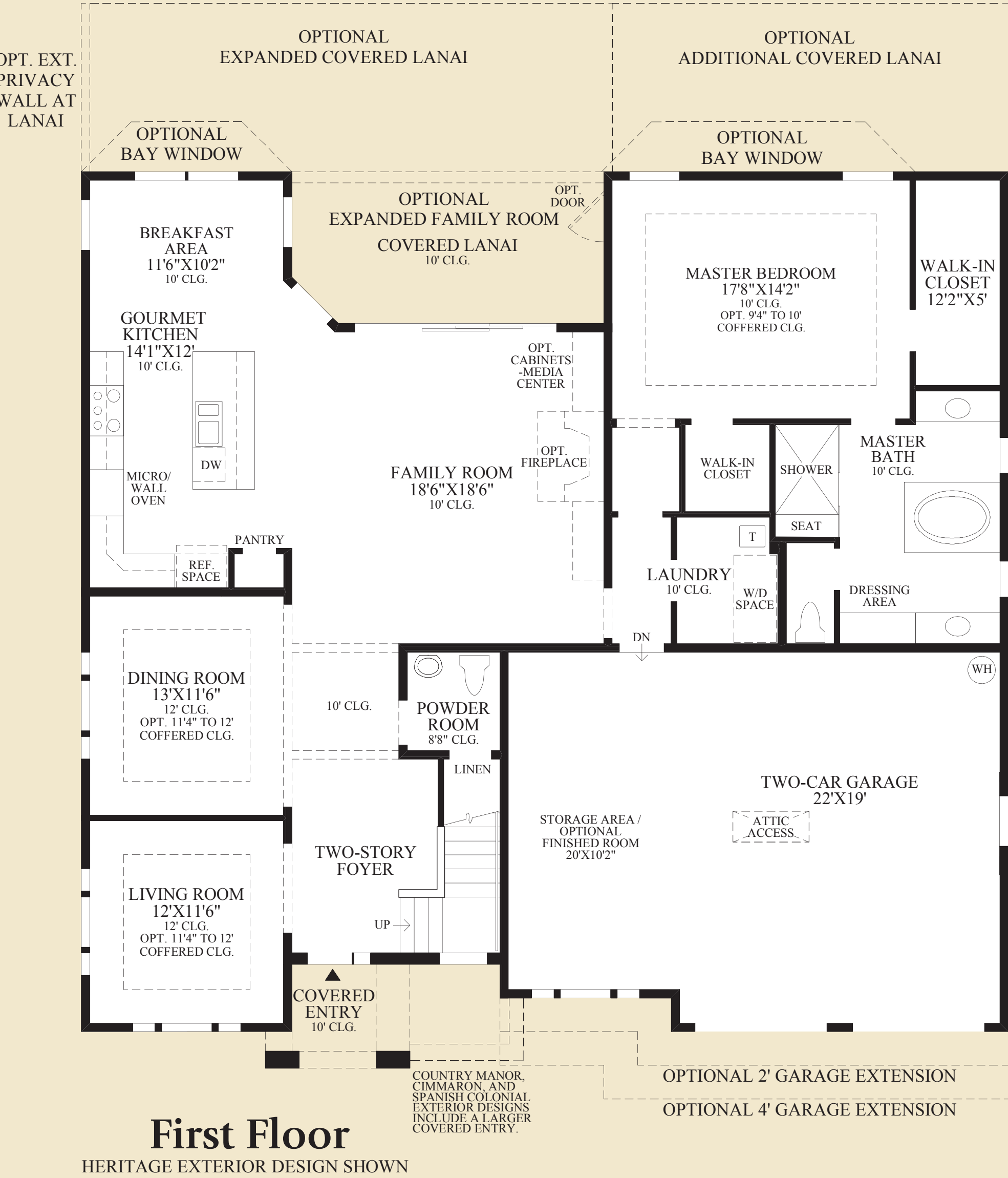
Coastal



Shingle

All exterior color selections must be approved by the Architectural Review Board.





THE SAN TROPEZ HIGHLIGHTS

- This impressive home boasts a welcoming two-story foyer that leads to the elegant living and dining areas and is accented by a lovely open staircase.
- The well-equipped kitchen with separate pantry and large center island is adjacent to a well-lit breakfast area and an expansive family room with direct access to the covered lanai.
- The master bedroom features two walk-in closets and an opulent master bath with dual vanities, Roman tub, separate shower, and a private water closet.
- Upstairs, additional bedrooms and bathrooms surround a large versatile loft that could double as a game room. This family-oriented home is further enhanced by a conveniently-located powder room and separate laundry.

First Floor	1925 sq. ft.
Second Floor	1008 sq. ft.
<hr/>	
Air Conditioned Living Area	2933 sq. ft.
Covered Lanai	163 sq. ft.
Covered Entry	46 sq. ft.



Living Room