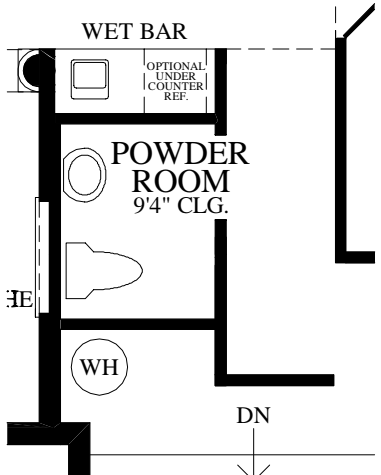


## Floor Plan

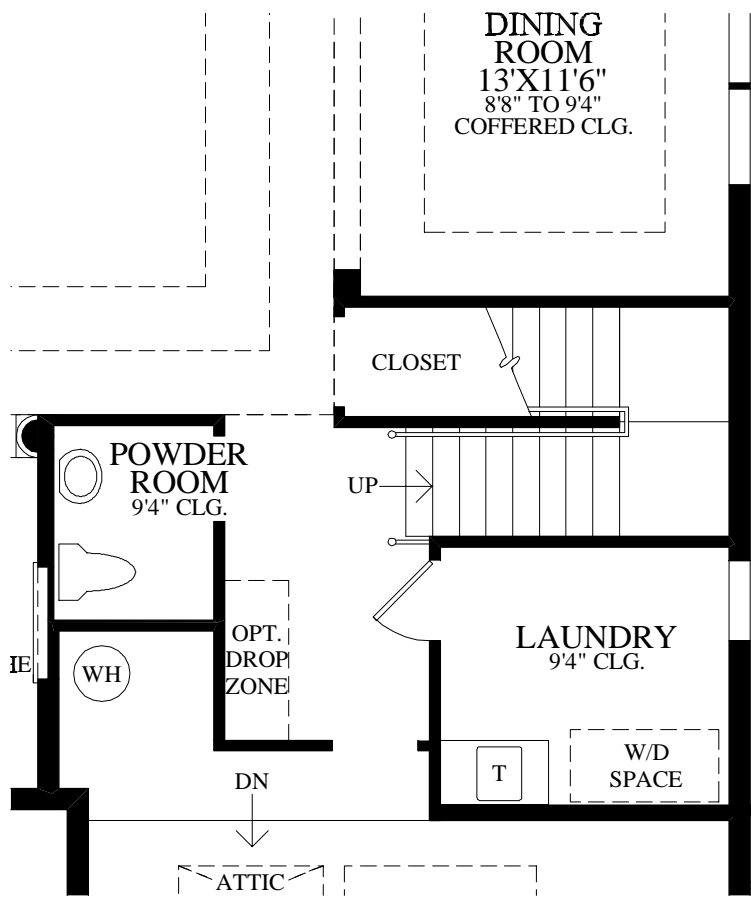
CHATEAU EXTERIOR DESIGN SHOWN



NOTE: OPTION 008 DRY BAR AND 263133 ADDITIONAL CLOSET WITH BI-PASS DOORS CANNOT BE PURCHASED IN CONJUNCTION WITH THIS OPTION.

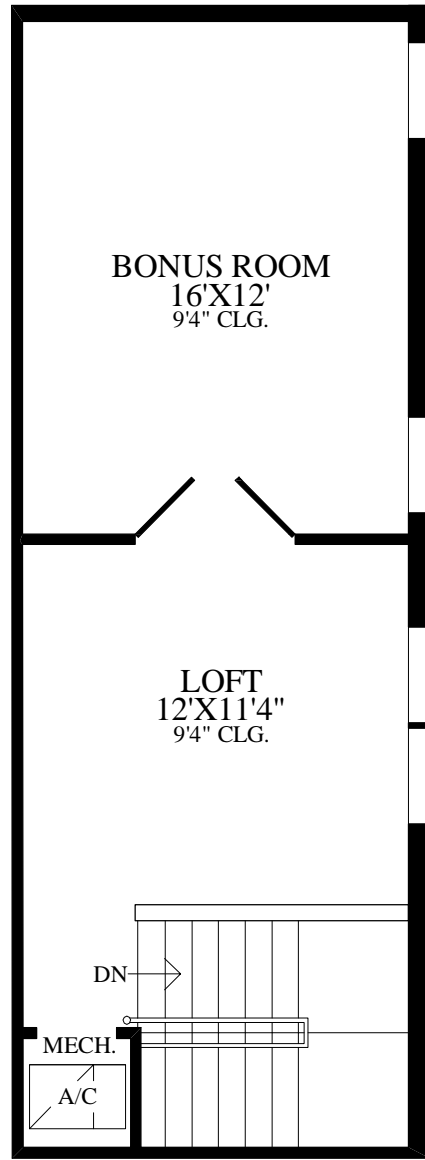
NOTE: THIS OPTION FEATURES AN ADDITIONAL 10 SQ. FT. OF AIR CONDITIONED LIVING AREA.

SHOWN WITH OPTIONAL WET BAR



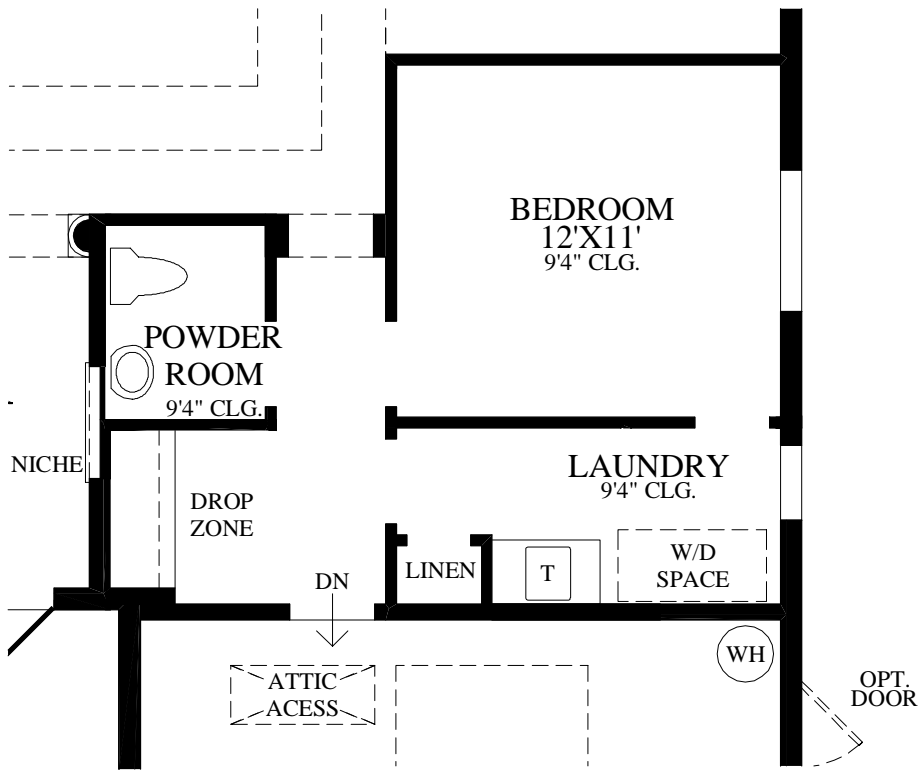
SHOWN WITH STAIRS TO OPTIONAL BONUS ROOM

NOTE: THIS OPTION FEATURES AN ADDITIONAL 402 SQ. FT. OF AIR CONDITIONED LIVING AREA.



SHOWN WITH OPTIONAL BONUS ROOM

NOTE: OPTION 029 BEDROOM IN LIEU OF STUDY AND 047 EXPANDED KITCHEN CANNOT BE PURCHASED IN CONJUNCTION WITH THIS OPTION.



NOTE: THIS OPTION FEATURES AN ADDITIONAL 42 SQ. FT. OF AIR CONDITIONED LIVING AREA.

NOTE: OPTION 263082 DROP ZONE WITH CABINETRY CANNOT BE PURCHASED IN CONJUNCTION WITH THIS OPTION.

SHOWN WITH OPTIONAL BEDROOM IN LIEU OF STUDY AND OPTIONAL DROP ZONE



OPTIONAL DROP ZONE

## THE SARANAC HIGHLIGHTS

- The covered entry leads to a foyer that opens up to an expansive great room and formal dining room, both with coffered ceilings.
- The gourmet kitchen opens to both the dining and breakfast areas with a pass-thru to the great room.
- The spacious master bedroom suite features a coffered ceiling, two walk-in closets, and a master bathroom with Roman tub, separate shower, dual vanities, and private water closet.
- Additional features include a study with double french doors opening to the great room, conveniently-located powder room, spacious laundry room, and separate wing with additional bedrooms and bathroom.

Air Conditioned Living Area	2545 sq. ft.
Covered Lanai	169 sq. ft.
Covered Entry	85 sq. ft.



MASTER BEDROOM