



Provincial

THE SAVIERO | Exterior Designs



Versailles

THE SAVIERO | Interior



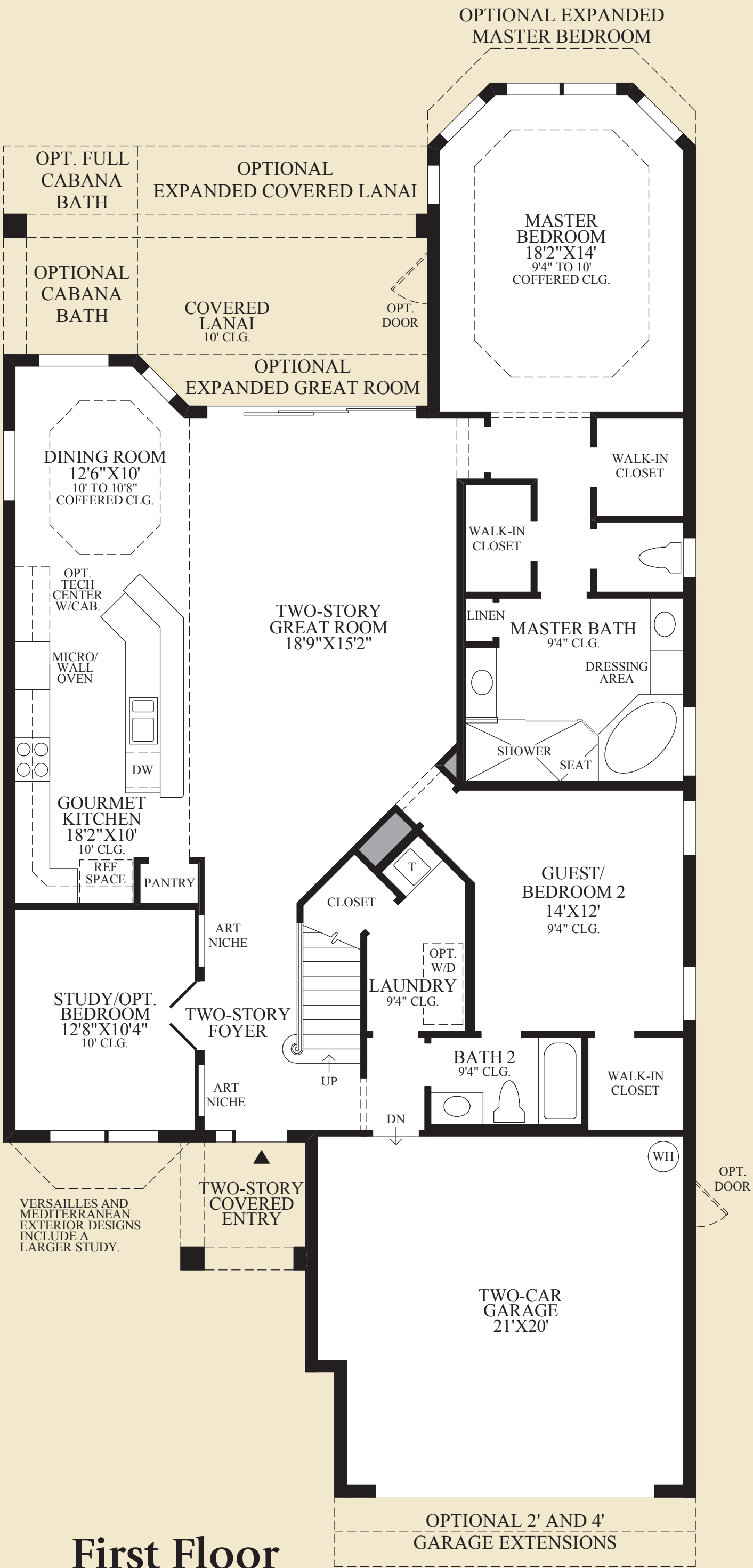
Gourmet Kitchen with Optional Tech Center Cabinets



Mediterranean

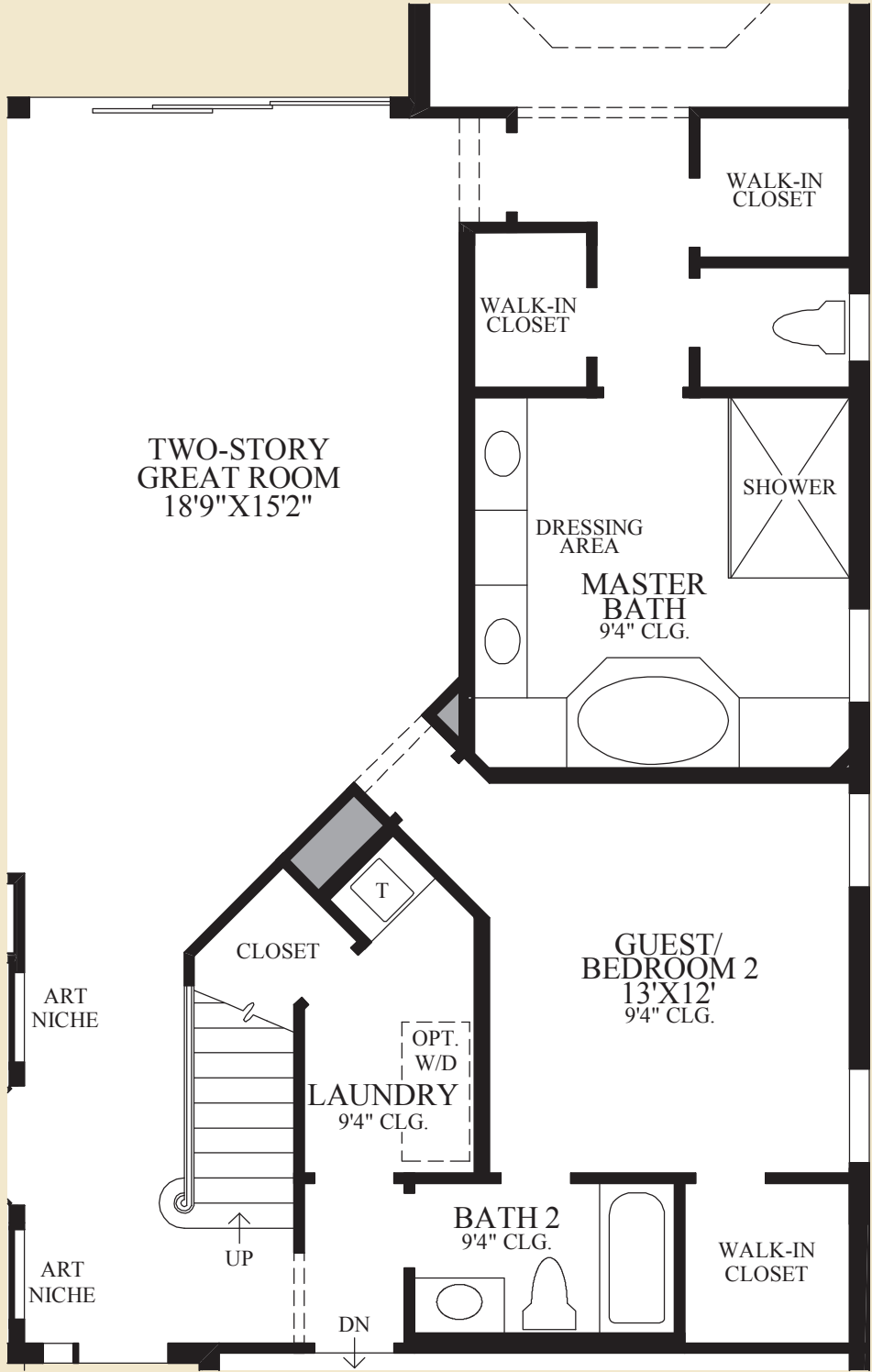


Traditional

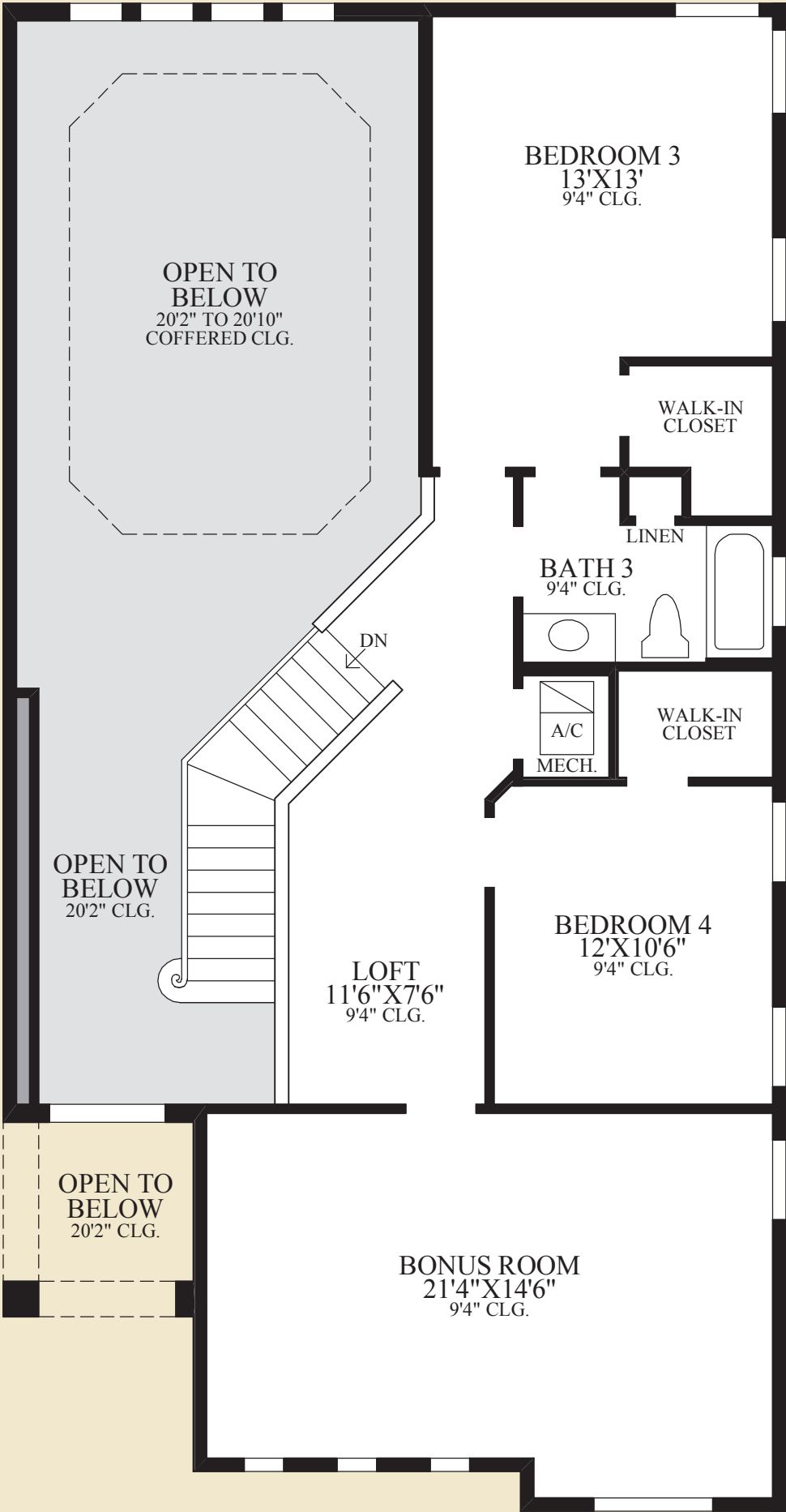


First Floor

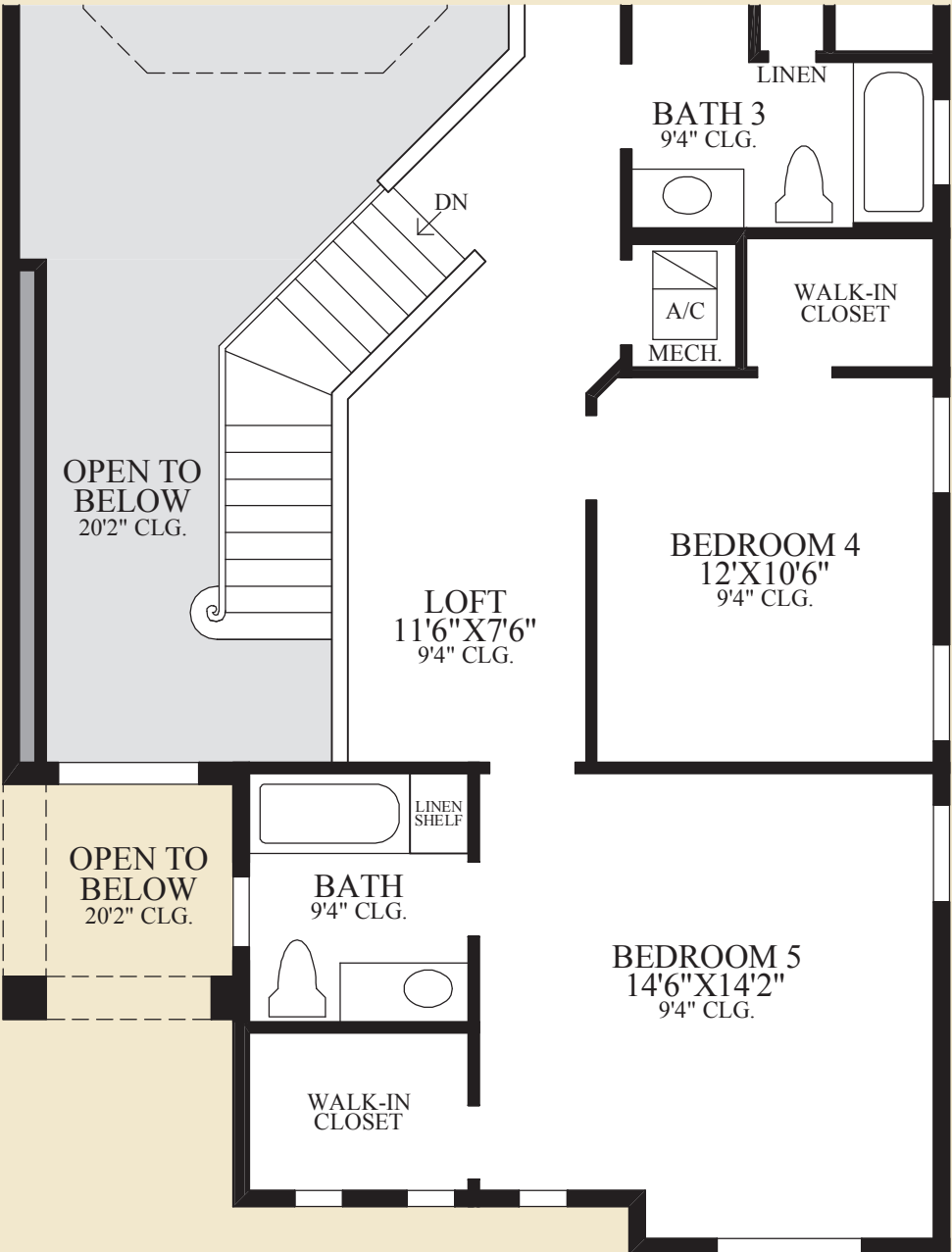
PROVINCIAL EXTERIOR DESIGN SHOWN



SHOWN WITH OPTIONAL EXPANDED MASTER BATH



Second Floor



SHOWN WITH OPTIONAL FIFTH BEDROOM

THE SAVIERO HIGHLIGHTS

- The two-story foyer of this home offers direct access to the study with double doors as well as stunning views of the graceful turned stairs.
- The open floor plan is an ideal space for entertaining and family gatherings and includes an expansive two story great room with direct access to the covered lanai, a kitchen with a large center island, and an adjacent dining room.
- The master bedroom includes two walk-in closets and a private bath with dual vanities, a corner tub, a separate shower with seat, and a private toilet area.

First Floor	1964 sq. ft.
Second Floor	986 sq. ft.
Air Conditioned Living Area	2950 sq. ft.
Covered Lanai	240 sq. ft.
Covered Entry	53 sq. ft.



Master Bedroom with Optional Exterior Door