



Provincial

## THE SERINO | Exterior Designs



Italian Villa

May be shown with optional features, including but not limited to designer garage door.



Tuscan

May be shown with optional features, including but not limited to designer front door and garage door.



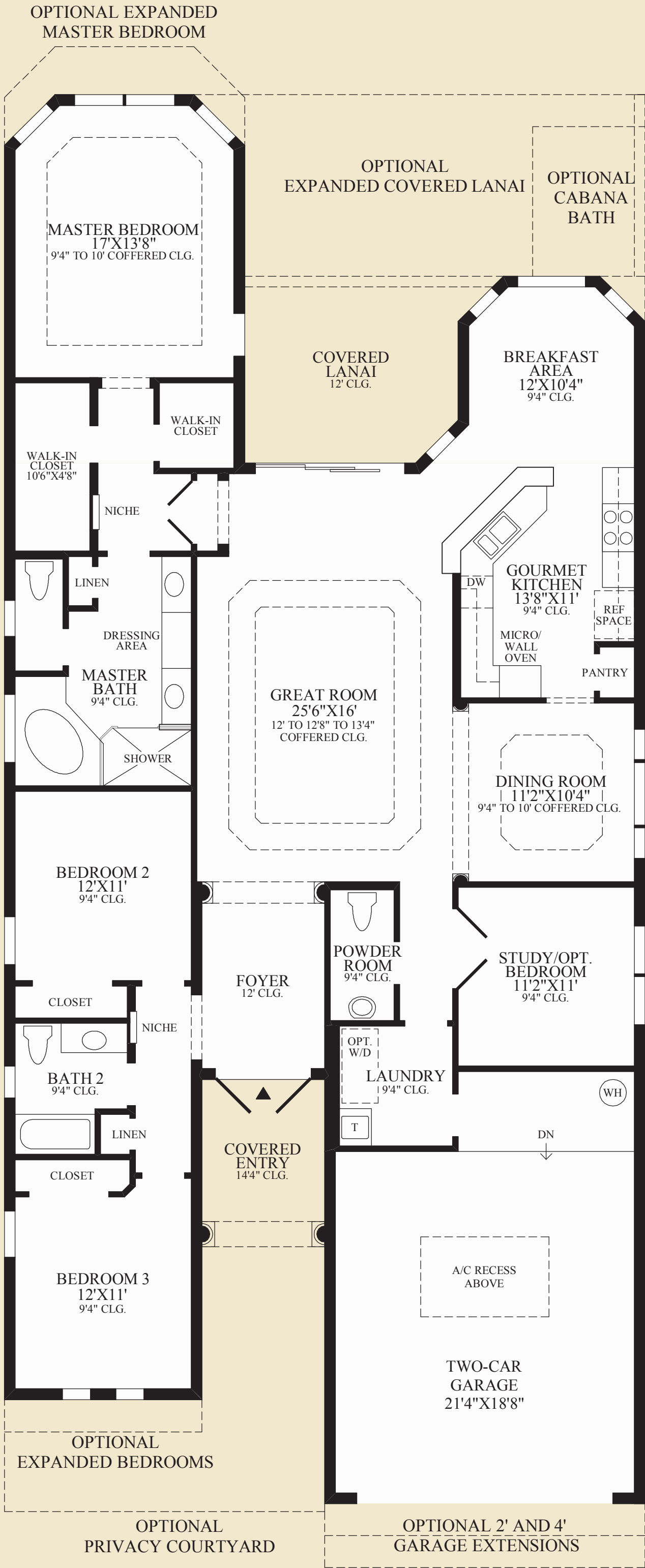
Optional Expanded Master Bathroom



Bordeaux

May be shown with optional features, including but not limited to designer garage door.





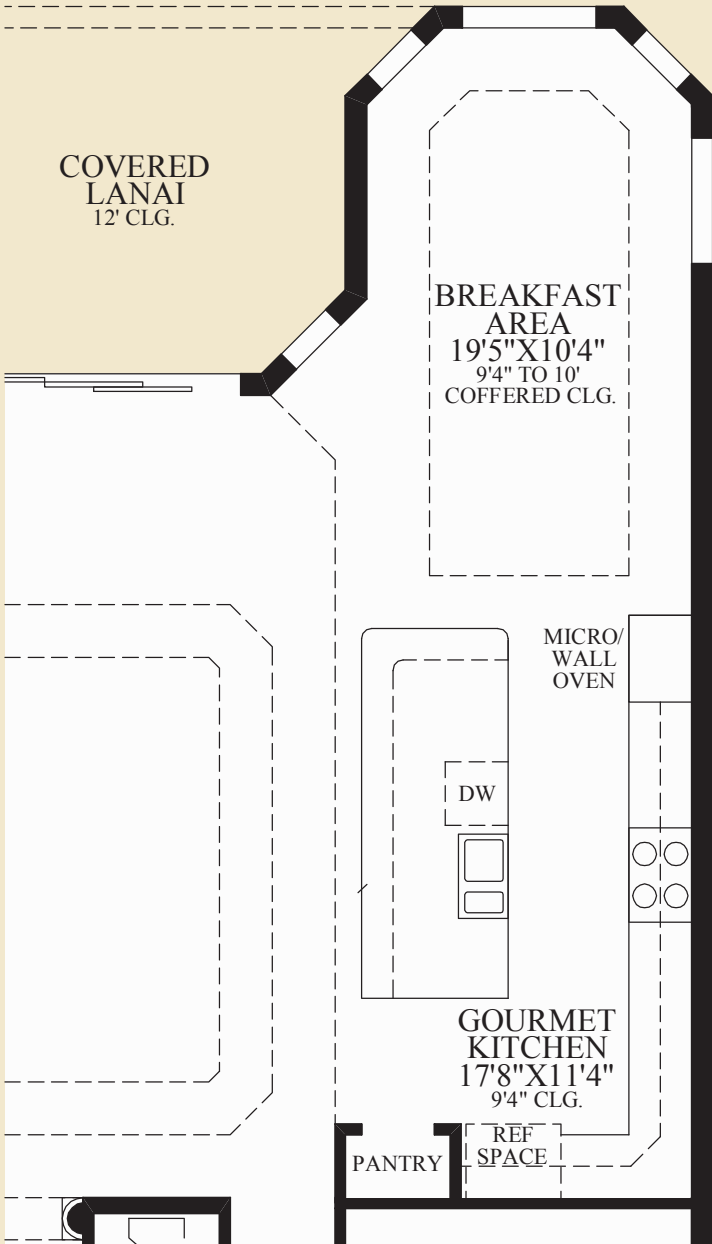
THE SERINO HIGHLIGHTS

- The formal foyer features elegant columns which mimic the entry and leads to the expansive great room with coffered ceiling and direct access to the covered lanai.
- The kitchen with pantry is centrally located between the sunlit breakfast area and the dining room with columned entry and coffered ceiling.
- The master bedroom is complete with coffered ceiling, two walk-in closets, and private bath with dual-sink vanity, private toilet area, corner tub, and separate shower.
- This home also features additional bedrooms and baths, a privately located study, and separate laundry room.

Air Conditioned Living Area	2285 sq. ft.
Covered Lanai	156 sq. ft.
Covered Entry	79 sq. ft.



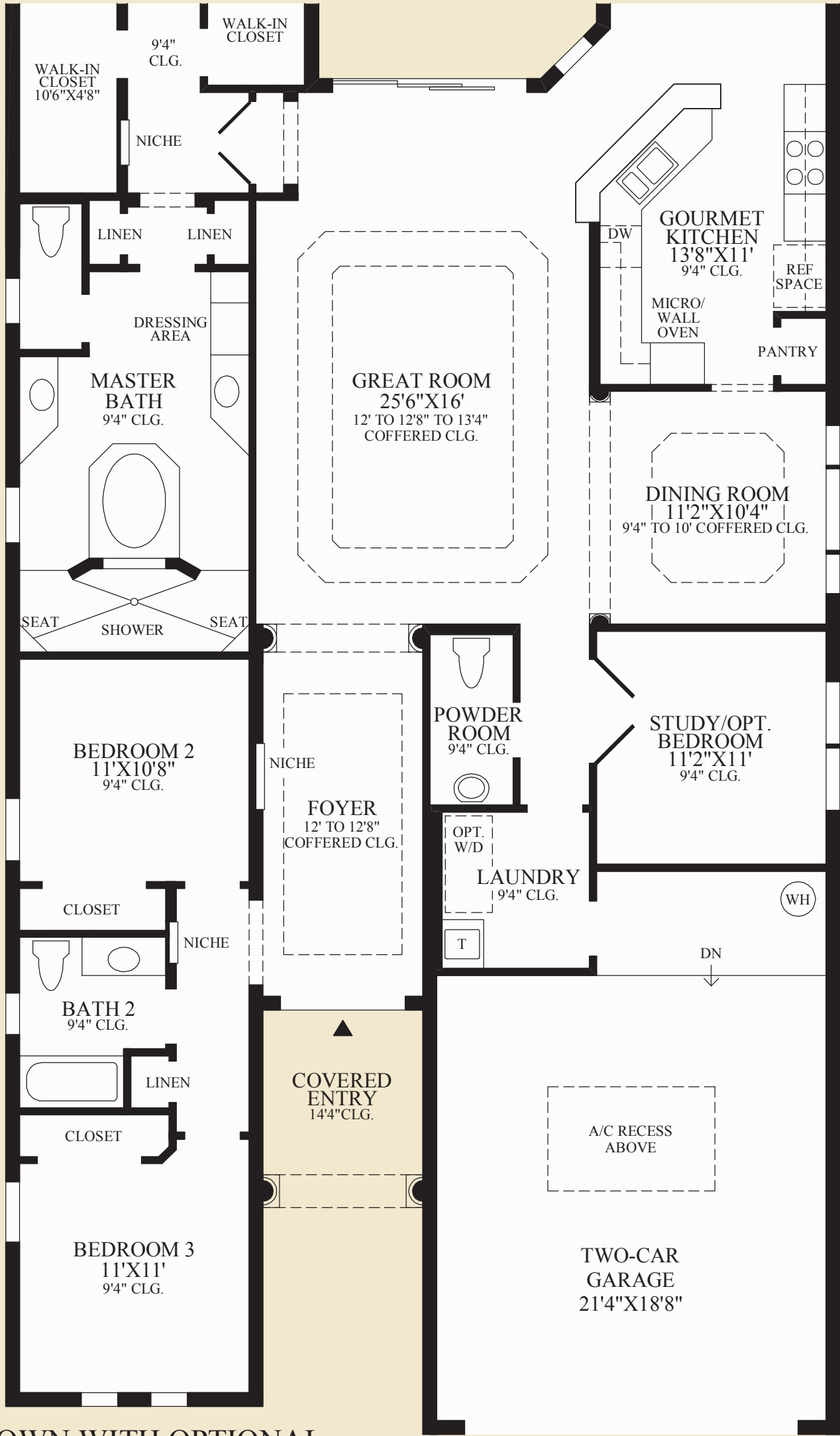
Gourmet Kitchen



SHOWN WITH OPTIONAL EXPANDED KITCHEN



SHOWN WITH OPTIONAL BEDROOM IN LIEU OF STUDY



SHOWN WITH OPTIONAL EXPANDED MASTER BATHROOM

Floor Plan

MEDITERRANEAN EXTERIOR DESIGN SHOWN