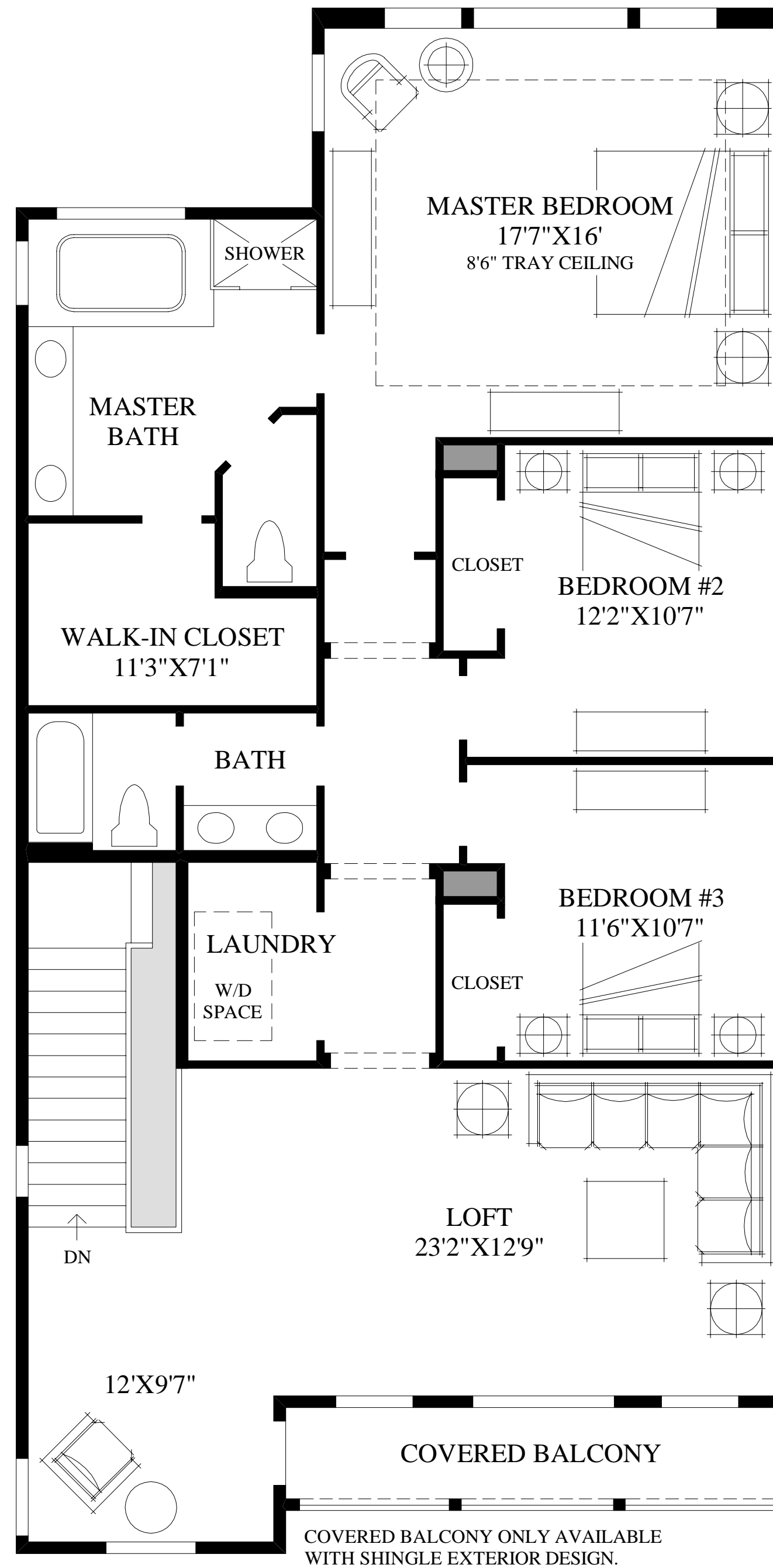


First Floor

SHINGLE EXTERIOR DESIGN SHOWN



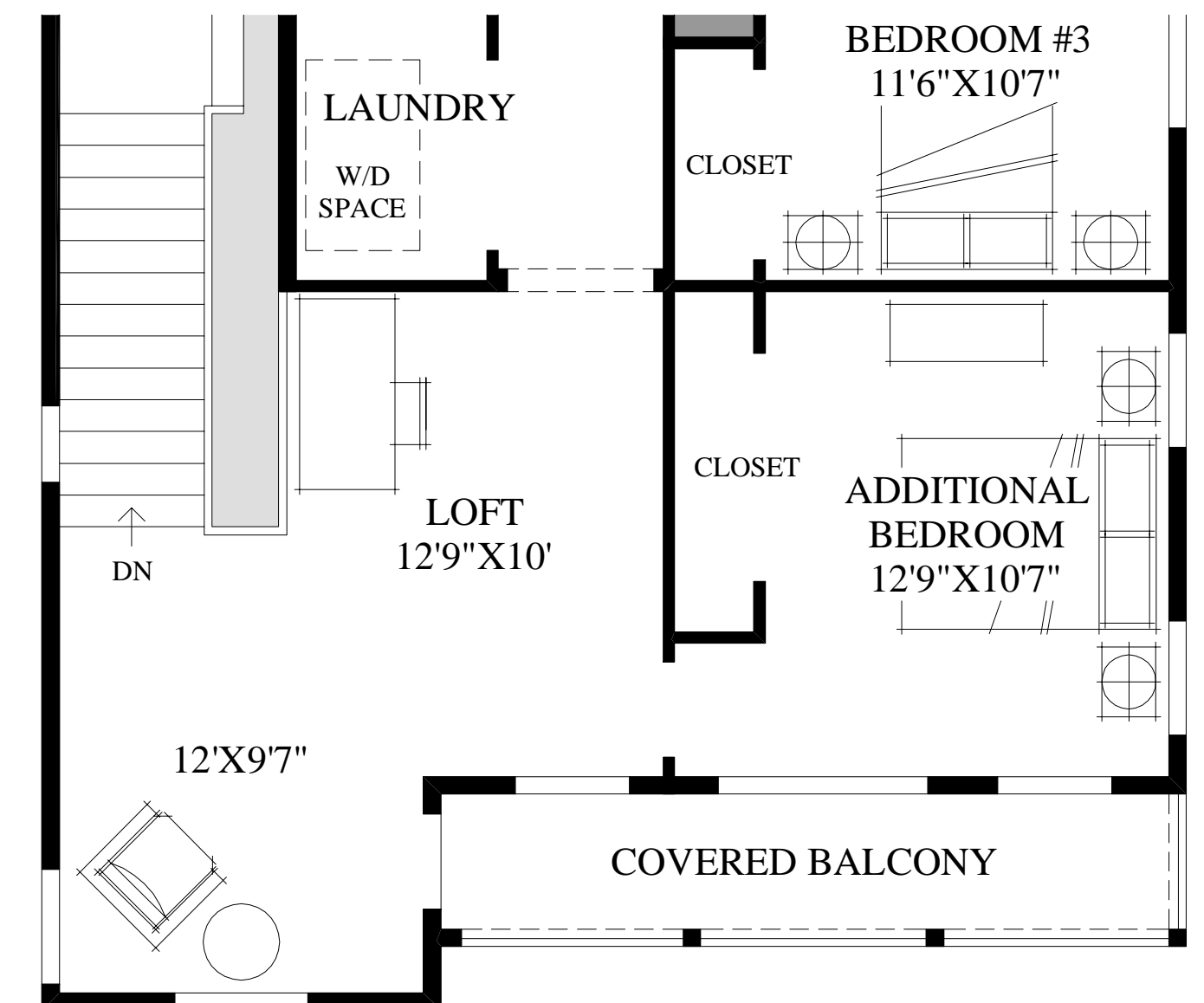
Second Floor

THE SHERMAN HIGHLIGHTS

- An eye-catching covered entry adds curb appeal and welcomes you into this well-designed home.
- The open kitchen has convenient access to both the adjacent dining room and the desirable covered patio, creating the ideal setting for hosting family and friends.
- Complementing the superb great room are several delightful window arrangements and a cozy fireplace providing comfort and elegance.
- Ideal for multi-generation entertaining, a large second-floor loft provides an additional entertainment space that is central to the upstairs bedrooms.
- A sunlit window arrangement and exquisite tray ceiling add charm to the fantastic master bedroom, which is further enhanced by the superb master bath that features a soaking tub, a luxurious shower, a dual-sink vanity, and a sizeable walk-in closet.



MASTER BATH



SHOWN WITH OPTIONAL
ADDITIONAL BEDROOM