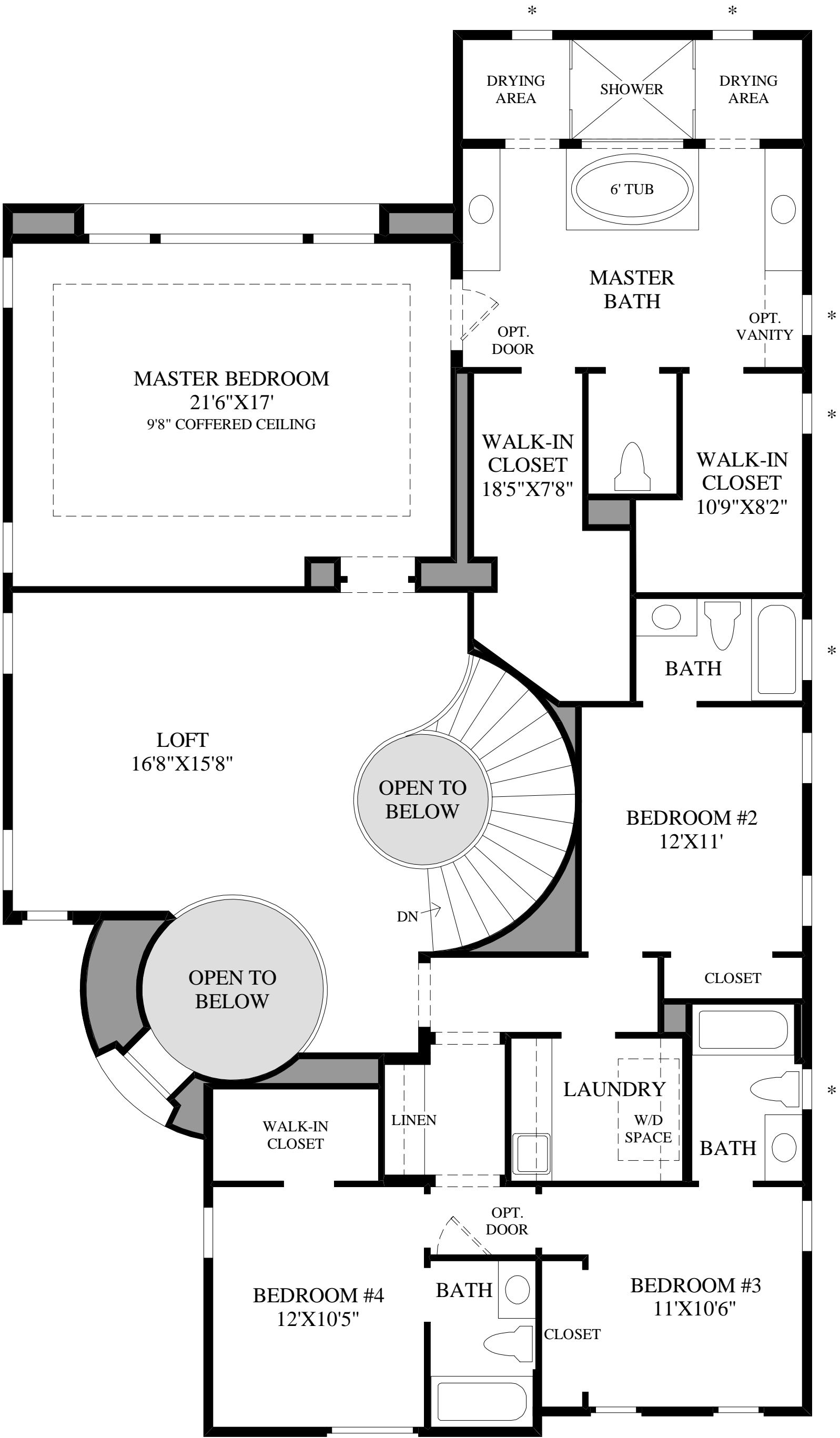


First Floor
TUSCAN EXTERIOR DESIGN SHOWN



Second Floor

THE STANWICK HIGHLIGHTS

- An impressive rotunda-style foyer welcomes you into this beautiful home while providing a clear line of sight to the graceful curved staircase beyond.
- This bright and open floor plan unifies the main living spaces while boasting several naturally lit window arrangements that fill the home with light.
- Prepare meals with ease from the well-appointed kitchen, complete with a walk-in pantry and a huge center island with a wraparound breakfast bar.
- Enhancing the spacious master bedroom is an elegant coffered ceiling, a well-sized walk-in closet, and a spa-like master bath that showcases a large soaking tub and glass-enclosed shower.
- Additional highlights include a versatile first-floor bedroom, a generous luxury outdoor living space with a cozy fireplace, and an appealing loft that is central to the upstairs bedrooms.