

THE SUNDANCE | Exterior Designs



High Plains



Desert Prairie

THE SUNDANCE

THE SUNDANCE | Interior



Master Bath



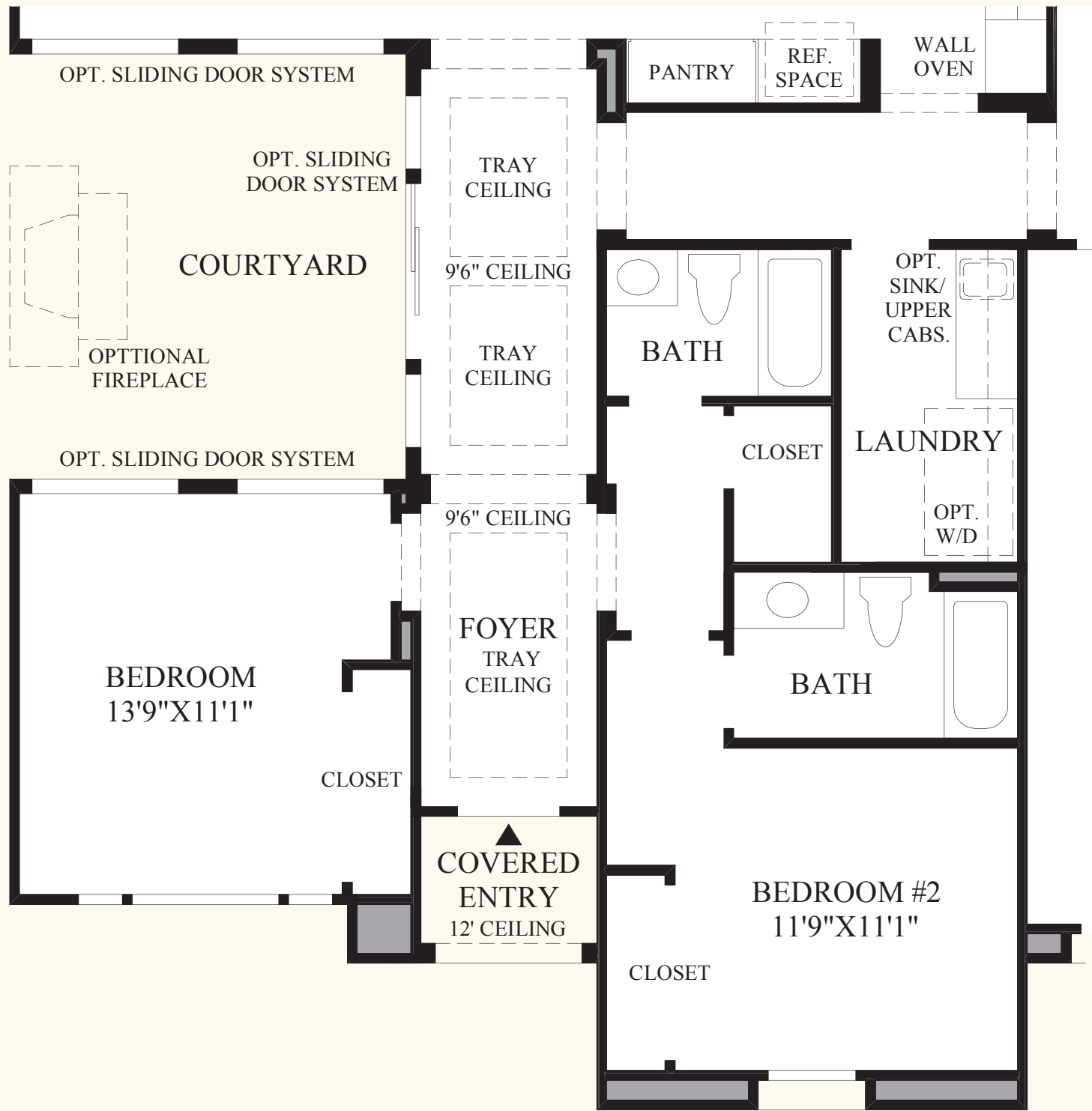
Desert Contemporary

THE SUNDANCE HIGHLIGHTS

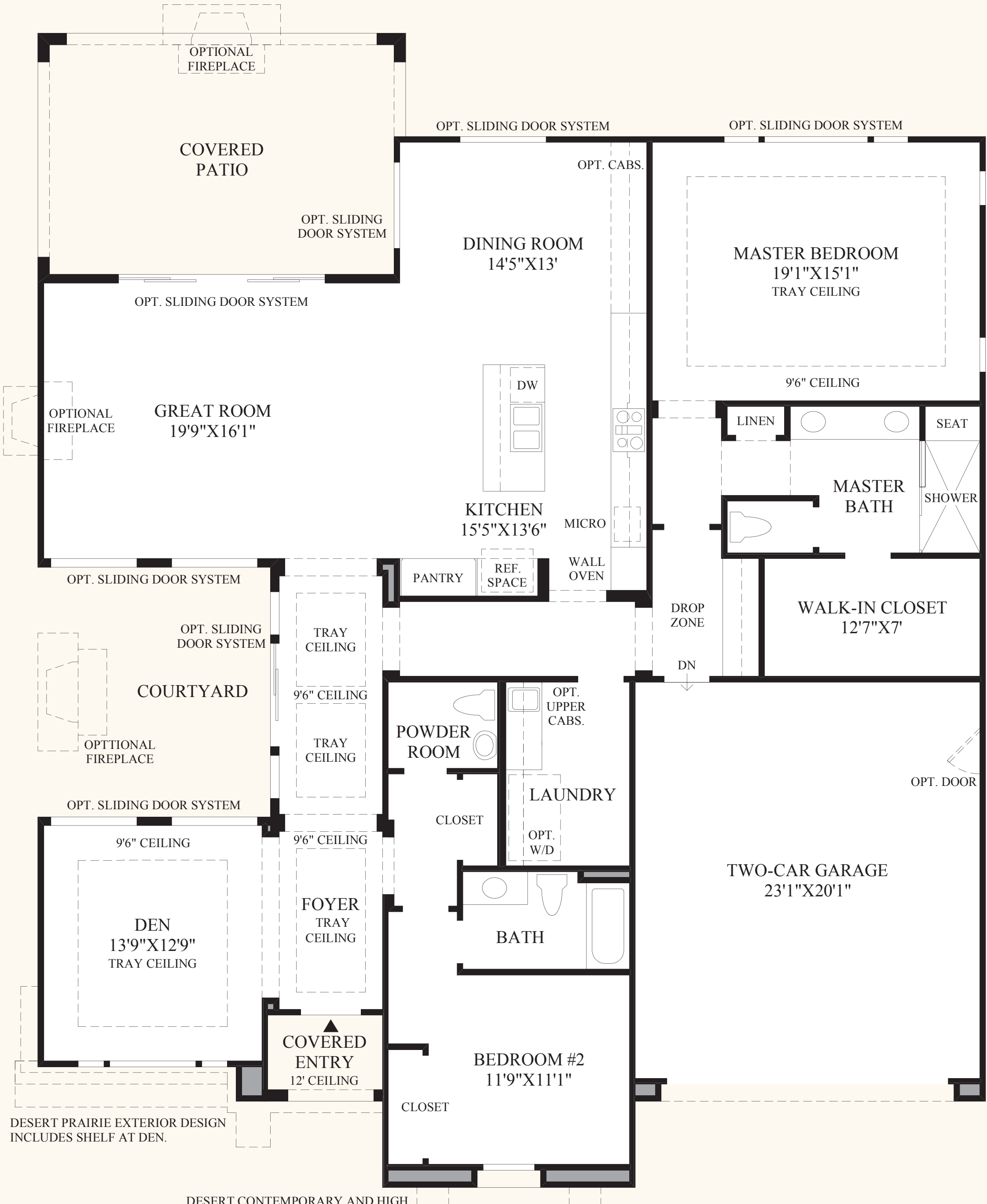
- An inviting covered entry adds curb appeal as it welcomes guests.
- The elegant foyer boasts a tray ceiling and provides an exciting and warm entrance to the home.
- A beautiful den offers views to the courtyard through expansive windows allowing natural light to fill the room.
- An intimate courtyard creates a tranquil outdoor escape, adding beauty to the home.
- The generous kitchen opens into the enormous great room and cozy dining room.
- Easily entertain family and friends from the spacious great room which opens up to the impressive covered patio and the rear yard.
- The master bedroom includes a luxurious master bath, ample closet space, and views to the rear yard through a stately bank of windows.
- Additional amenities include 10' standard ceilings throughout the first floor.



Master Bedroom with Optional Sliding Door System and Custom Tray Ceiling



SHOWN WITH OPTIONAL  
ADDITIONAL BEDROOM ILO DEN



DESERT CONTEMPORARY AND HIGH  
PLAINS EXTERIOR DESIGNS INCLUDE  
SHELF AT DEN AND BEDROOM #2.

**Floor Plan**  
MOUNTAIN EXTERIOR DESIGN SHOWN  
(MOUNTAIN NOT OFFERED AT REGENCY AT SUMMERLIN,  
SEE SALES REPRESENTATIVE FOR DETAILS.)