



Contemporary

THE TOPAZ

Toll Brothers
AMERICA'S LUXURY HOME BUILDER®

THE TOPAZ | Exterior Designs



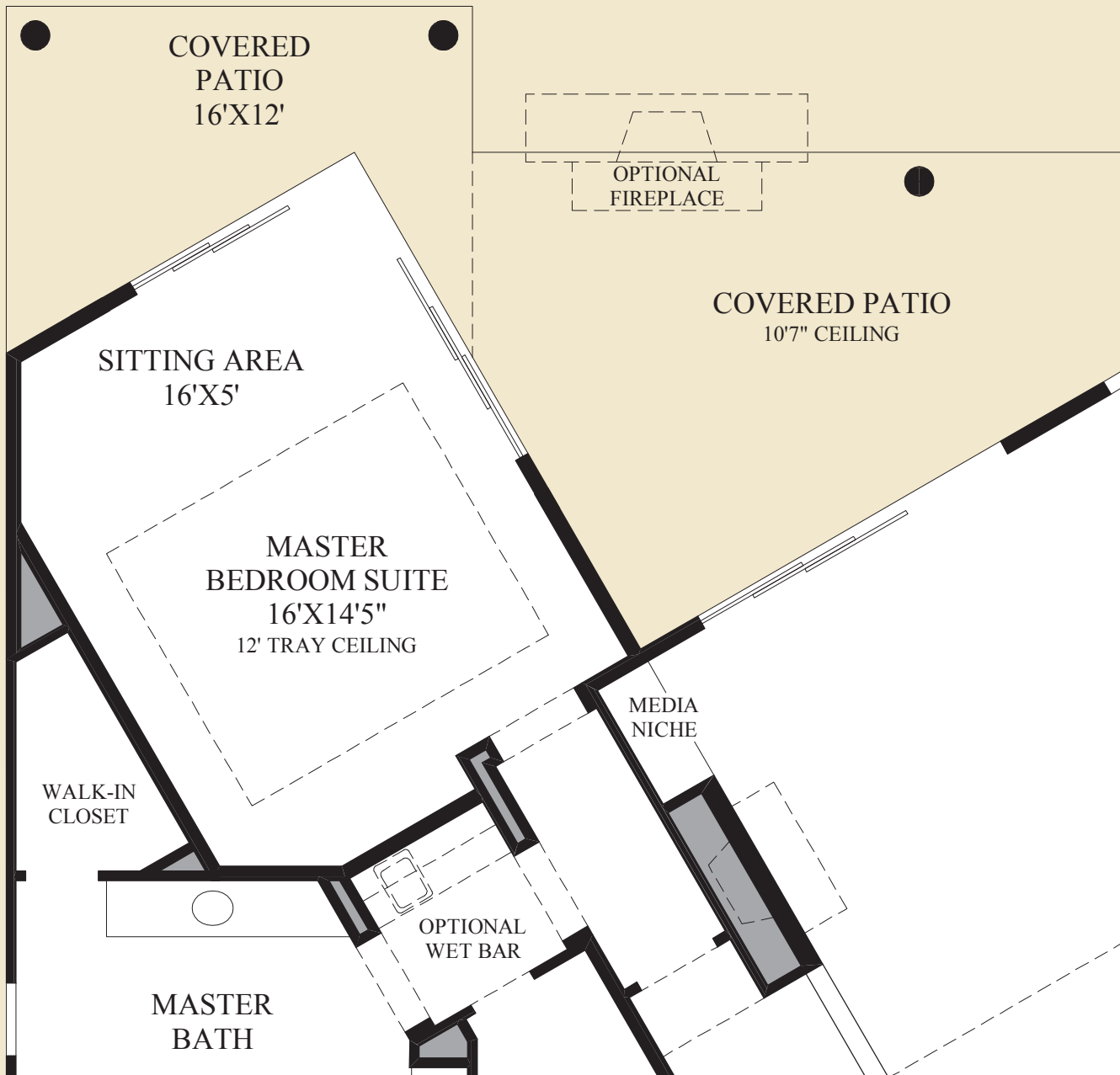
Desert Contemporary

May be shown with optional features, including but not limited to designer garage doors. Paver driveways included as standard.

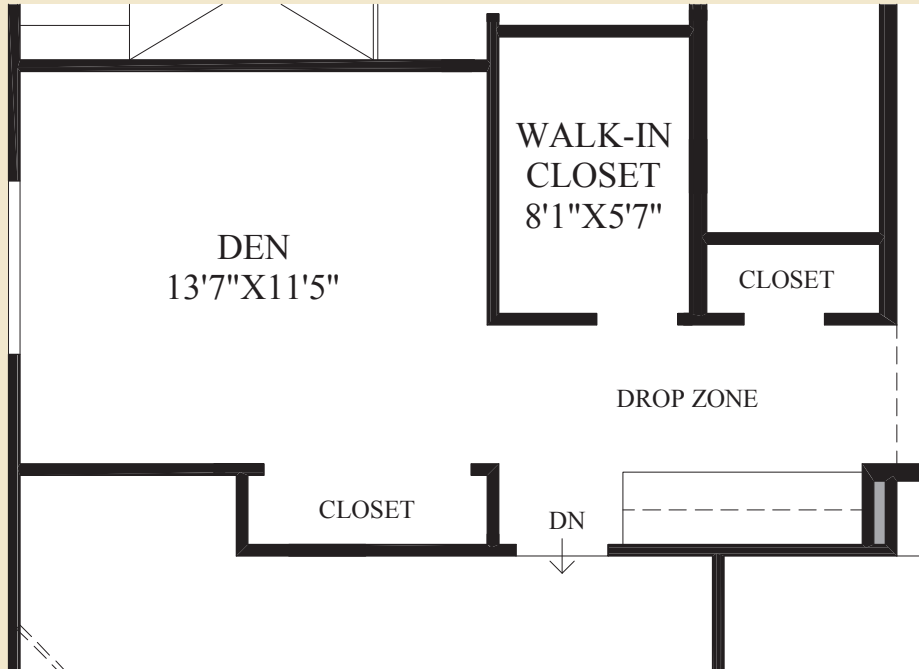


High Plains

May be shown with optional features, including but not limited to designer garage doors. Paver driveways included as standard.



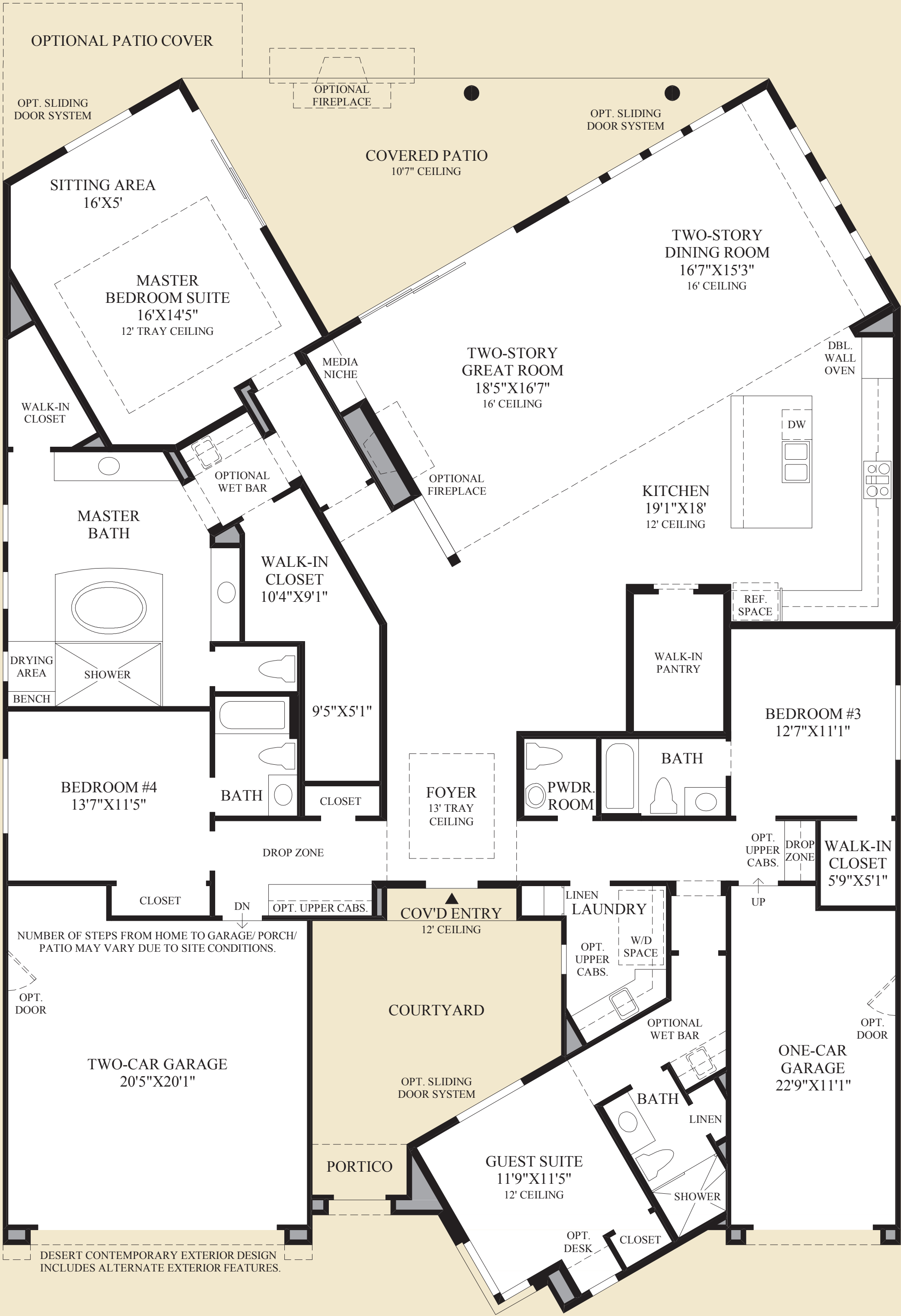
SHOWN WITH OPTIONAL CORNER MULTI SLIDE DOOR WITH PATIO COVER



SHOWN WITH OPTIONAL DEN IN LIEU OF STANDARD BEDROOM

THE TOPAZ HIGHLIGHTS

- A stately portico opens up to an intimate courtyard which leads to a delightful open floor plan that boasts 10' ceilings throughout.
- Easily prepare meals from the well-equipped kitchen which features ample counter space, a walk-in pantry, and a sizable center island that incorporates a breakfast bar for informal dining.
- Ideal for entertaining, this home unifies the formal dining room and the spacious great room in a grand two-story space that offers a sliding door system to the rear covered patio.
- This master bedroom suite is complete with an elevated tray ceiling, a desirable sitting area, two walk-in closets, and a luxurious master bath that showcases a sensational walk-in shower with a drying area and bench.
- Additional highlights include several window displays that fill the home with natural light, a private bath for each secondary bedroom, and a versatile guest suite with views of the interior courtyard.



Floor Plan