



Mountain



Farmhouse

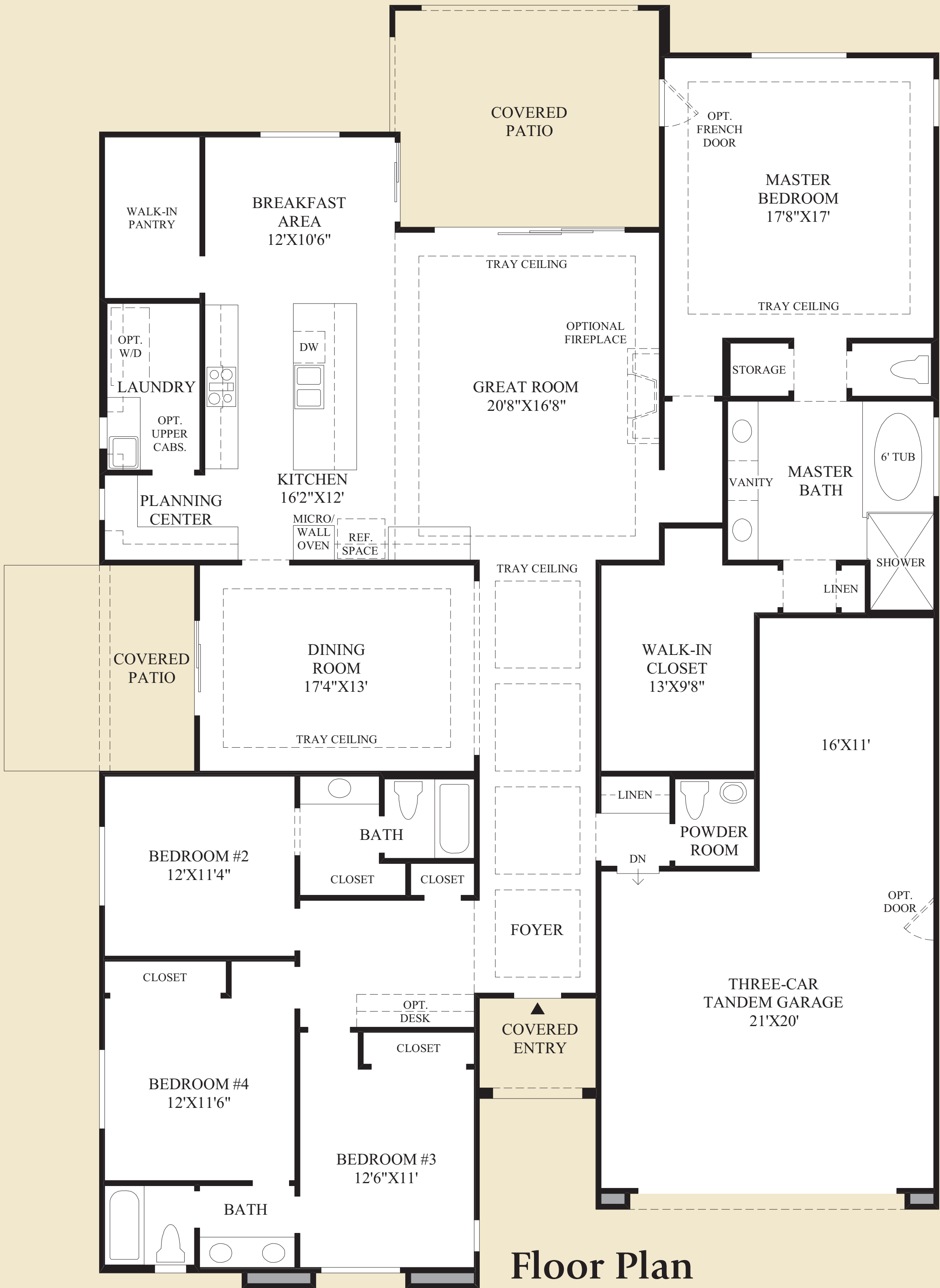
THE TRAPANI

DRAFT

Toll Brothers
America's Luxury Home Builder®



Craftsman



THE TRAPANI HIGHLIGHTS

- Admirable covered entry leads into a radiant foyer and exquisite dining room with a sliding door out to covered patio.
- Remarkable great room is highlighted by a splendid 12' sliding glass door, with views of the sizable rear covered patio.
- Dynamic kitchen with a large breakfast island, planning center, and walk-in pantry is adjacent to a well-lit breakfast area.
- Majestic master bedroom is spacious and features a sensational master bath which includes a 6' soaking tub, attractive shower, dual-sink vanity, as well as a grand walk-in closet.

Floor Plan