



Tuscan

THE VALENCIA | Exterior Designs



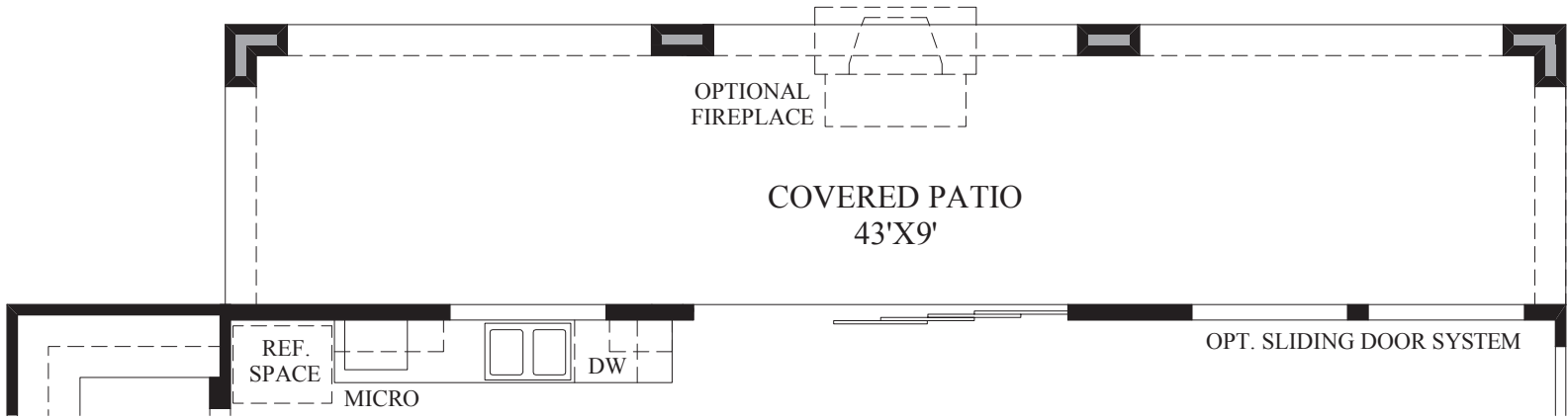
Spanish Colonial

THE VALENCIA

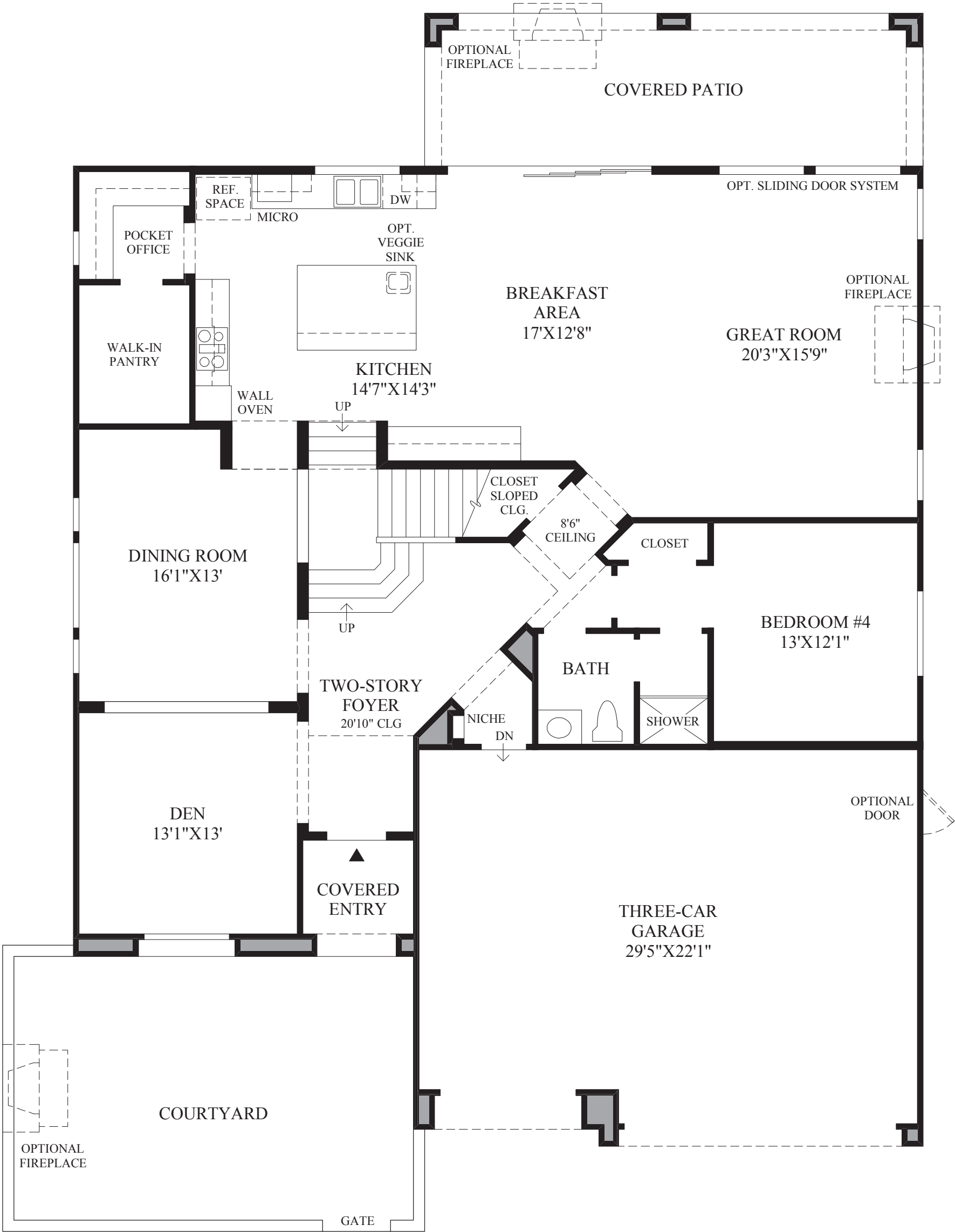
Toll Brothers
AMERICA'S LUXURY HOME BUILDER®



Italianate



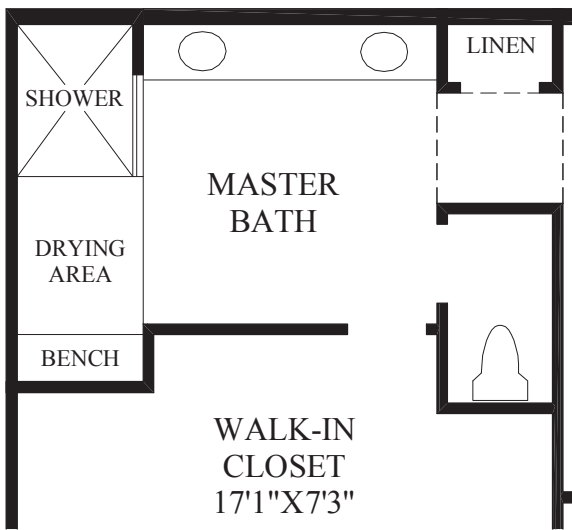
SHOWN WITH OPTIONAL EXPANDED COVERED PATIO



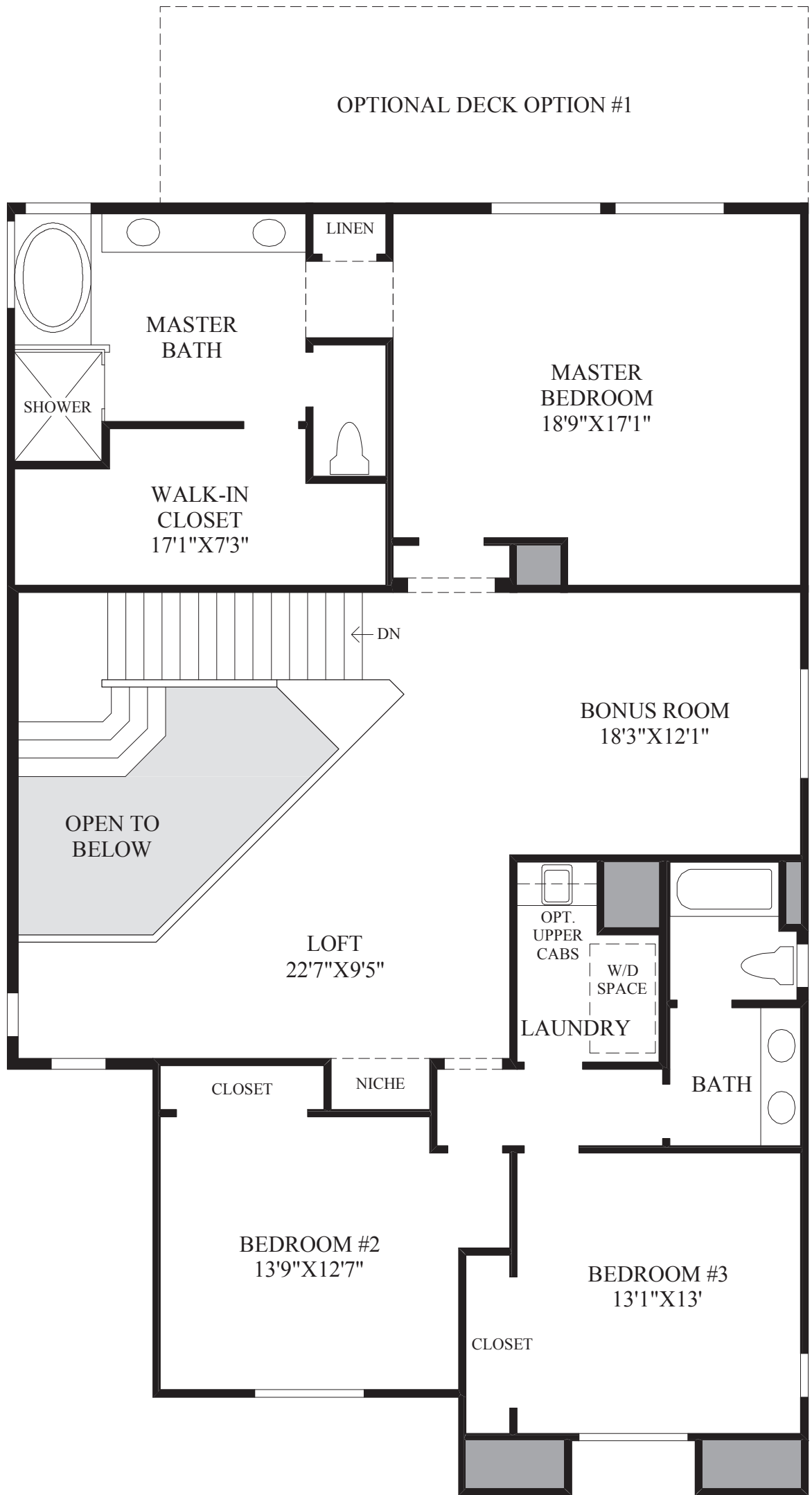
First Floor
TUSCAN EXTERIOR DESIGN SHOWN

THE VALENCIA HIGHLIGHTS

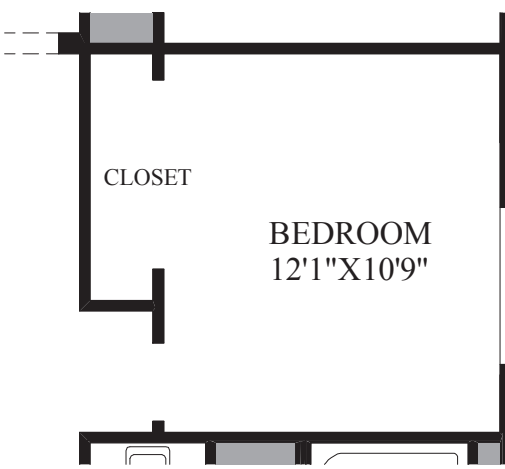
- An inviting courtyard entry and a two-story foyer lead to an exquisite den and a dramatic dining room, which features an expansive array of windows.
- The spacious great room includes large windows that look out to the grand rear covered patio.
- The stylish kitchen overlooks the breakfast area and the great room while incorporating a large central island, a pocket office, and an impressive walk-in pantry.
- This stunning master bedroom is located upstairs and includes a king-sized walk-in closet, large windows, and a master bath which offers a dual-sink vanity, a linen closet, a soaking tub, and a large glass-enclosed shower.
- Additional highlights include 10' ceilings throughout the first floor, 9' ceilings on the second floor, an appealing loft, a desirable bonus room, and a conveniently located laundry.



SHOWN WITH OPTIONAL
ULTRA SHOWER



Second Floor



SHOWN WITH OPTIONAL
BEDROOM IN LIEU OF
BONUS ROOM