

THE VENABLE | Exterior Designs

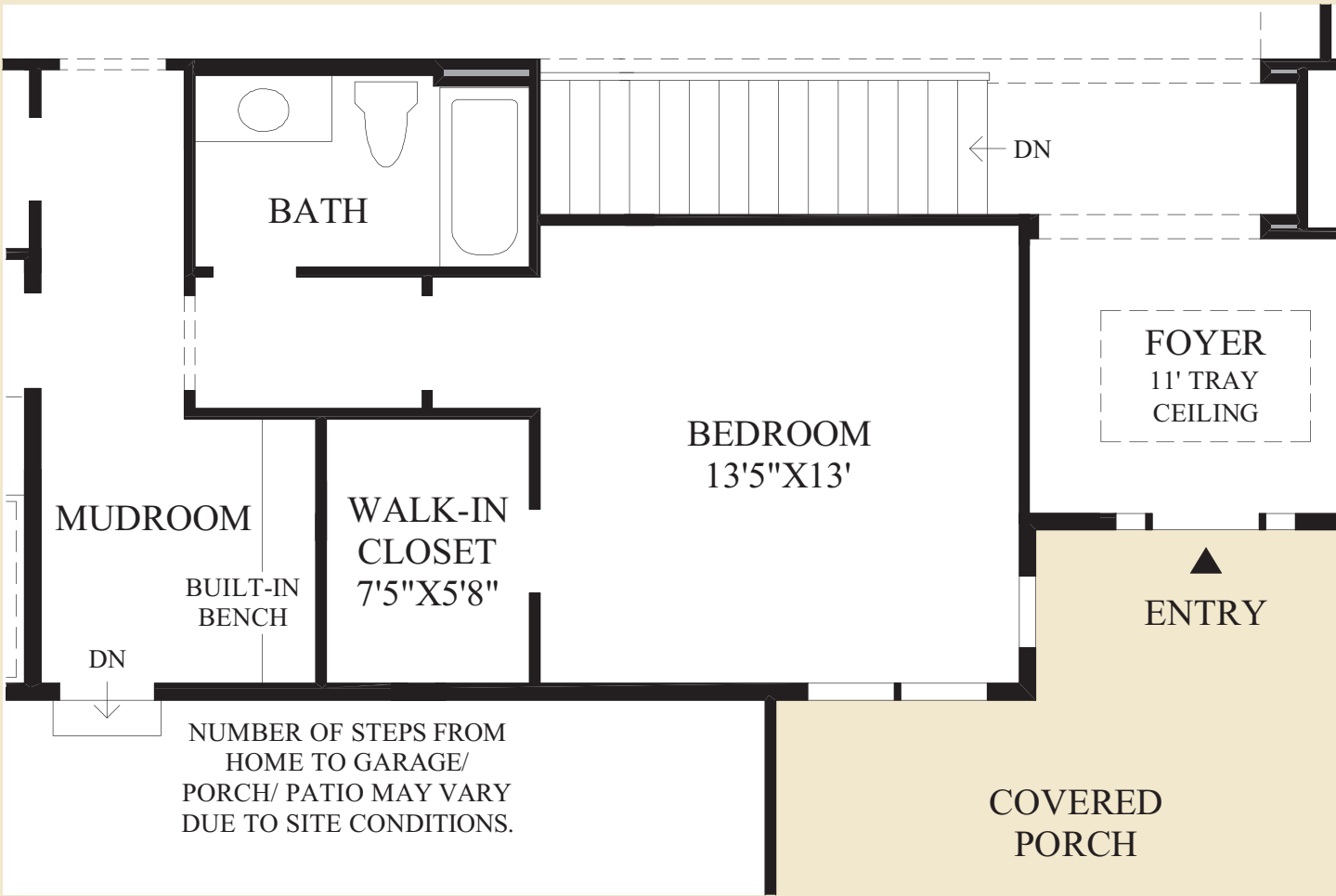
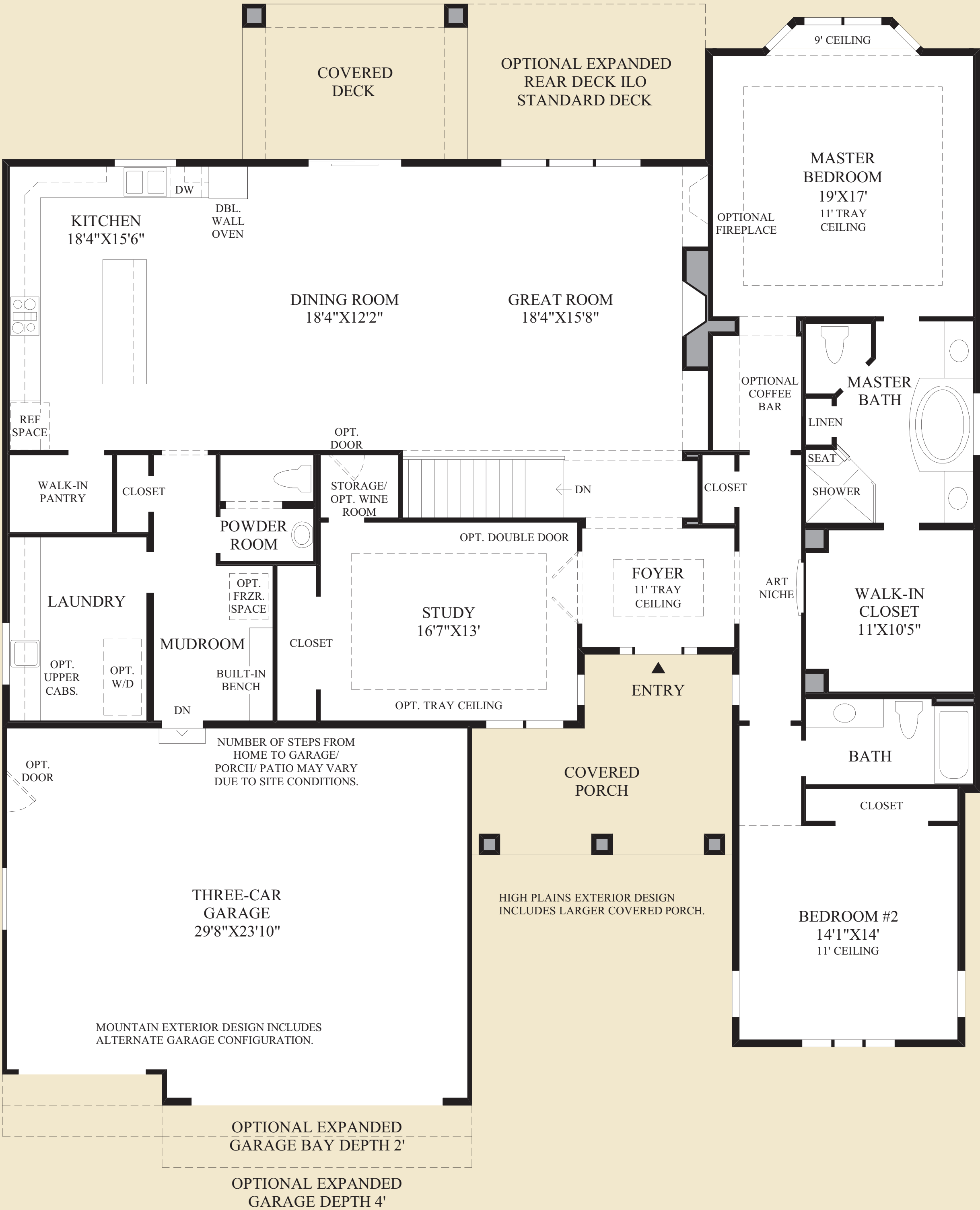


THE VENABLE



boulder collection

anthem[®] ranch
by Toll Brothers
ACTIVE LIVING[®]



SHOWN WITH OPTIONAL FIRST FLOOR BEDROOM ILO STUDY

THE VENABLE HIGHLIGHTS

- The splendid covered entry porch leads to an elegant foyer which is flanked by a study that is ideal for home office use.
- This dramatic great room features a radiant fireplace that is open to the grand dining room and the appealing kitchen, making it a great space for entertaining guests.
- The superb kitchen features a center island with a breakfast bar, a large walk-in pantry, and convenient access to the rear covered deck.
- The remarkable master bedroom features a luxurious master bath that includes dual vanities, a dramatic soaking tub with a curved deck, a shower with a seat, and a spacious walk-in closet.
- Additional features include an impressive laundry room and a conveniently located mudroom with garage access.



Floor Plan
FARMHOUSE EXTERIOR DESIGN SHOWN