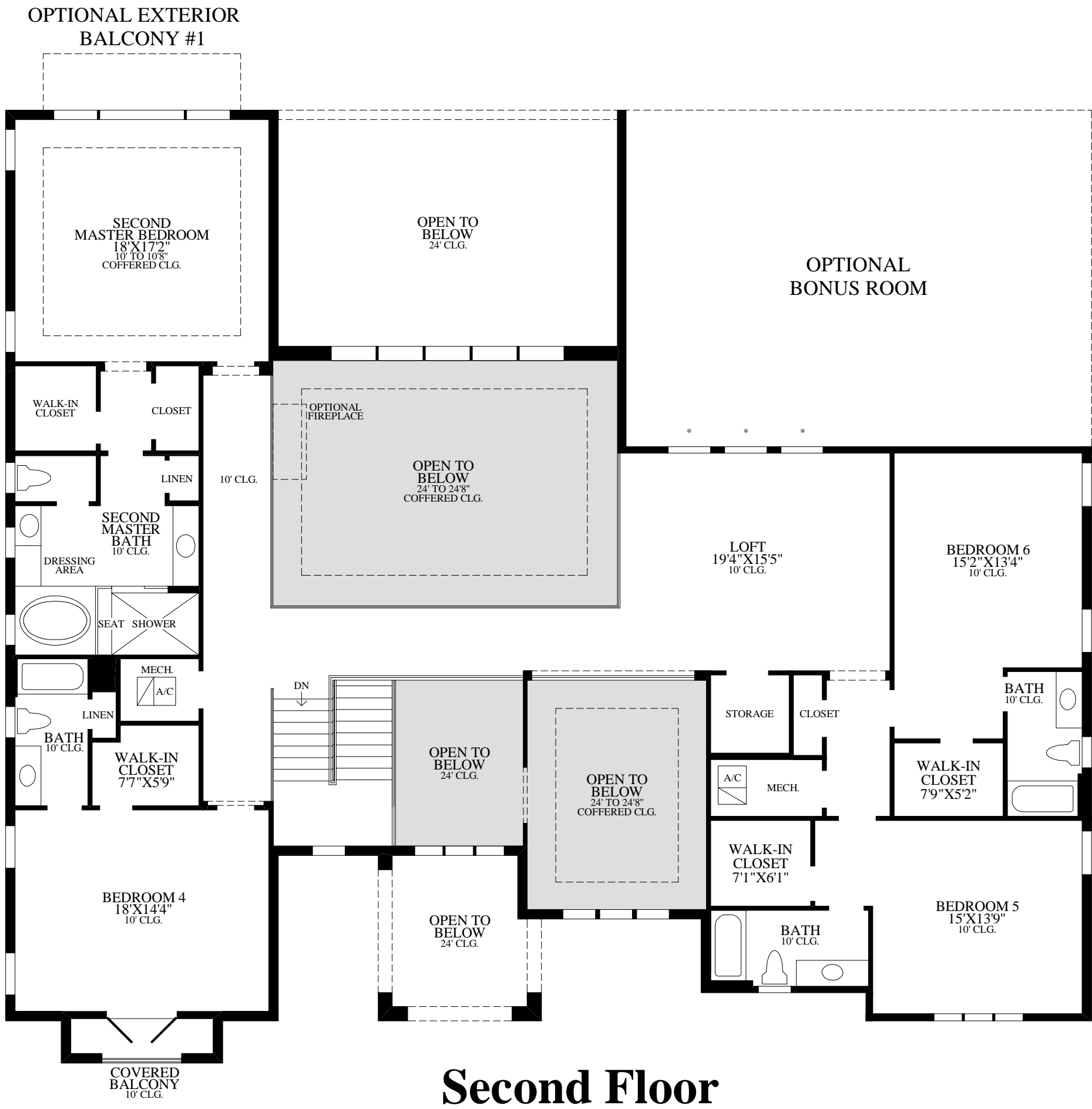
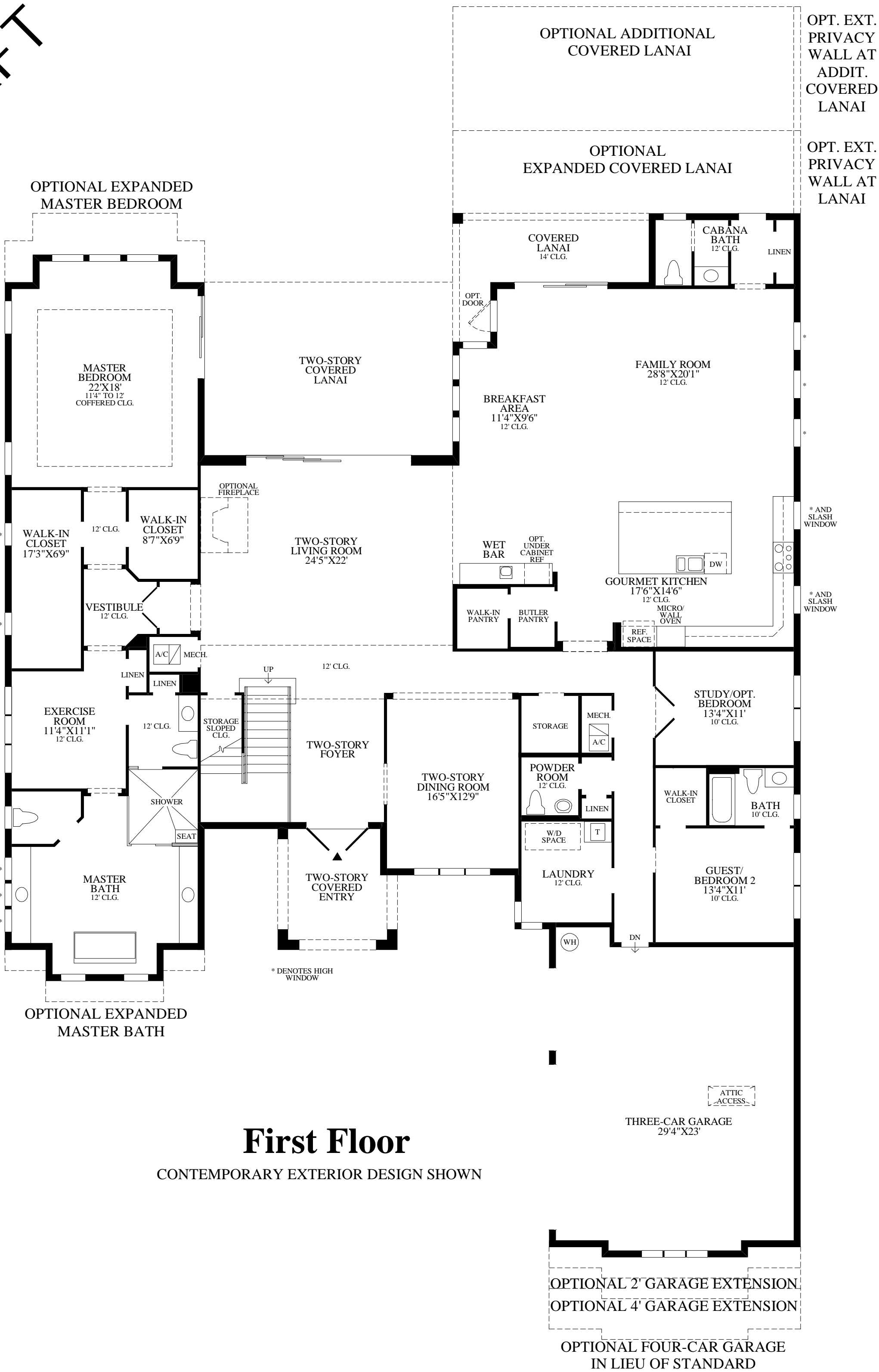


DRAFT



DRAFT

THE VILLA DIVINA HIGHLIGHTS

- Covered entry leads to a two-story foyer and a spacious two-story living room with spectacular views of the rear landscape.
- The expansive gourmet kitchen boasts a large center island and overlooks a sunlit breakfast area adjacent to the expansive family room and wet bar.
- The luxurious master bedroom includes a coffered ceiling, a magnificent window wall, two walk-in closets, an exercise area, and a luxurious master bathroom.
- An open loft overlooks the living areas below and leads to the second full master bedroom and secondary bedrooms, each with a full bathroom.

First Floor	4405 sq. ft.
Second Floor	2565 sq. ft.
Air Conditioned Living Area	6970 sq. ft.
Covered Lanai	550 sq. ft.
Covered Entry	129 sq. ft.