

Palm Beach



THE VILLA LAGO | Exterior Designs

Mediterranean



THE VILLA LAGO

THE VILLA LAGO | Interior



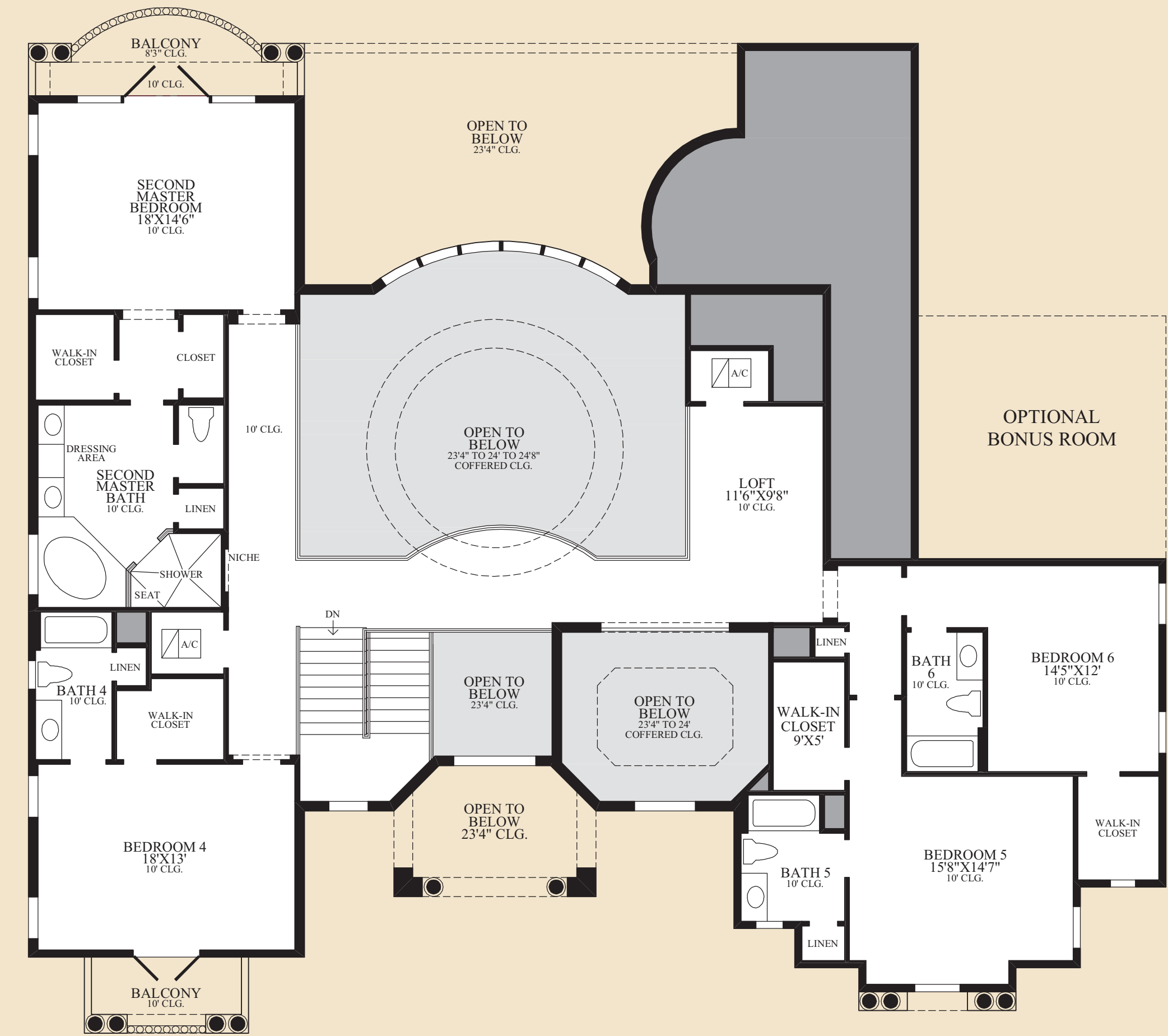
Two-Story Living Room

Chateau



Versailles





THE VILLA LAGO HIGHLIGHTS

- A handsome covered entry opens to a two-story foyer that leads to a spacious two-story living room with a coffered ceiling offering spectacular views of the rear landscape though a soaring picture window. A charming columned entry frames the nearby formal dining room which overlooks the front courtyard.
 - The expansive gourmet kitchen boasts a convenient center island and separate pantry that overlooks a sunlit breakfast area and an expansive family room with access to the cabana bath and covered lanai. A separate butler's pantry is also included in the gourmet kitchen.
 - The luxurious master bedroom suite includes a coffered ceiling and a dramatic bay window, two walk-in closets, an exercise area, and a master bath with two private water closets, dual vanity sinks, a dressing area, a Roman tub, and a walk-around shower.
 - Upstairs, an open loft overlooks the living areas below and leads to second full master bedroom and three additional bedrooms, each with a full bath. This majestic home is further enhanced by a first floor guest bedroom, a private study with striking coffered ceilings and double doors, a conveniently located powder room, a separate laundry room, and a three-car garage.
- | | |
|-----------------------------|--------------|
| First Floor | 4511 sq. ft. |
| Second Floor | 2343 sq. ft. |
| Air Conditioned Living Area | 6854 sq. ft. |
| Covered Lanai | 560 sq. ft. |
| Covered Entry | 120 sq. ft. |