



THE VILLAMAR

THE VILLAMAR | Exterior Designs



Enzo/Villamar/Sorrento/Dante/Cicero



Spanish Colonial

Toll Brothers
America's Luxury Home Builder®

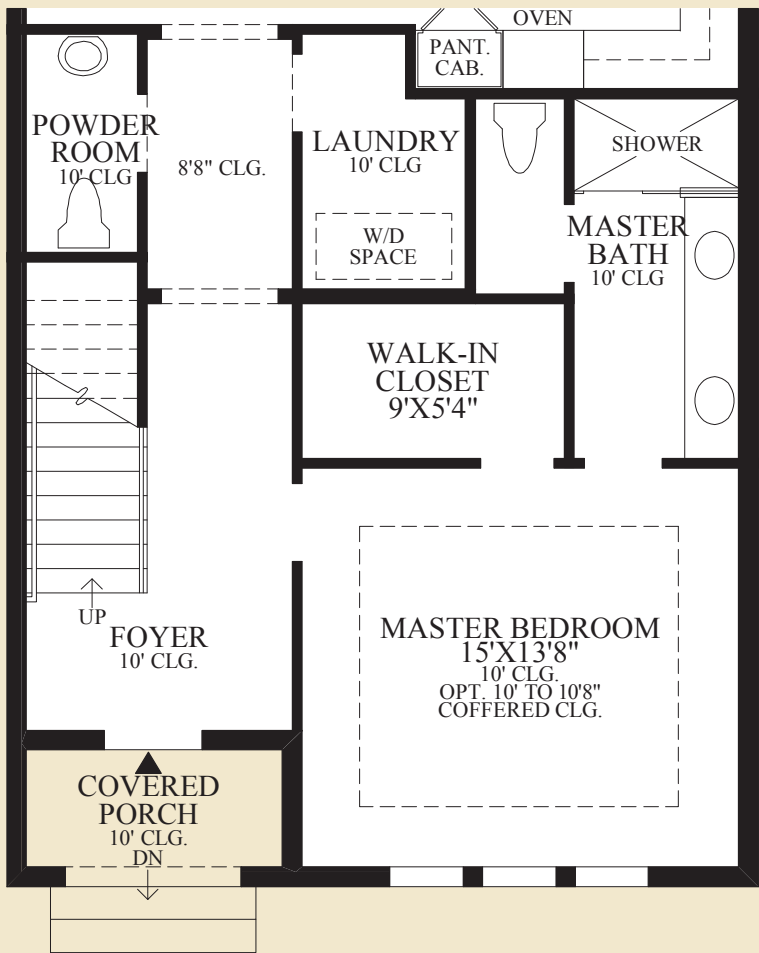


This insert was produced using recycled products.

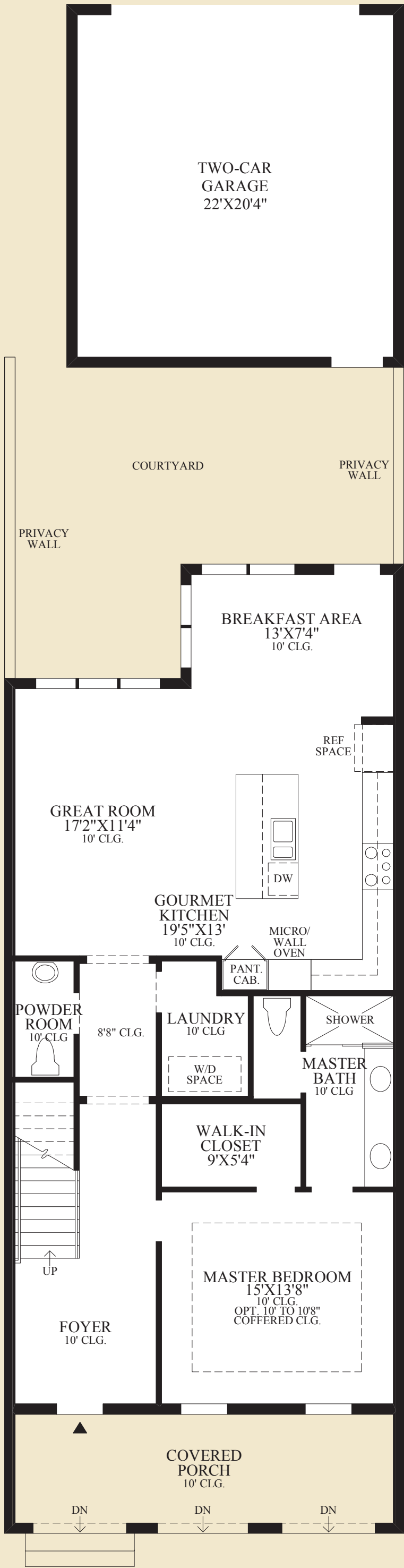
THE VILLAMAR HIGHLIGHTS

- The open layout features a well-appointed kitchen with a large center island and an adjacent great room and breakfast area.
- The master bedroom features a walk-in closet and luxurious master bath. The master bath includes a dual sink-vanity, spacious shower with seat, and private water closet.
- This home also features a spacious loft and additional bedrooms and bath on the second floor.

First Floor	1286 sq. ft.
Second Floor	834 sq. ft.
<hr/>	
Air Conditioned Living Area	2120 sq. ft.
Covered Porch	192 sq. ft.

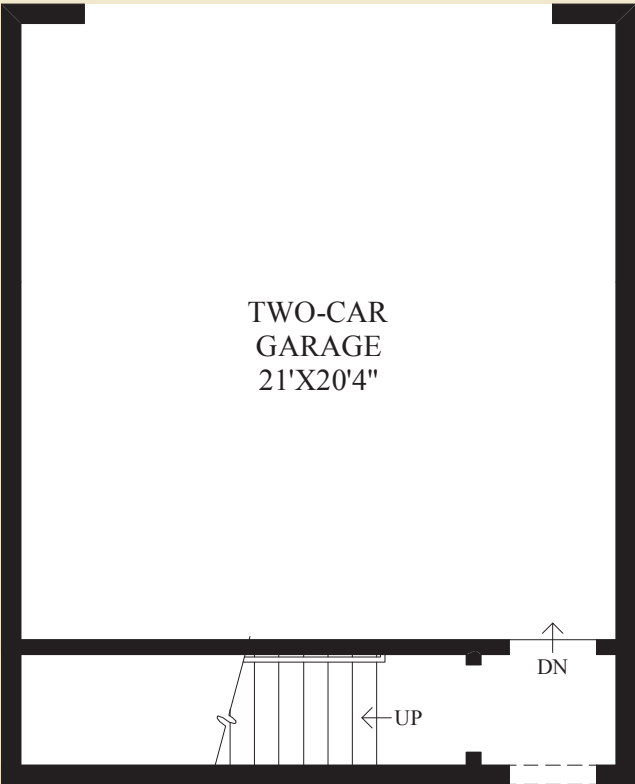


ITALIANATE EXTERIOR DESIGN INCLUDES AN ALTERNATE LAYOUT.

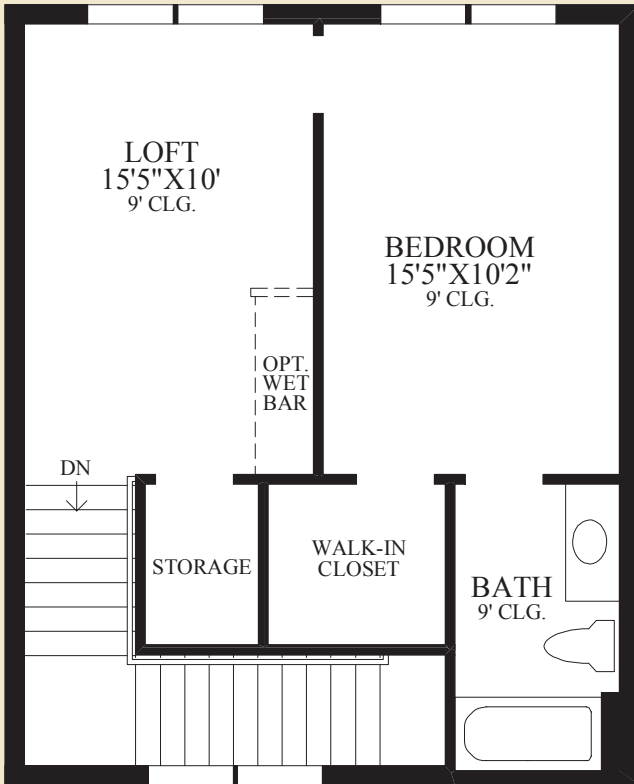


First Floor

SPANISH COLONIAL EXTERIOR DESIGN SHOWN



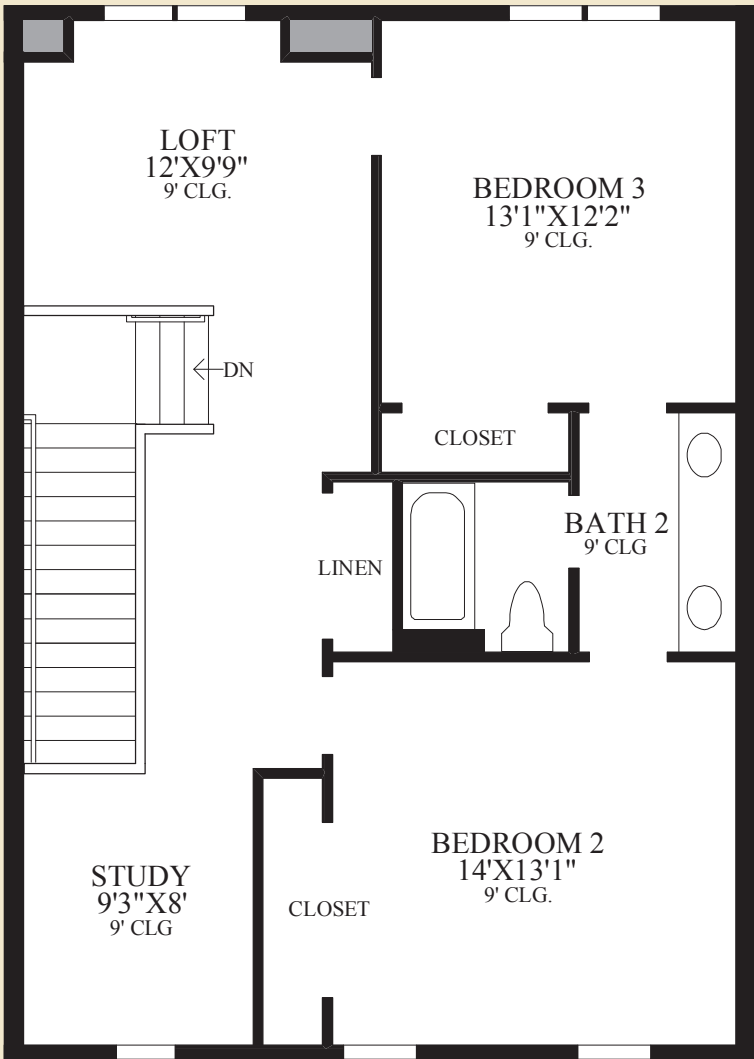
SHOWN WITH STAIRS TO OPTIONAL FINISHED LOFT WITH BEDROOM AND BATHROOM



NOTE: THIS OPTION FEATURES AN ADDITIONAL 560 SQ. FT. OF AIR CONDITIONED LIVING AREA.

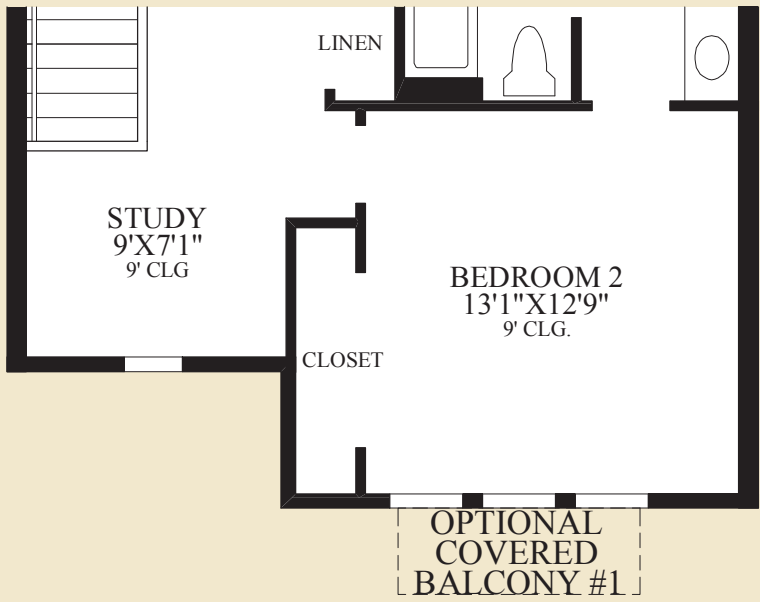
NOTE: OPTION 021 BONUS ROOM AND 263024 FINISHED LOFT CANNOT BE PURCHASED IN CONJUNCTION WITH THIS OPTION.

SHOWN WITH OPTIONAL FINISHED LOFT WITH BEDROOM AND BATHROOM



Second Floor

SPANISH COLONIAL EXTERIOR DESIGN SHOWN



ITALIANATE EXTERIOR DESIGN INCLUDES AN ALTERNATE LAYOUT AT FRONT.