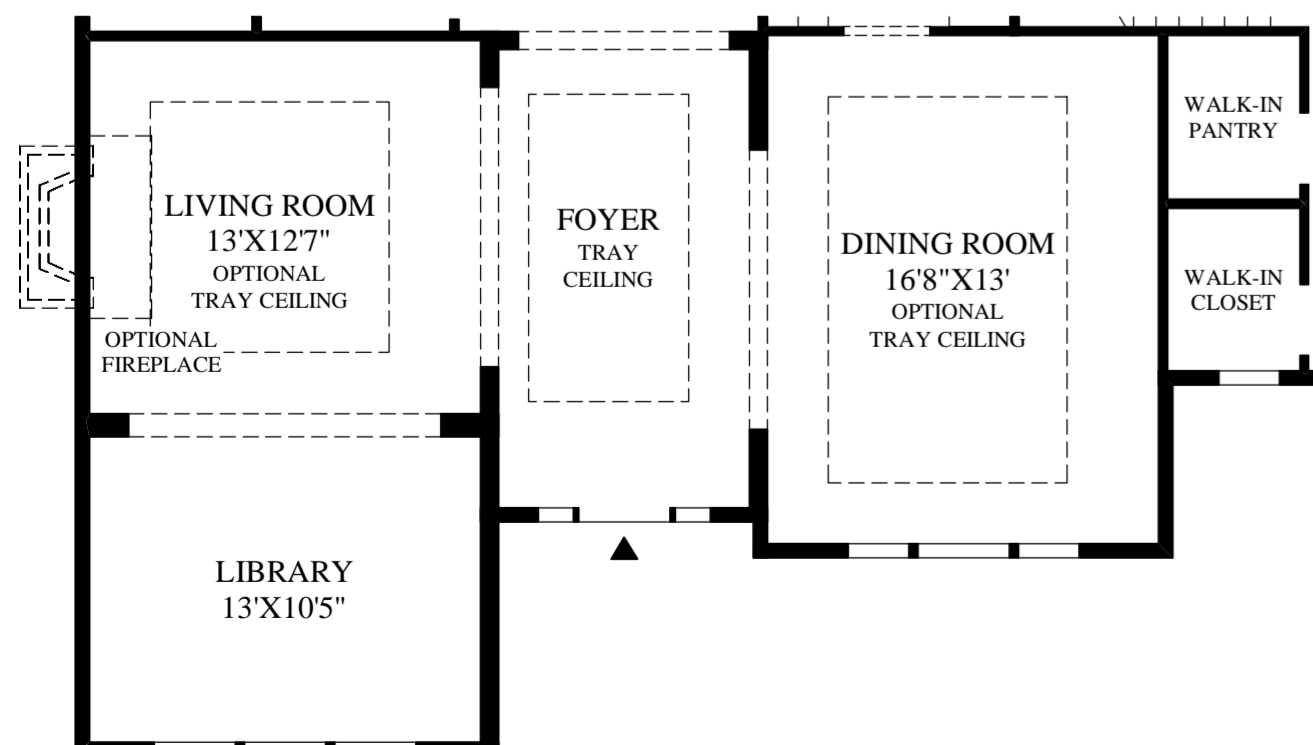


FEDERAL AND LEXINGTON EXTERIOR DESIGNS INCLUDE A LARGER LIVING ROOM.

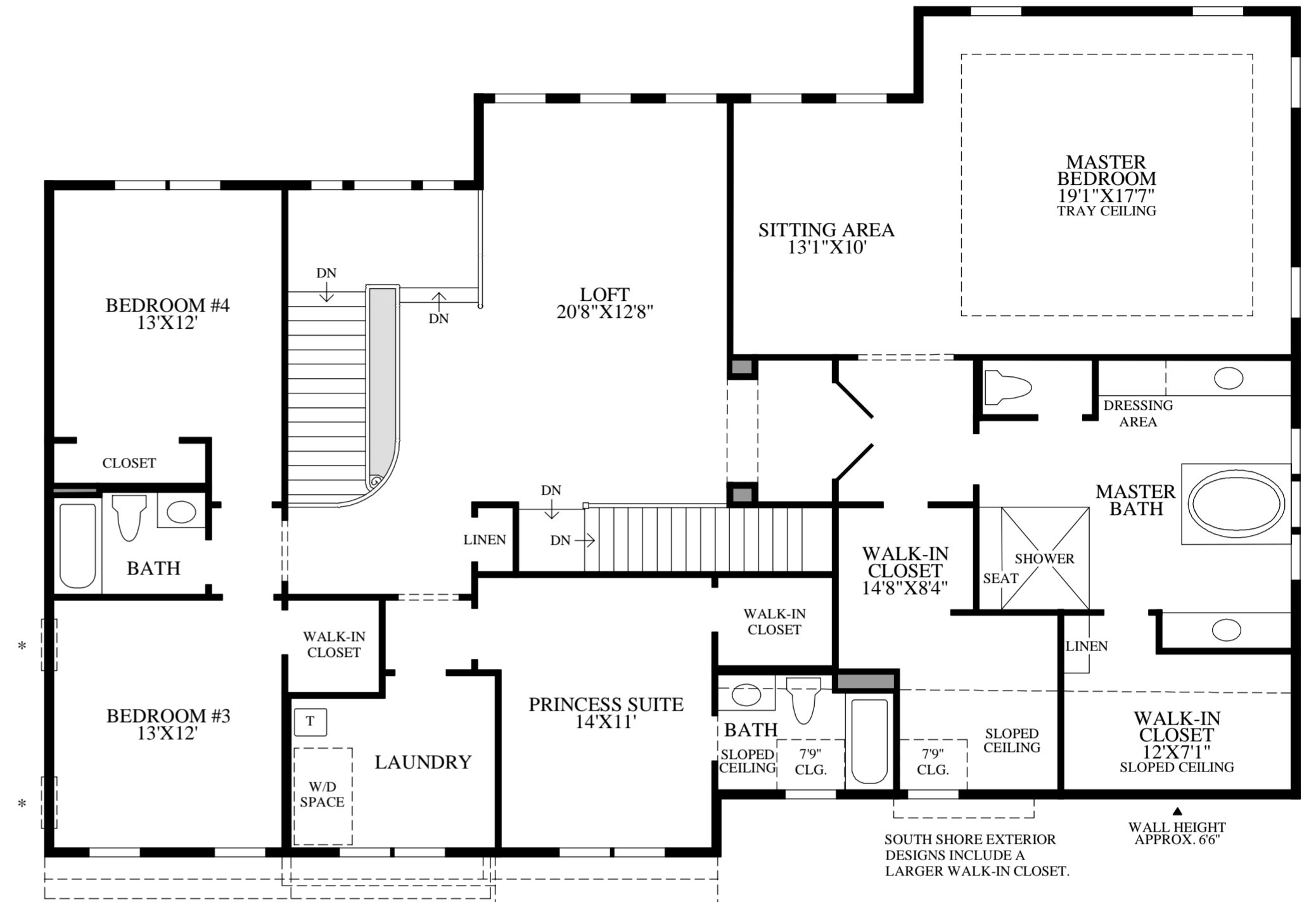
FAIRVIEW AND FEDERAL EXTERIOR DESIGNS INCLUDE A LARGER FOYER.

FAIRVIEW AND LEXINGTON EXTERIOR DESIGNS INCLUDE A LARGER DINING ROOM.

FAIRVIEW, FEDERAL, AND LEXINGTON EXTERIOR DESIGNS SHOWN.



SOUTH SHORE EXTERIOR DESIGN SHOWN.



FEDERAL, LEXINGTON, AND TRADITIONAL EXTERIOR DESIGNS INCLUDE A LARGER BEDROOM #3.

FAIRVIEW, FEDERAL, SOUTH SHORE, AND TRADITIONAL EXTERIOR DESIGNS INCLUDE A LARGER LAUNDRY.

FAIRVIEW, LEXINGTON, AND SOUTH SHORE EXTERIOR DESIGNS INCLUDE A LARGER PRINCESS SUITE.

*NOTE: BEDROOM #3 WINDOW LOCATION WITH SOUTH SHORE EXTERIOR DESIGN.

Second Floor

THE WINDERMERE HIGHLIGHTS

- The spacious foyer is flanked by the formal living room and dining room and has a view of the elegant turned stair.
- The gourmet kitchen features a large center island, an adjacent sunlit breakfast area, and offers an open view of the spacious family room with an included fireplace.
- The master bedroom suite features a sitting area, two large walk-in closets, and a master bath with a Roman tub, a shower with a seat, dual vanities, and a private toilet area.
- The second floor of this home features a bedroom with private bath, two additional bedrooms that share a hall bath, a spacious loft, and a conveniently located laundry room.
- Additional features of this home include a private study, a butler pantry, and a separate family entrance.
- This home features ten-foot ceilings throughout the first floor and nine-foot ceilings throughout the second floor.